



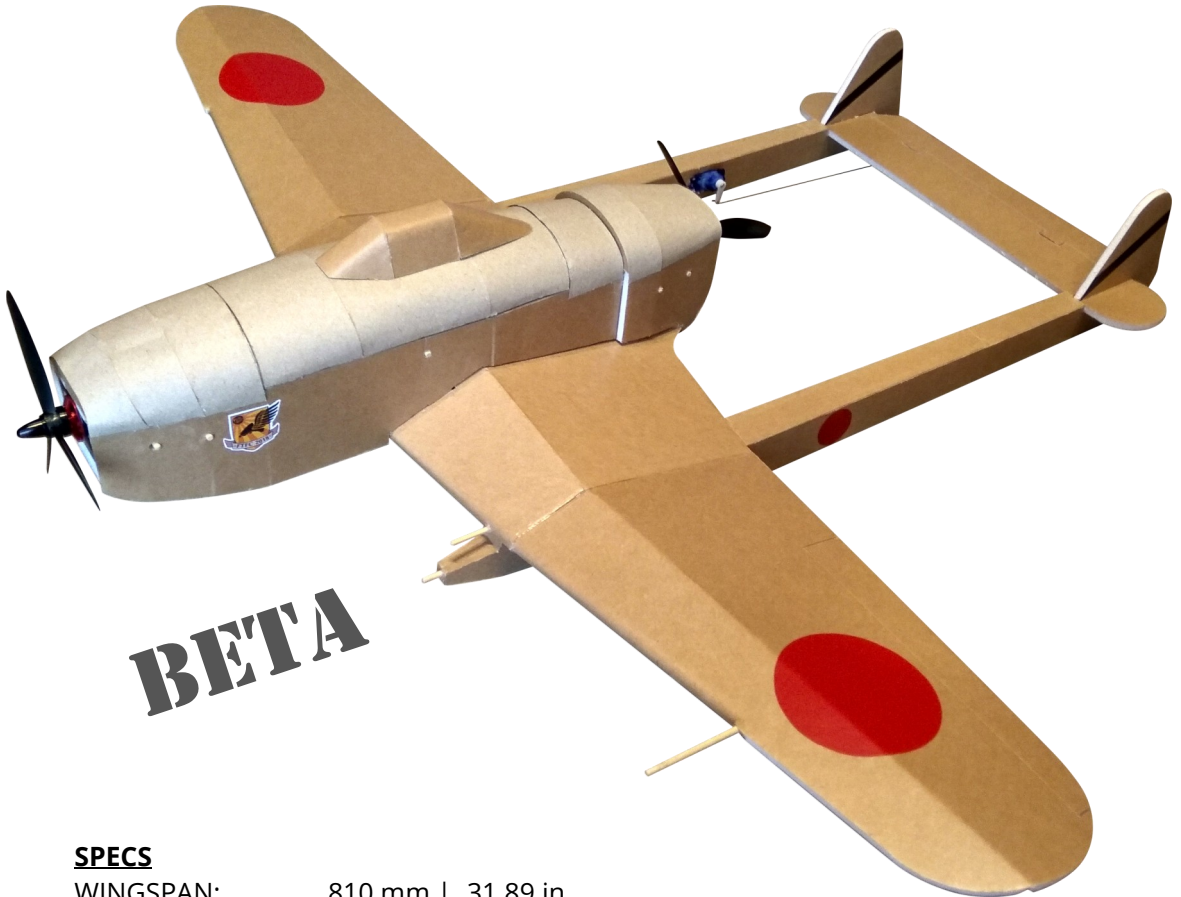
airc-pirates.com

AP Tachikawa Ki-94-I

... THE FLYING SUMO FIGHTER

Version 0.2 (2018-01-30)

Design & Drawing by: Tony Roehling



BETA

SPECS

WINGSPAN:	810 mm 31.89 in
CG:	60 mm 2.36 in
LENGTH:	680 mm 26.77 in
DRY WEIGHT:	300 g 10.58 oz
ALL UP WEIGHT:	375 g 13.23 oz (with 3s 1000 mAh)
EXPO:	30 %
CHANNELS:	3 (THR AIL ELV)



ELECTRONICS

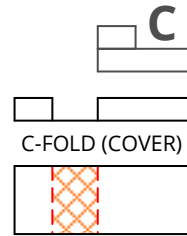
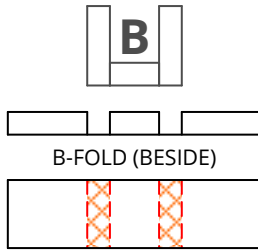
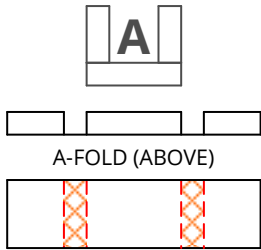
MOTOR:	2300 kv (1806 or 2204)
PROPELLER:	2 x 5x5 or 6x4 (CW & CCW)
ESC:	2 x 12 A
SERVOS:	3 x 5 g
BATTERY:	1000 mAh 3s



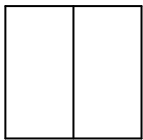
DRAWING KEY

... is based on the Flite Test Drawing Key by Dan Sponholz

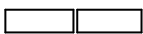
FOLD TYPES



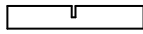
LINE TYPE/COLOR



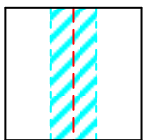
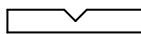
CUT



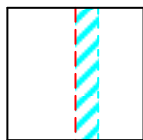
50% SCORE



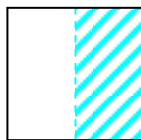
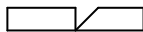
CREASE



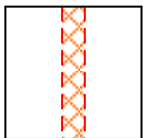
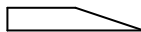
45° DOUBLE BEVEL



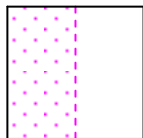
45° SINGLE BEVEL



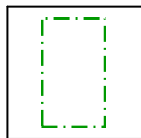
EDGE BEVEL



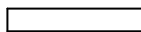
CAVITY



REMOVE PAPER



REFERENCE/
OPTIONAL



SYMBOLS

PART NUMBER



QUANTITY



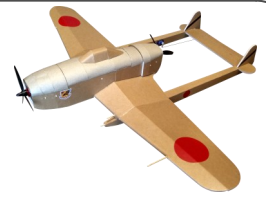
DOWEL HOLE



CENTER OF GRAVITY (CG)

BETA

AP Tachikawa Ki-94-I PARTS LIST 1/2



Version 0.2 (2018-01-30)

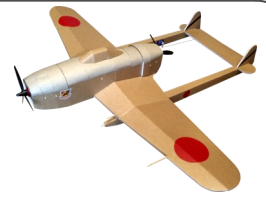
PART NR.	DESCRIPTION	QUANTITY	MATERIAL	SHEET
1	MIDDLE WING	1	FOAM BOARD	1
2	MIDDLE WING SPAR	1	FOAM BOARD	1
3	OUTER WING SPAR	2	FOAM BOARD	1
4	RIGHT WING	1	FOAM BOARD	1
5	LEFT WING	1	FOAM BOARD	1
6	HORIZONTAL STABILIZER	1	FOAM BOARD	1
7	VERTICAL STABILIZER	2	FOAM BOARD	1
8	RIGHT TAIL BOOM	1	FOAM BOARD	2
9	LEFT TAIL BOOM	1	FOAM BOARD	2
10	RIGHT TAIL BOOM SHEETING	1	FOAM BOARD	2
11	LEFT TAIL BOOM SHEETING	1	FOAM BOARD	2
12	FUSELAGE	1	FOAM BOARD	2
13	REAR RIGHT SIDEWALL	1	FOAM BOARD	2
14	REAR LEFT SIDEWALL	1	FOAM BOARD	2
15	FRONT POWER POD SPACER	2	FOAM BOARD	2
16	REAR POWER POD SPACER	2	FOAM BOARD	2
17	LOWER FRONT SHEETING	1	FOAM BOARD	2
18	LOWER REAR SHEETING	1	FOAM BOARD	2
19	FORMER A	1	FOAM BOARD	2
20	FORMER B	1	FOAM BOARD	2
21	FORMER C	1	FOAM BOARD	2
22	FORMER D	1	FOAM BOARD	2
23	FORMER E	1	FOAM BOARD	2
24	FORMER F	1	FOAM BOARD	2
25	ELECTRONICS BAY SHEETING	1	FOAM BOARD	2
26	FORMER G	1	FOAM BOARD	2
27	FORMER H	1	FOAM BOARD	2
28	ELECTRONICS BAY PIN	2	FOAM BOARD	2
29	FRONT TURTLE DECK	1	POSTER BOARD	3
30	ELECTRONICS BAY TURTLE DECK	1	POSTER BOARD	3
31	MIDDLE TURTLE DECK	1	POSTER BOARD	3
32	REAR TURTLE DECK	1	POSTER BOARD	3
33	CANOPY	1	FOAM BOARD	2
34	MINI POWER POD	2	FOAM BOARD	2
35	MINI FIREWALL	2	PLYWOOD max. 5mm	3

Build the Ki-94-I in the order of the part numbers!

BETA

AP Tachikawa Ki-94-I PARTS LIST 2/2

Version 0.2 (2018-01-30)



PART NR.	DESCRIPTION	QUANTITY	MATERIAL	SHEET
36	CONTROL HORN	3	PLASTIC CARD	3
37	CANOPY MOUNT PIN	1	BBQ SKEWER	3
38	POWER POD MOUNT PIN	4	BBQ SKEWER	3
39	LOWER GUNS	2	BBQ SKEWER	3
40	UPPER GUNS	2	BBQ SKEWER	3
41	ANTENNA	1	BBQ SKEWER	3
G1	DIHEDRAL GAUGE	1	FOAM BOARD	1
G2	90° TRIANGLE	1	FOAM BOARD	2
G3	THROW GAUGE	1	FOAM BOARD	2
	OTHER MATERIALS			
	STEEL WIRE (Ø 1mm) FOR THE LINKAGE RODS			
	VELCRO TO MOUNT THE BATTERY, ESC, ...			

Hints:

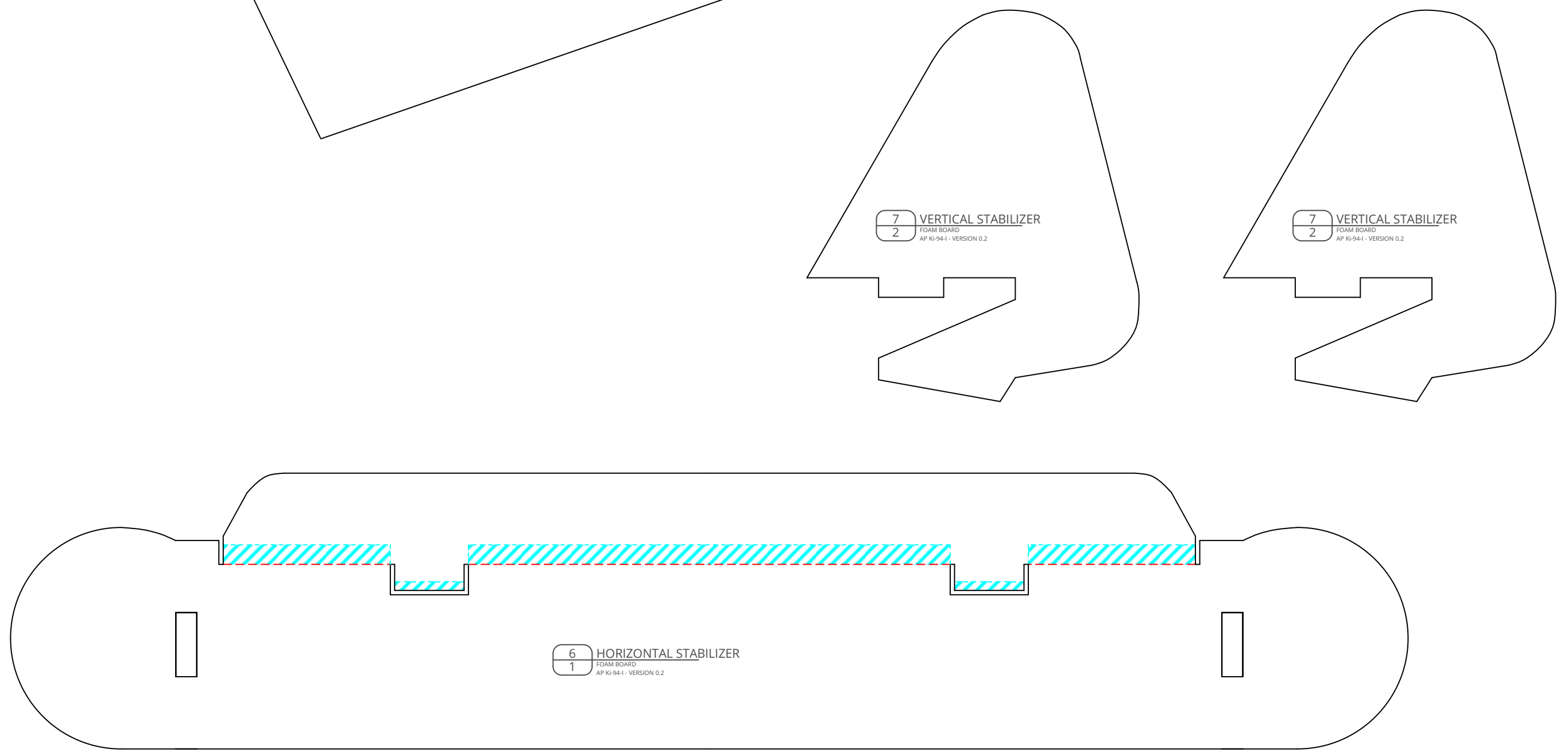
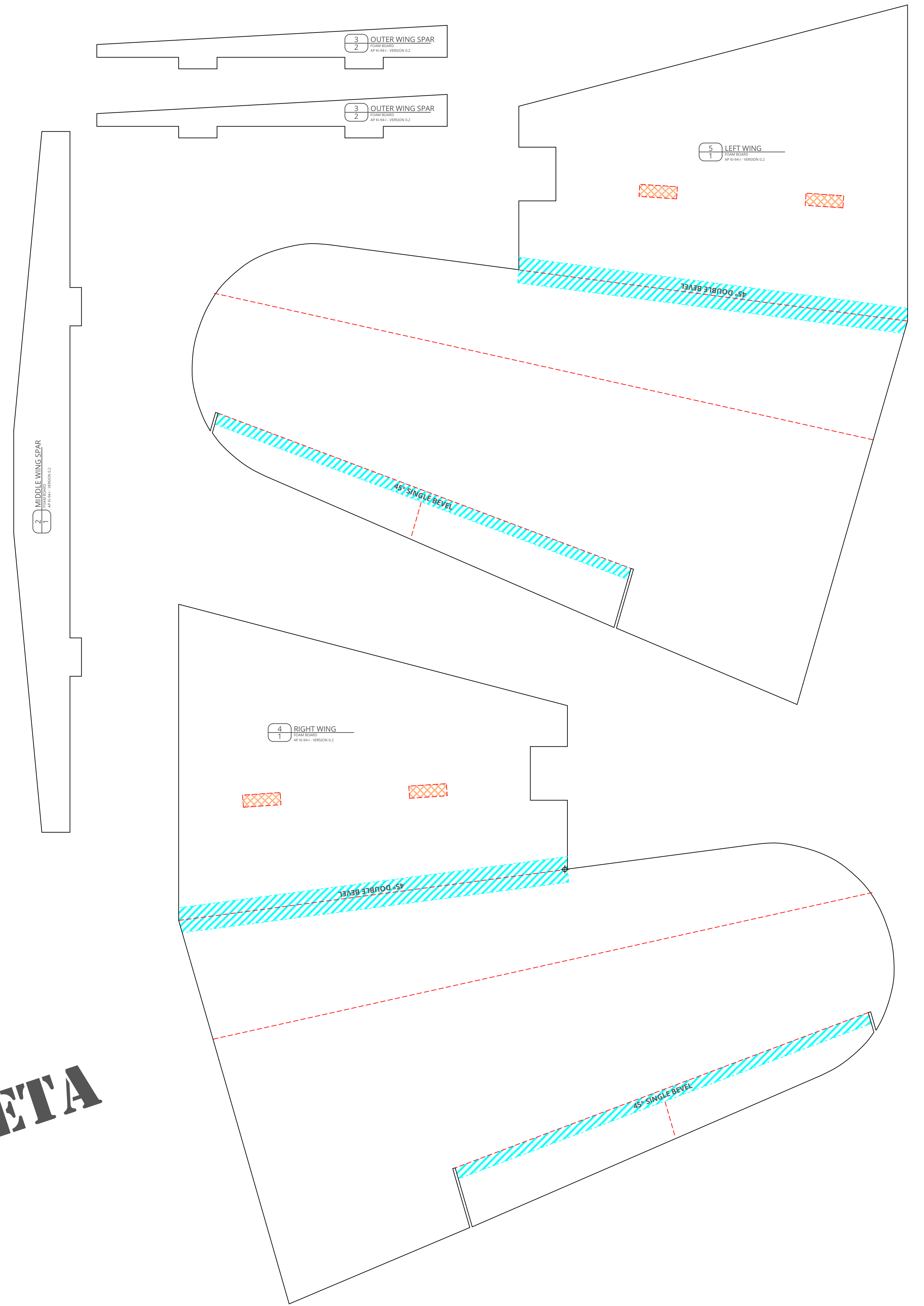
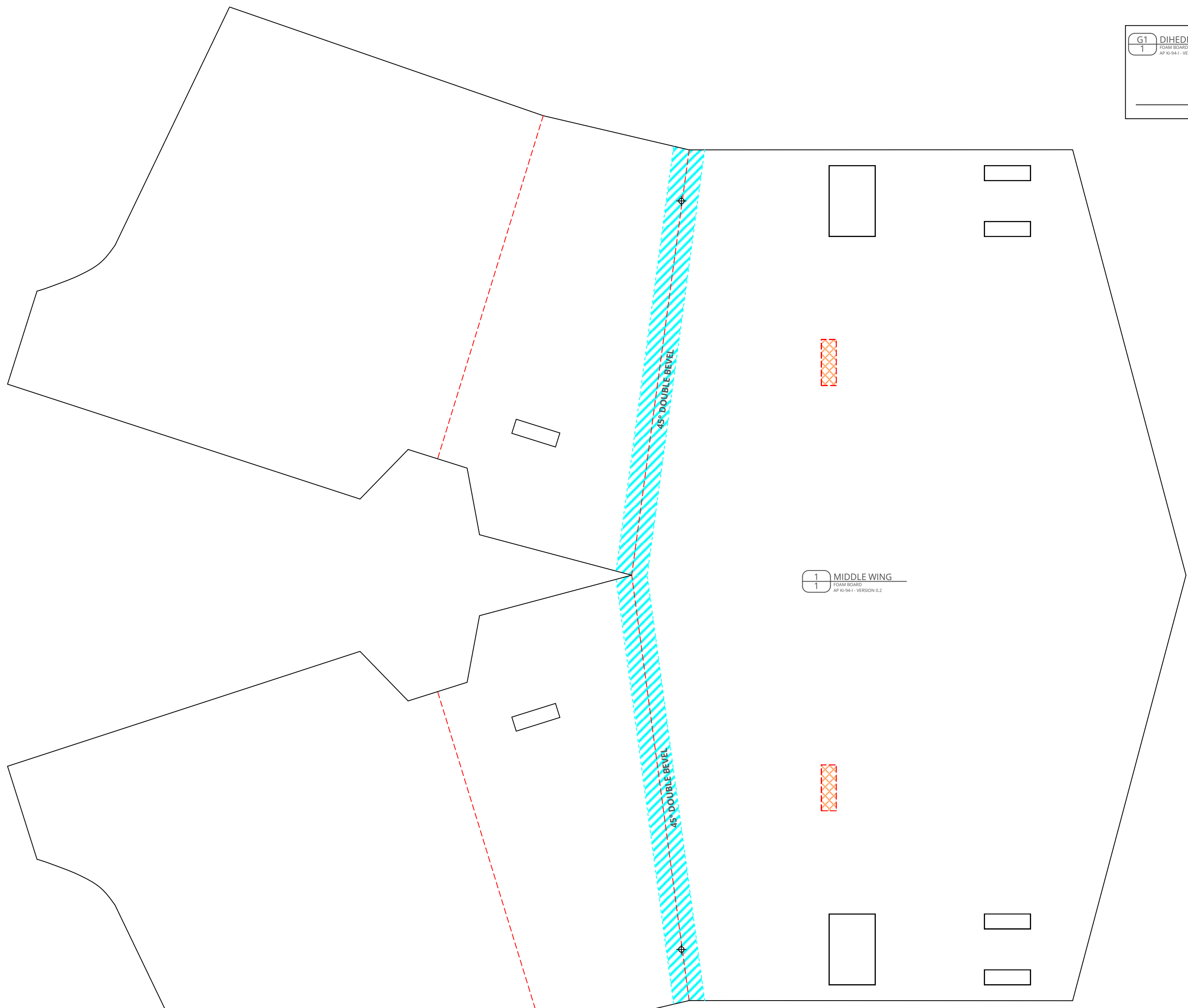
You need counter-rotating propellers (CW & CCW) and a Y-Power-Cable to connect the two ESCs with the battery.

Please do not forget to remove the red cable from the signal cable at one ESC, bend it back and fix it with some tape. You have to do this for every Twin model using two ESCs!

Build the Ki-94-I in the order of the part numbers!

AP Tachikawa Ki-94-I ... THE FLYING SUMO FIGHTER - VERSION 0.2 (2018-01-30)

Design & Drawing by: Tony Roehling

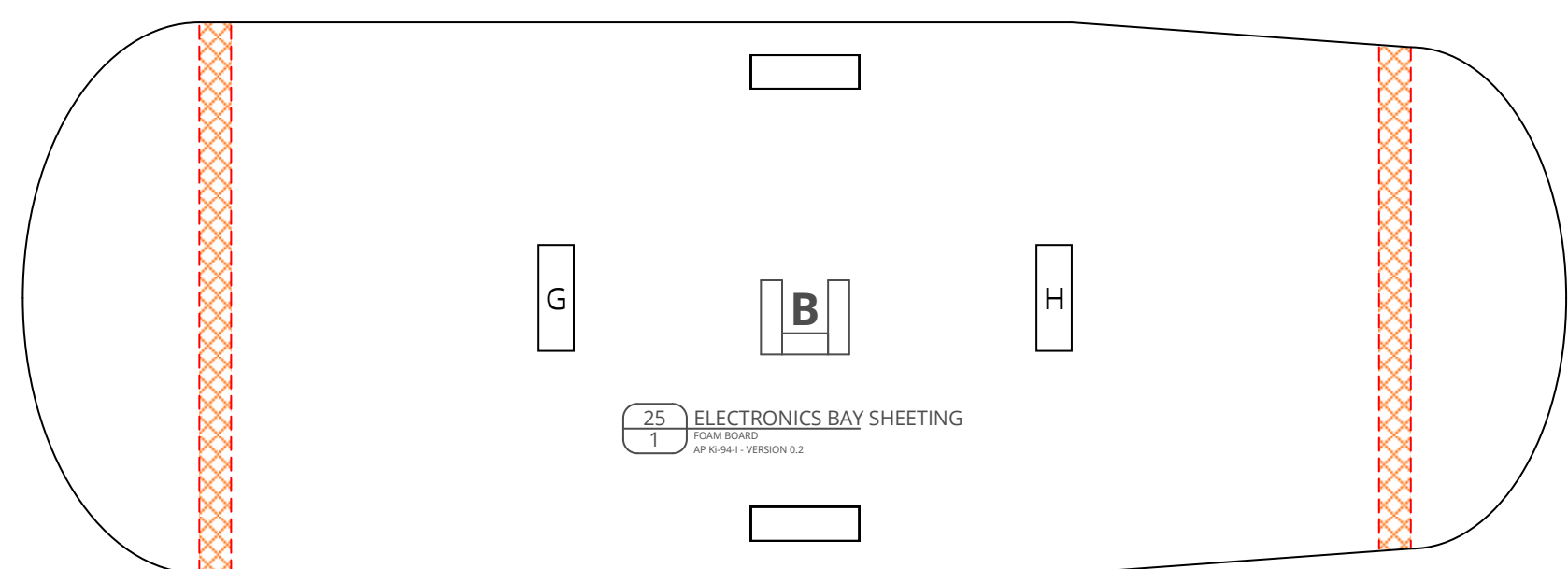
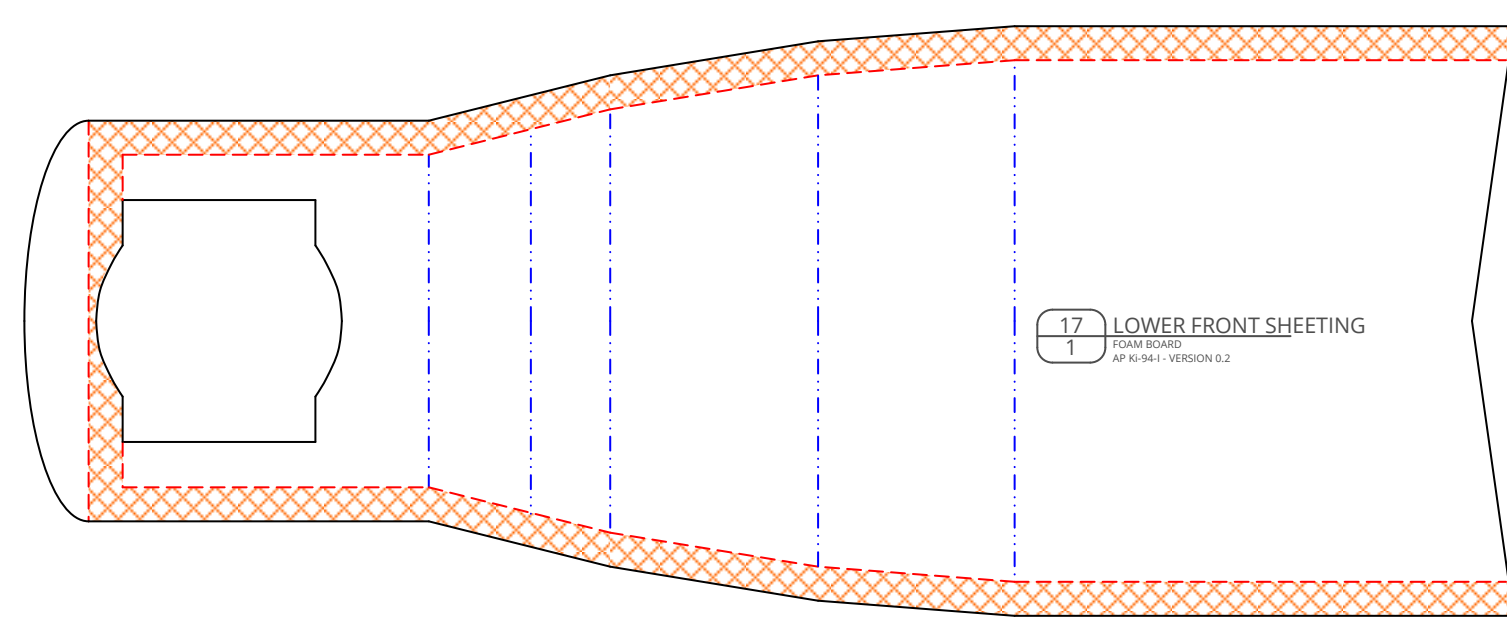
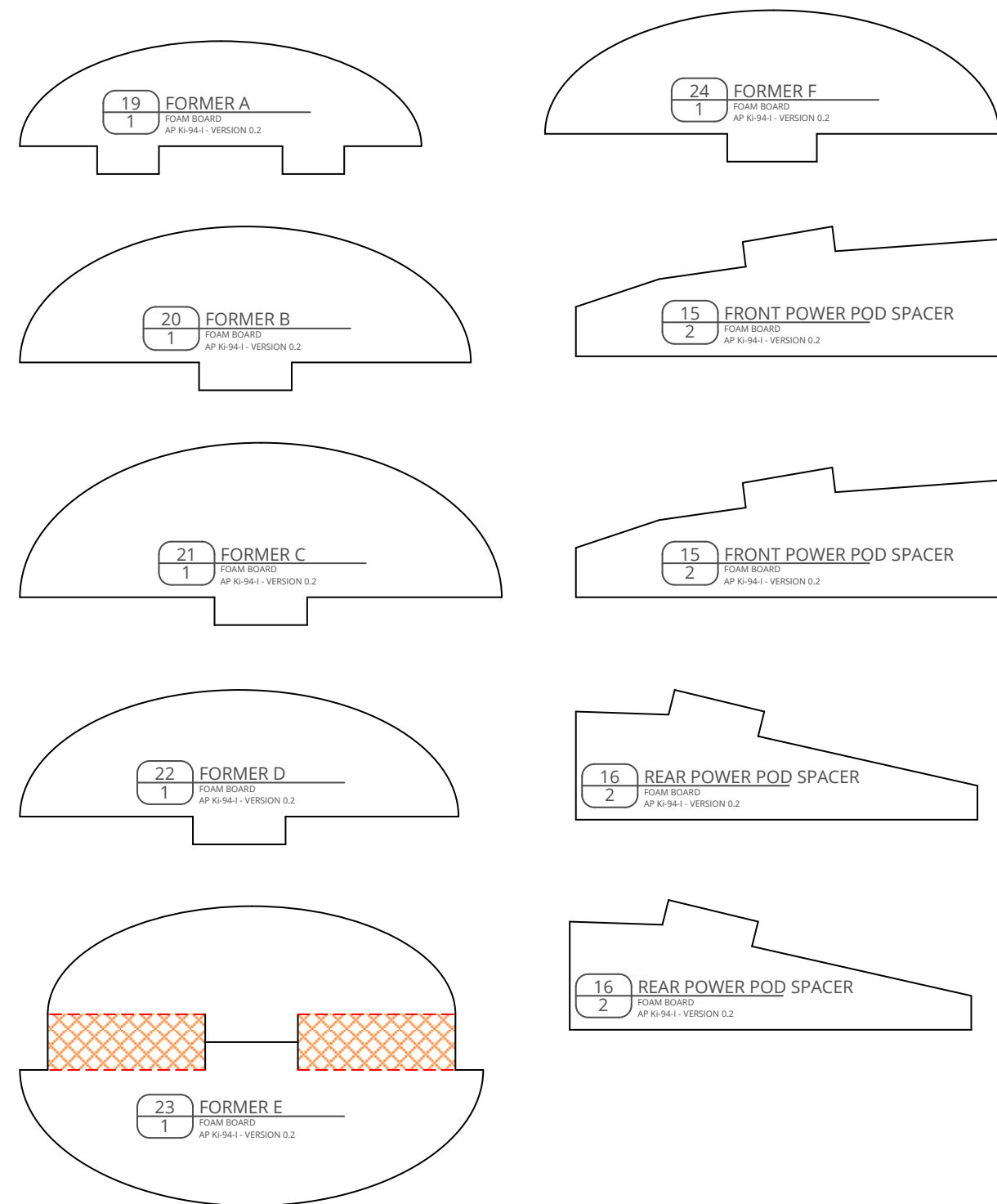
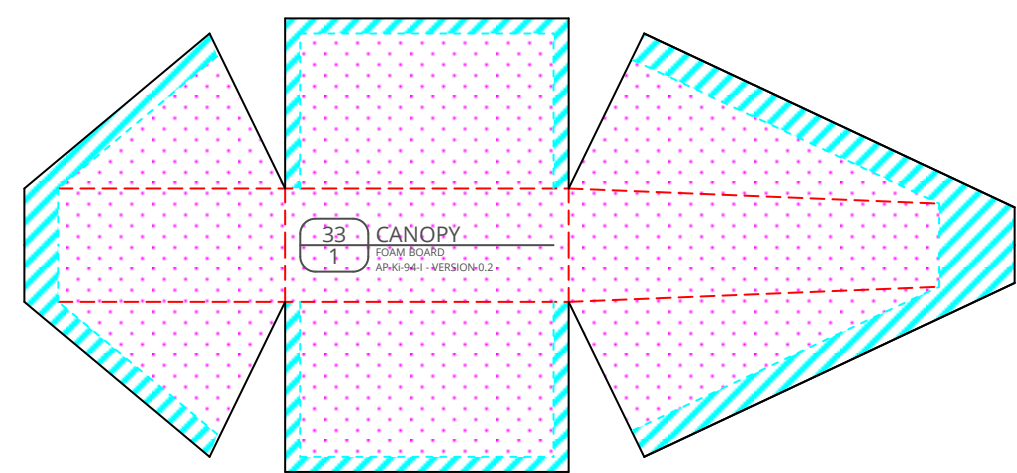
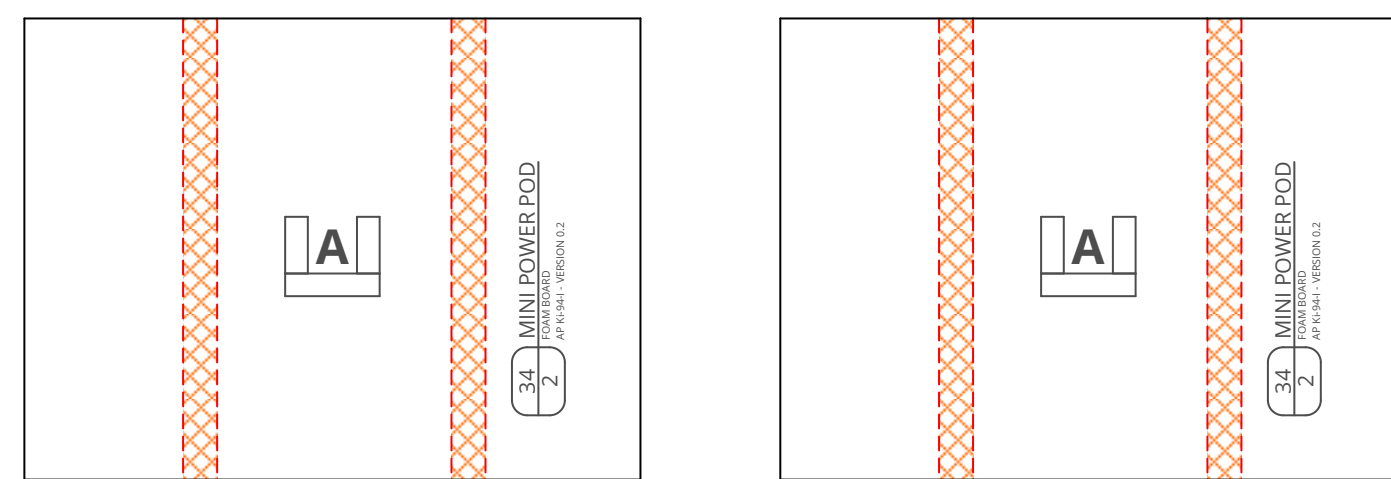


BETA

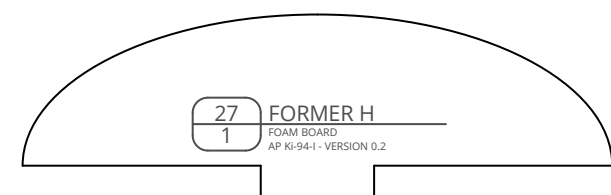
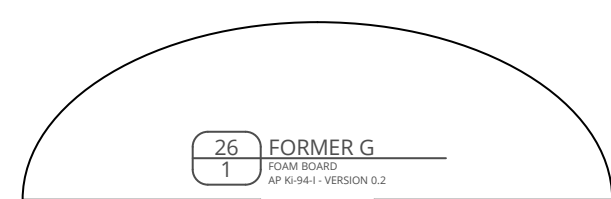
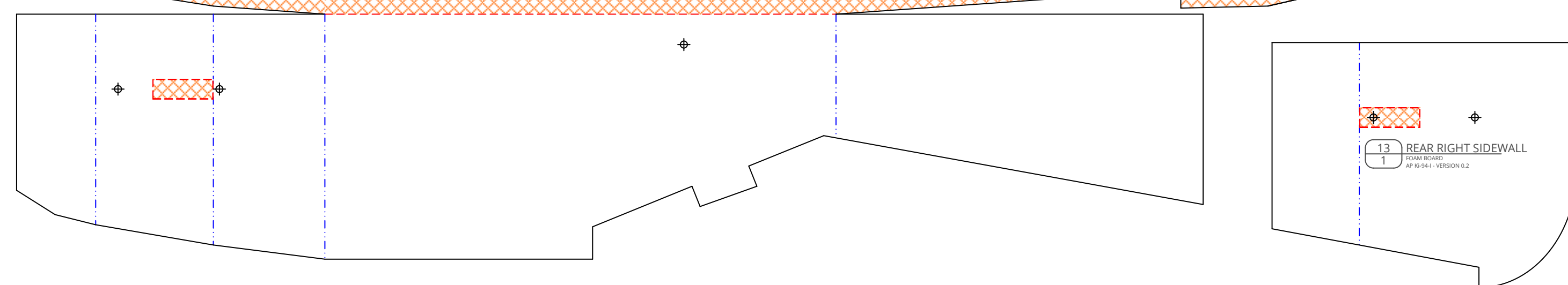
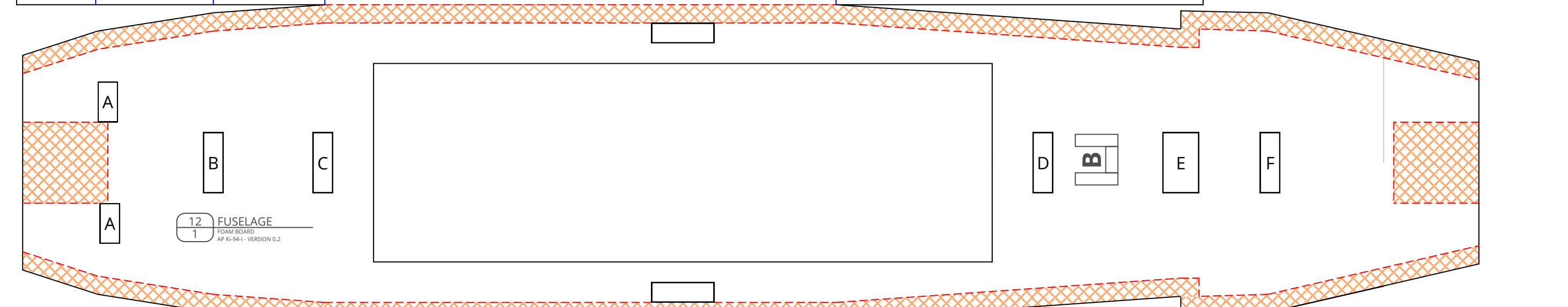
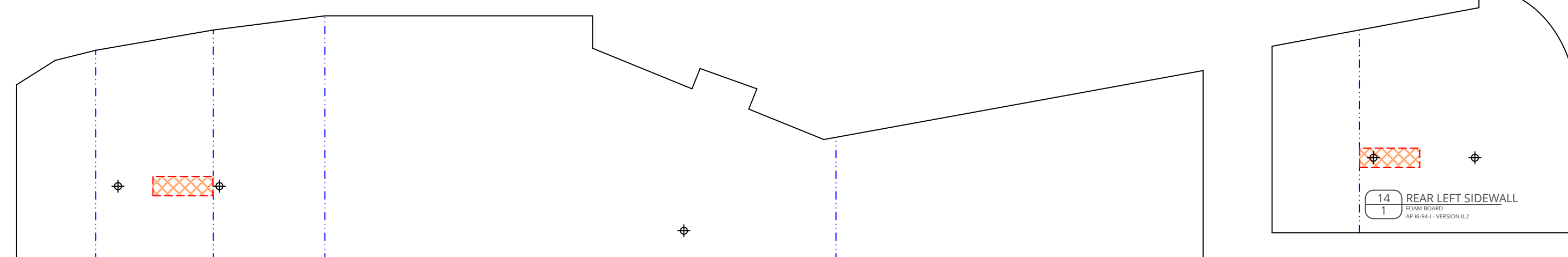
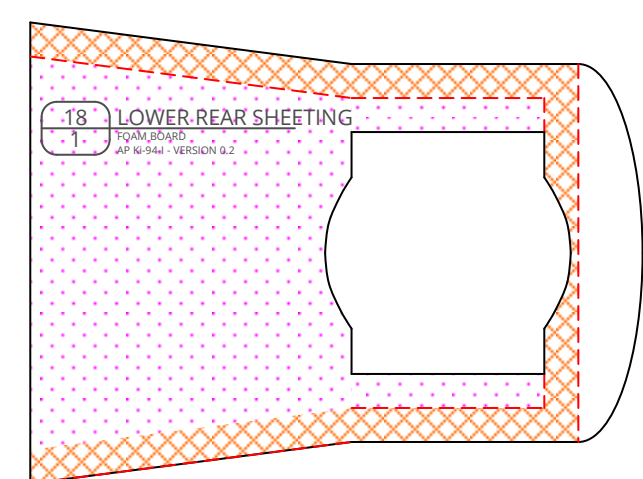
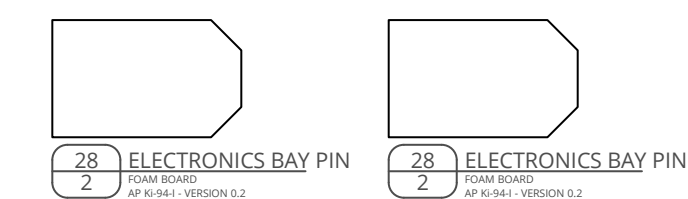
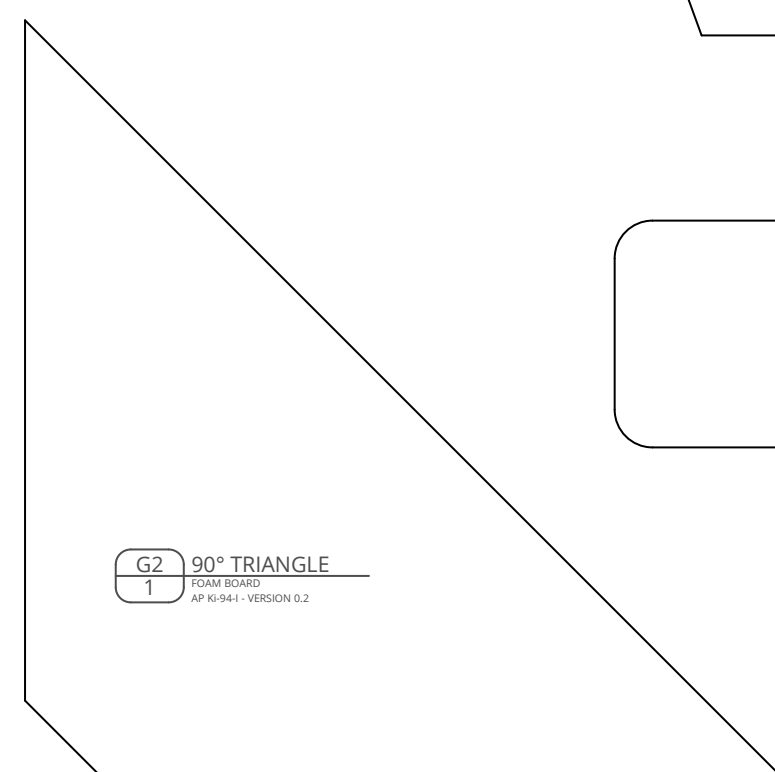
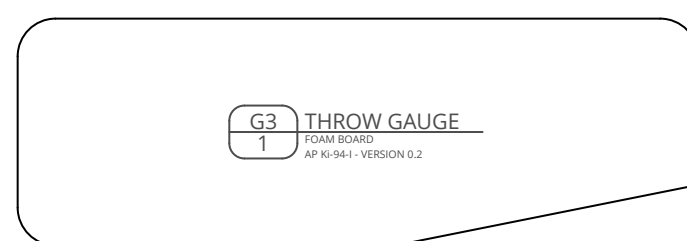
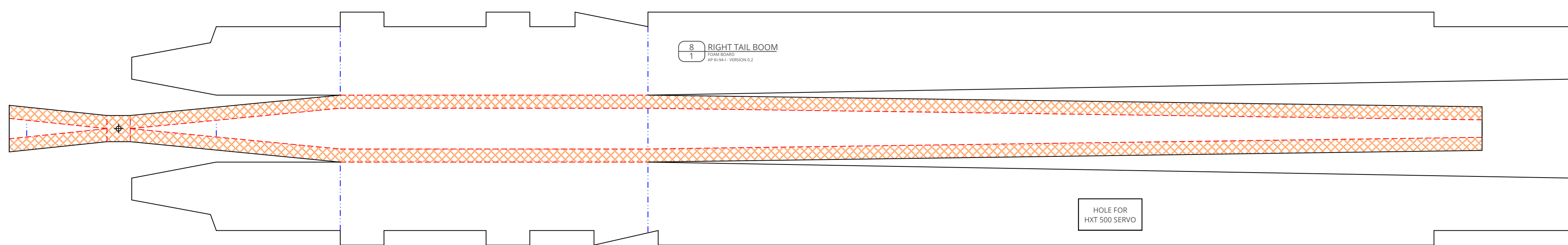
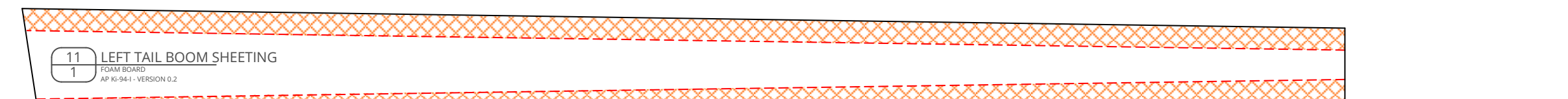
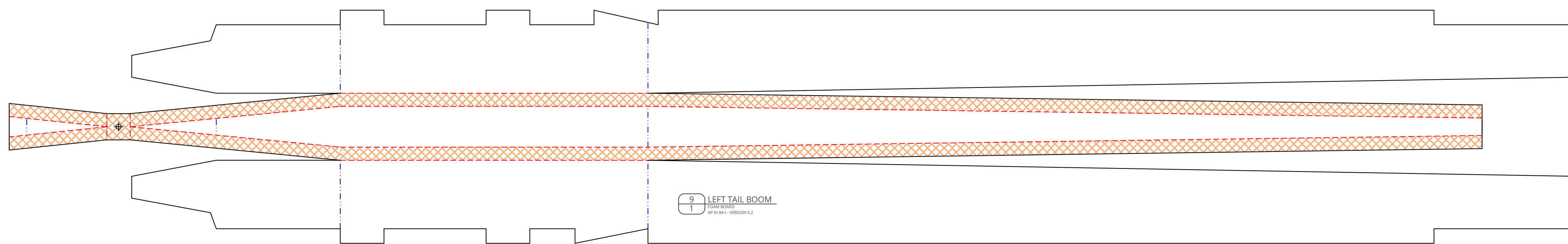


AP Tachikawa Ki-94-I ... THE FLYING SUMO FIGHTER - VERSION 0.2 (2018-01-30)

Design & Drawing by: Tony Roehling

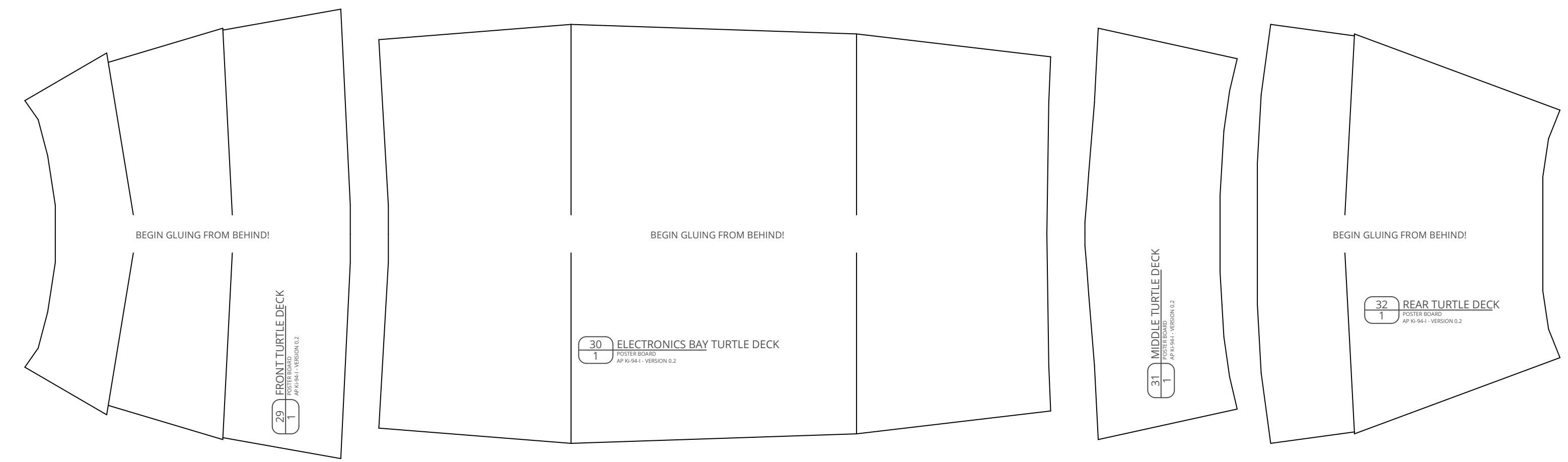


BETA

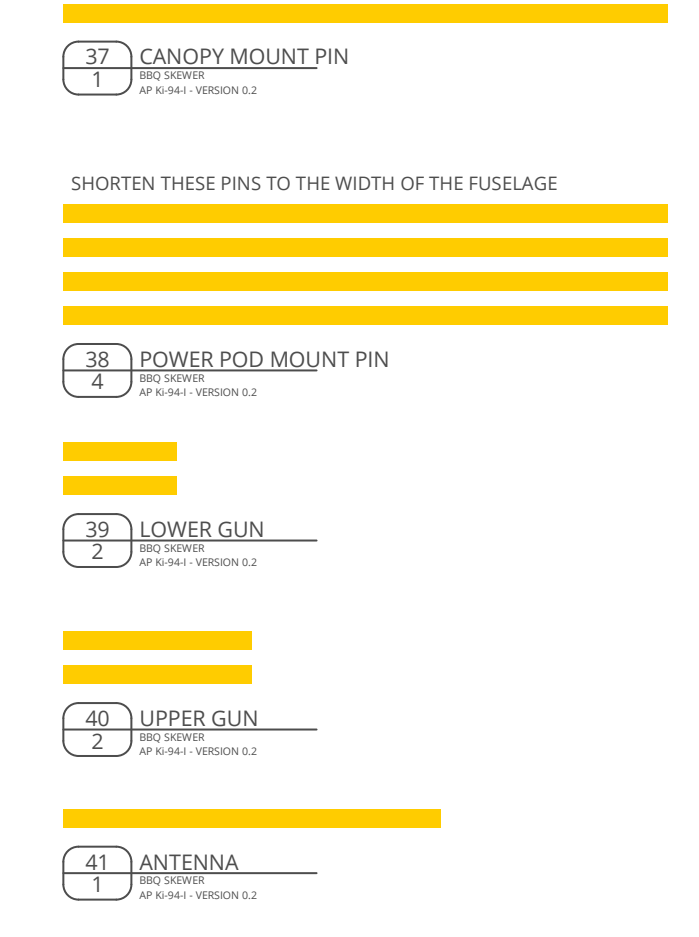
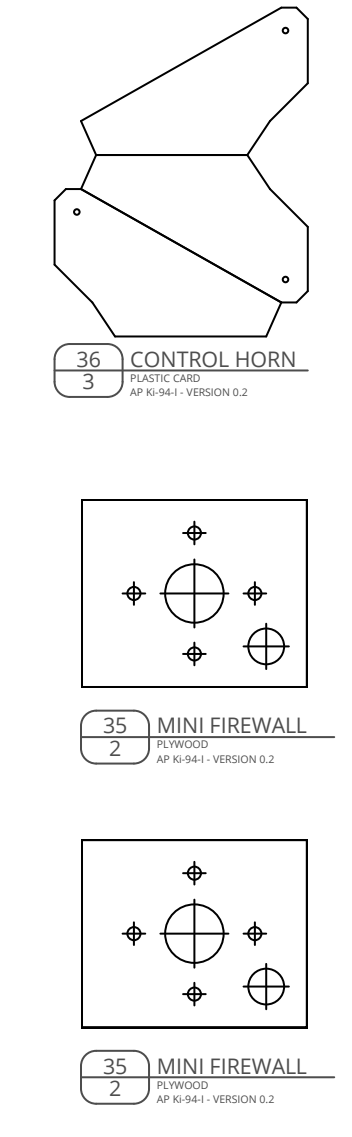


AP Tachikawa Ki-94-I ... THE FLYING SUMO FIGHTER - VERSION 0.2 (2018-01-30)

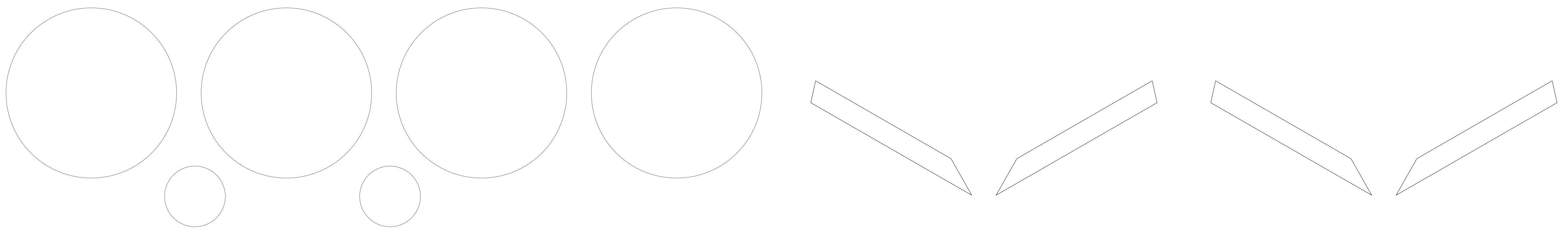
Design & Drawing by: Tony Roehling



BETA



TEMPLATES FOR CUTTING ADESIVE FILM



STICKERS

