



AP Rascal F

SPECS

WINGSPAN: 1000 mm | 39.37 in
CG: 37 mm | 1.46 in
LENGTH: 690 mm | 27.17 in
WEIGHT: 452 g | 15.95 oz
ALL UP WEIGHT: 690 g | 24.34 oz (4S 2200 mAh)
EXPO: 30 %
CHANNELS: 4 (THR | AIL | ELV | RUD)

ELECTRONICS - BASIC SETUP

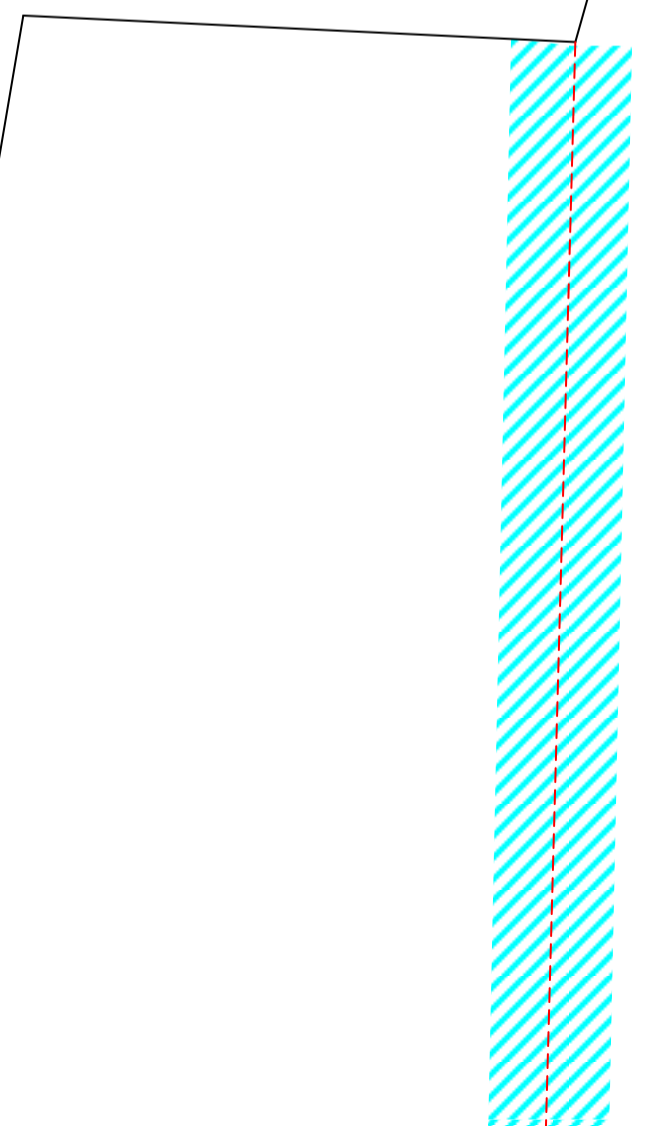
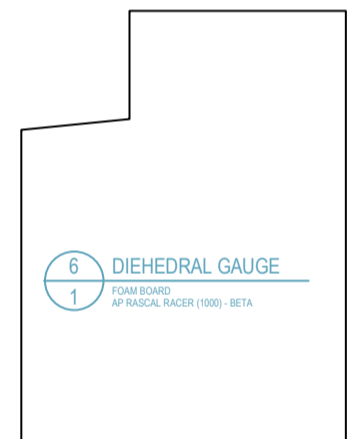
MOTOR: 2836 - 1100 kv
PROPELLER: 7 x 4.5
ESC: 40A 4S
SERVOS: 4 x 9 g (HXT900 or TGY-1800A)
BATTERY: 2200 mAh 4S

LINE TYPE / COLOR:

—	CUT	
- - -	SCORE CUT	
- · - · -	CREASE	
	45° SINGLE BEVEL	
	DOUBLE BEVEL	
	CAVITY	
	CAVITY OTHER SIDE	

PART NUMBER

00 NAME

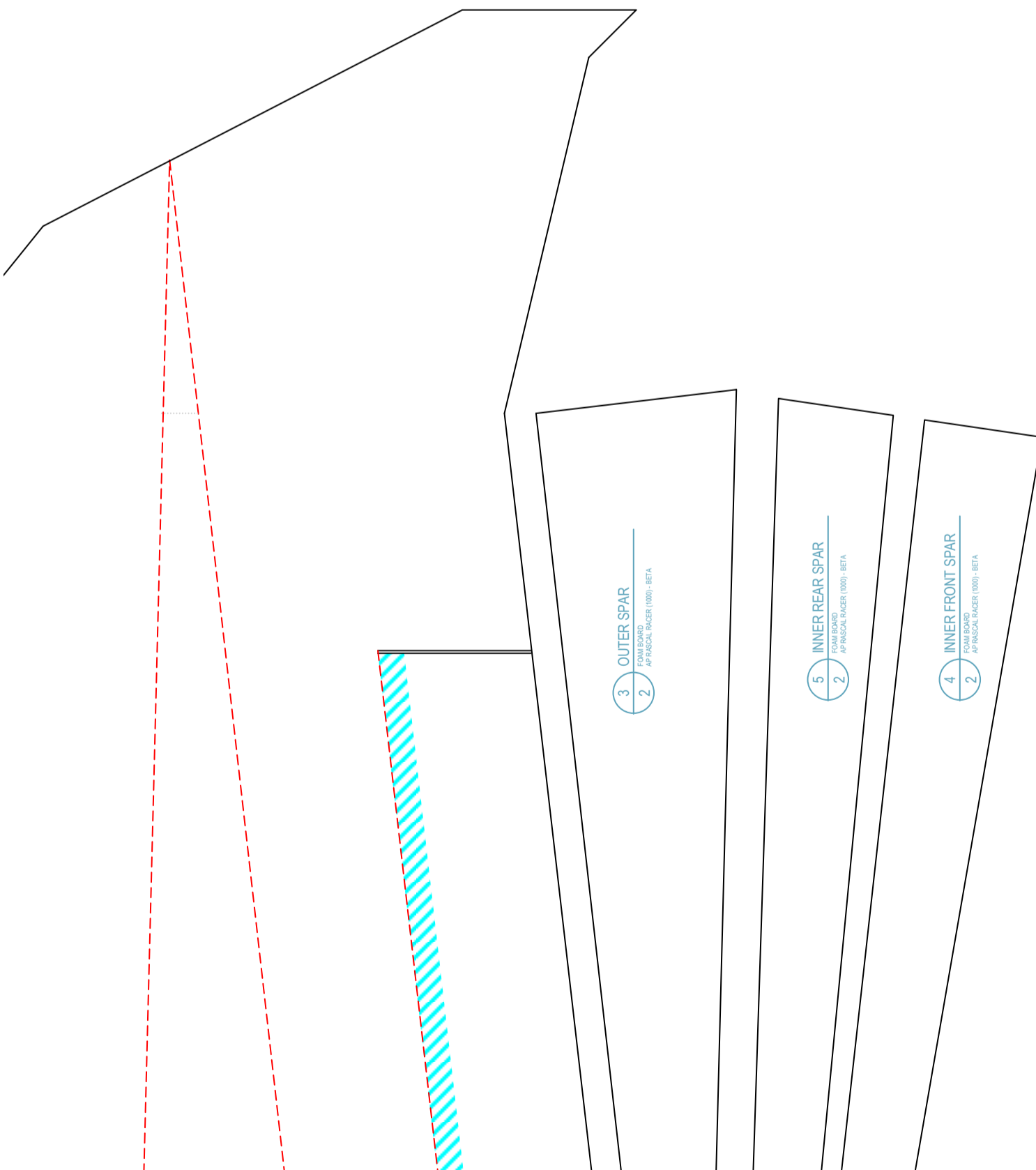


Racer (1000)

BETA (2016-05-18)



AP Rascal Racer (1000) - BETA - SHEET 1 OF 4

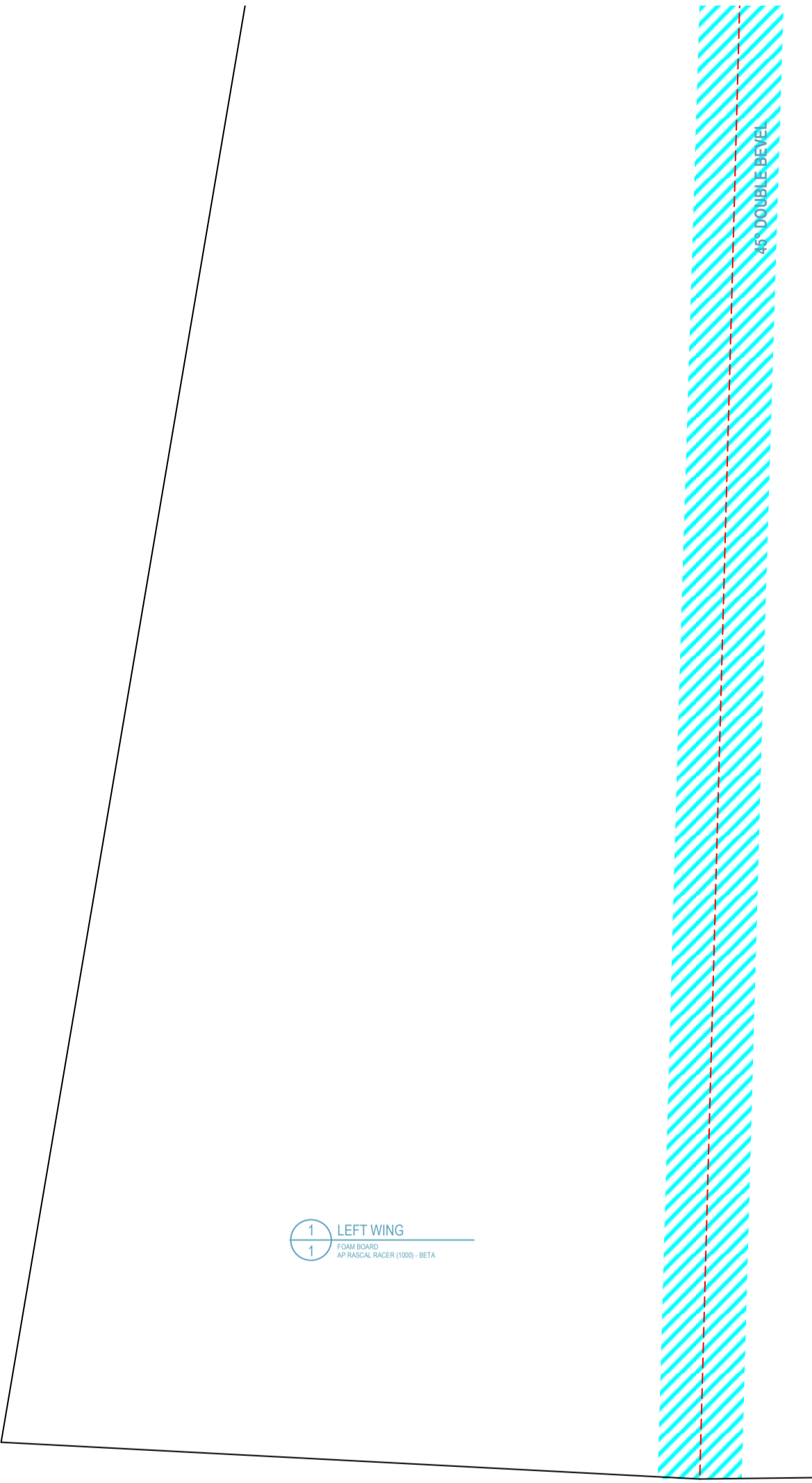
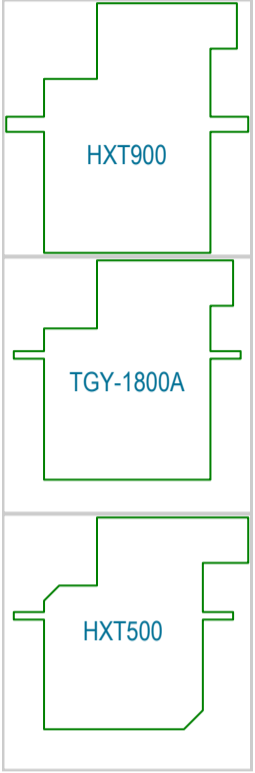


0 MATERIAL MODEL - VERSION



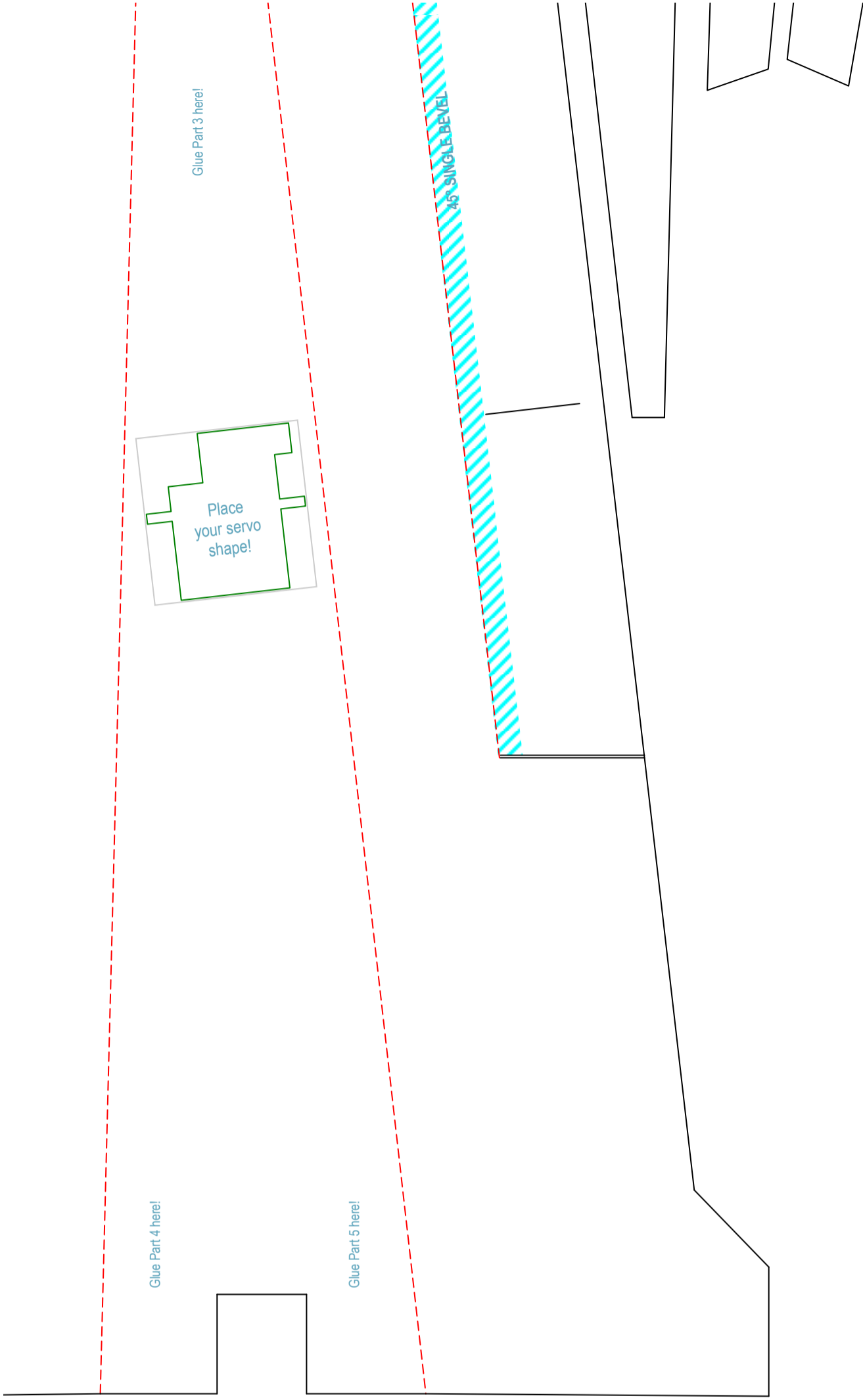
QUANTITY

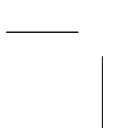
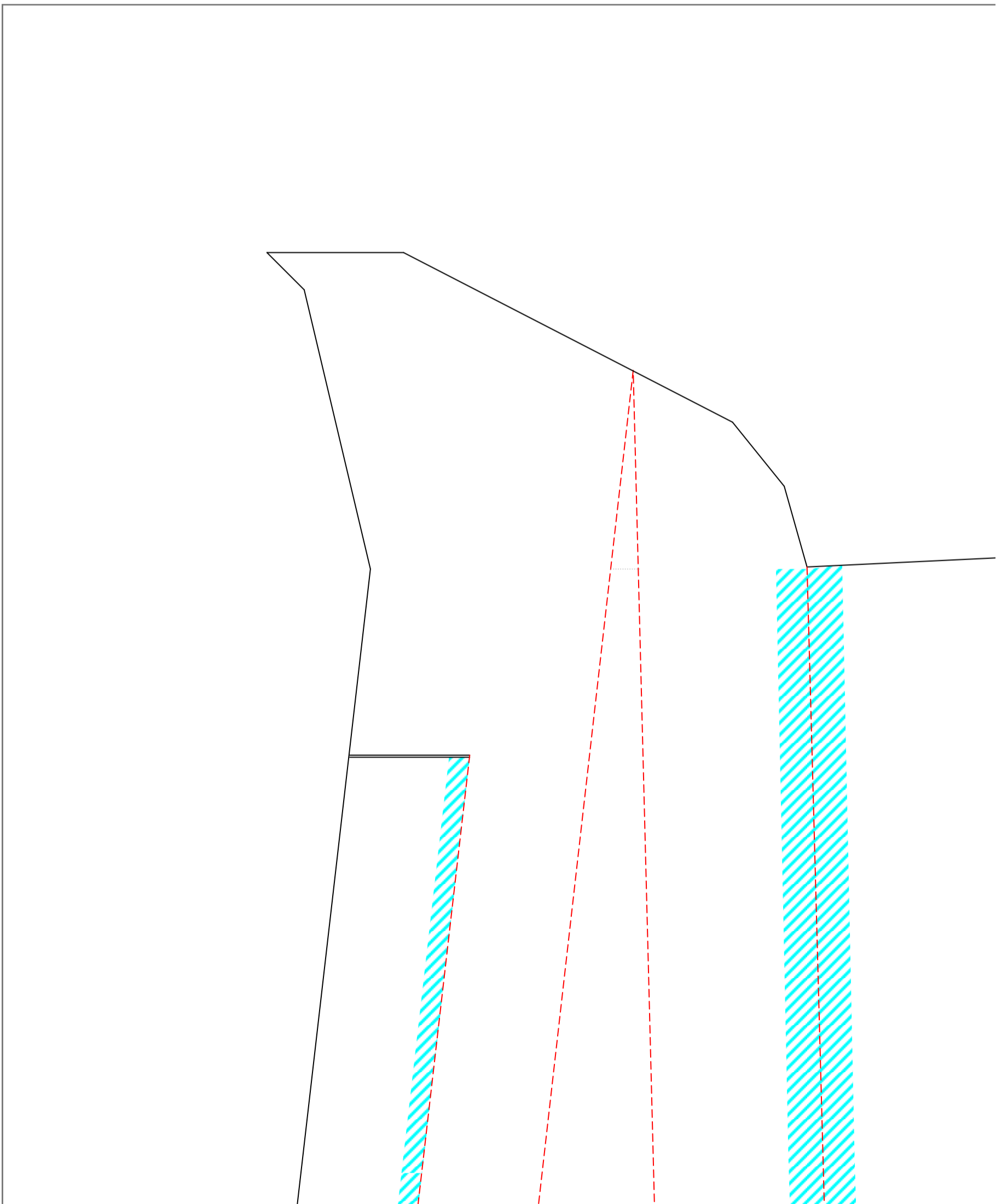
CHOOSE A SERVO SHAPE OR CREATE YOUR OWN!



45° DOUBLE BEVEL

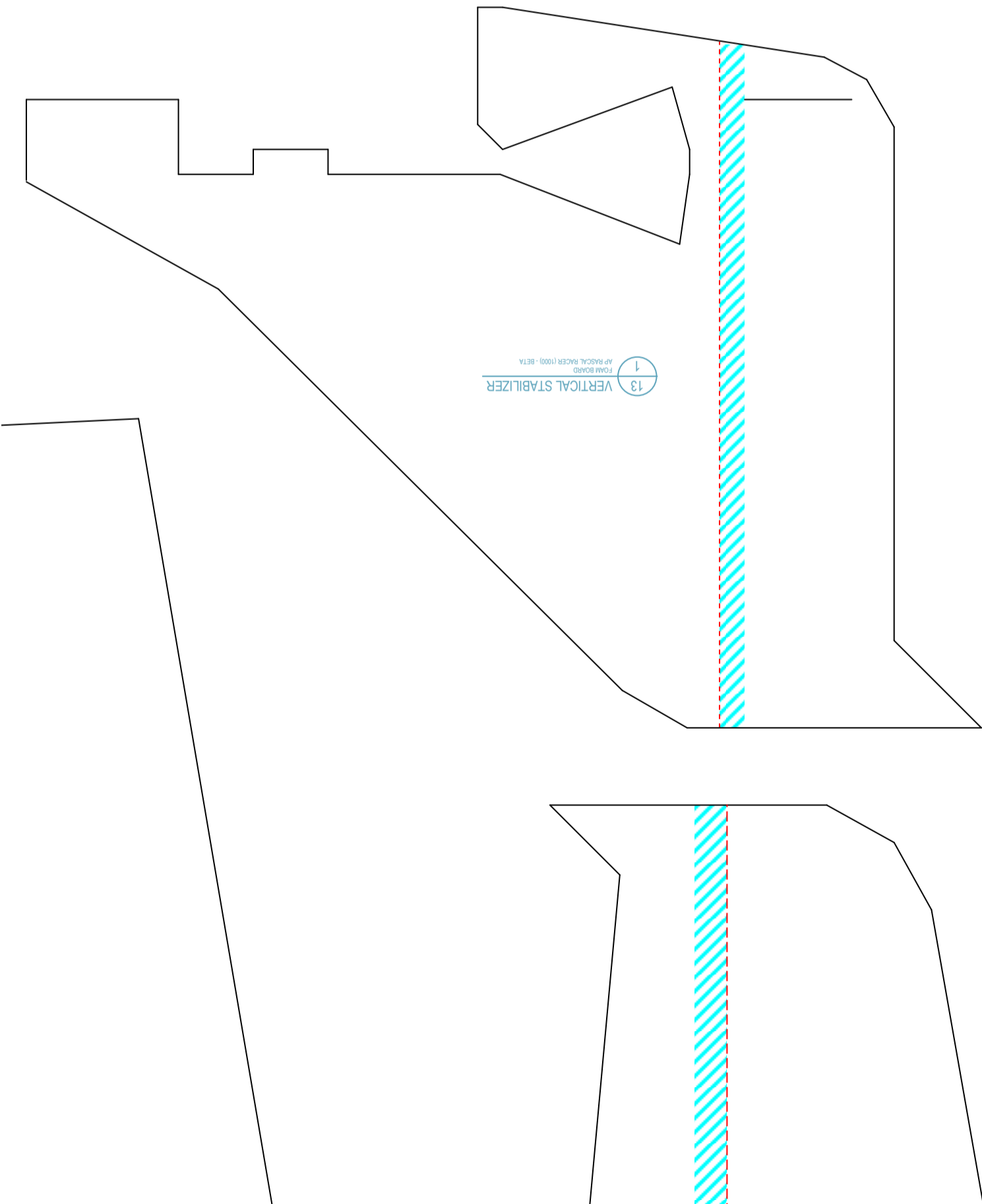
1 LEFT WING
1 FOAM BOARD
1 AP RASCAL RACER (1000) - BETA



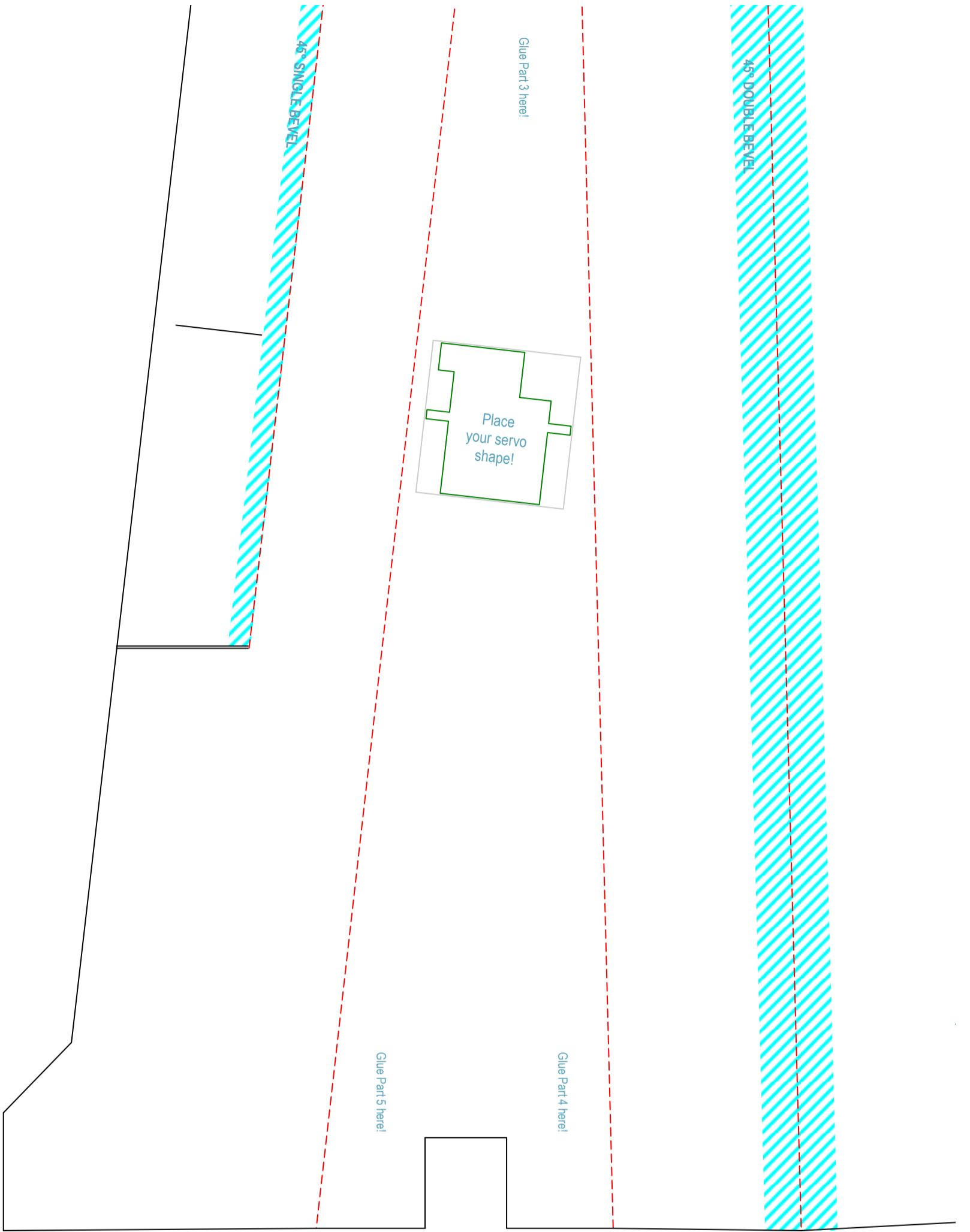




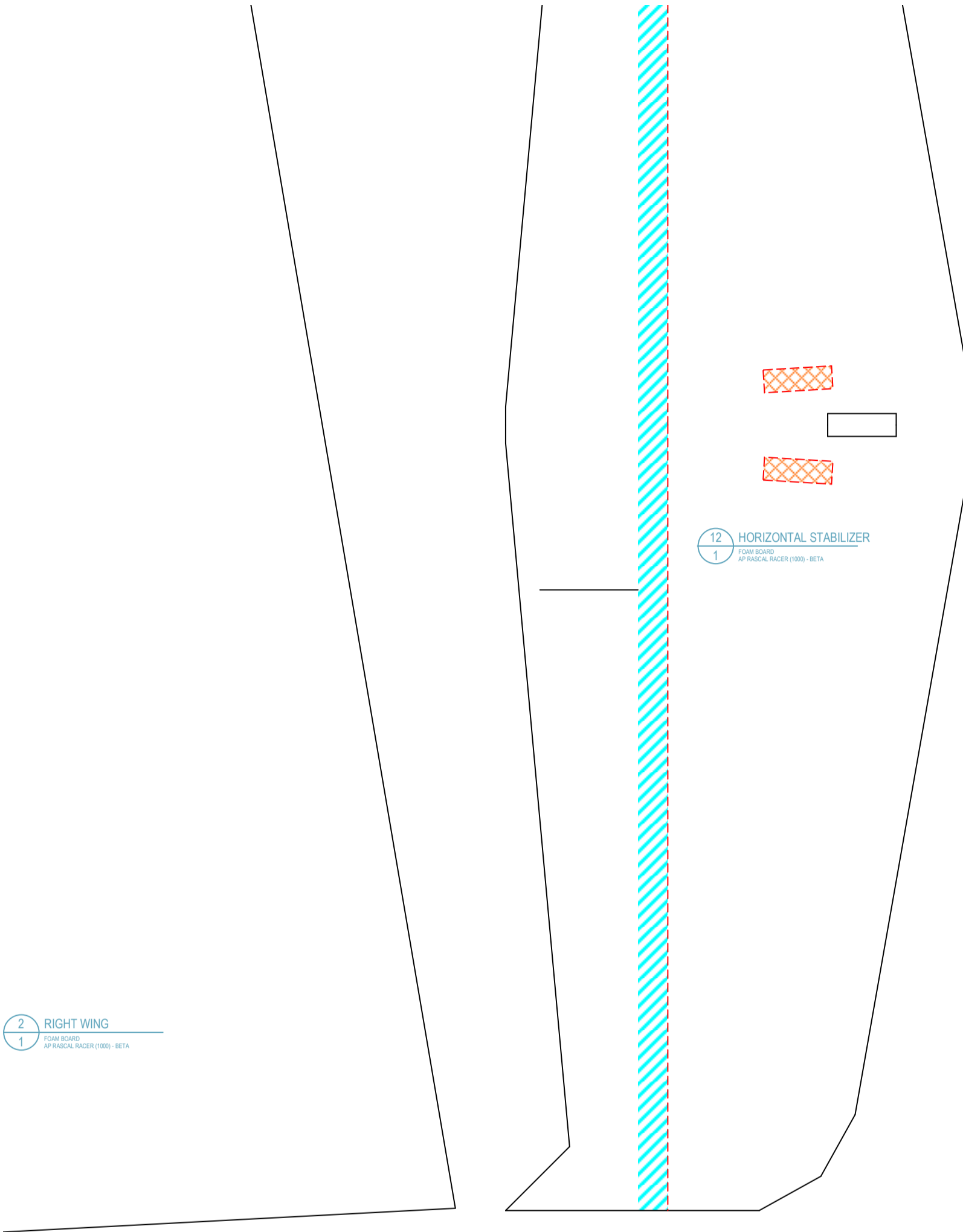
AP Rascal Racer (1000) - BETA - SHEET 2 OF 4



13
FOAM BOARD
AP RASCAL RACER (1000) - BETA

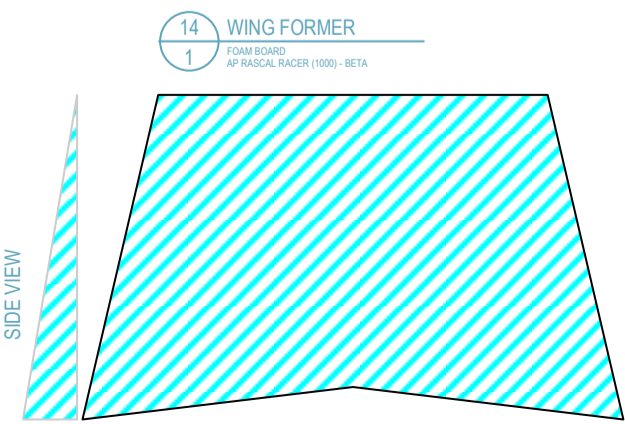
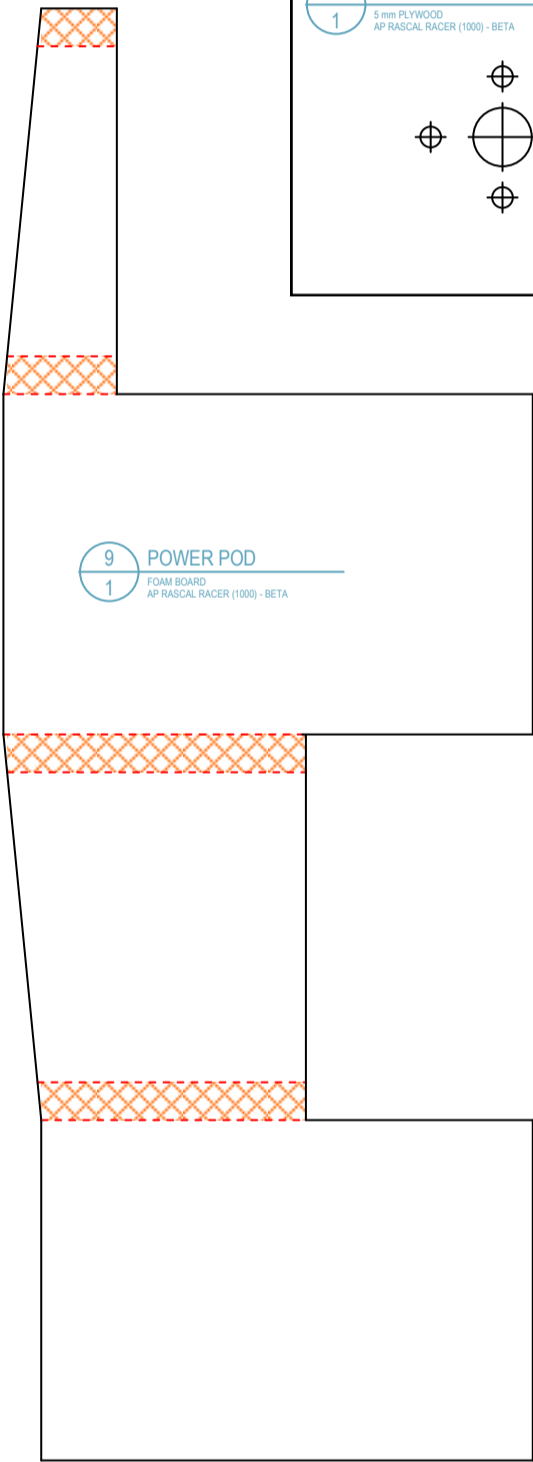
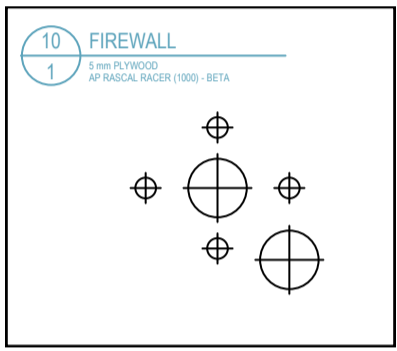


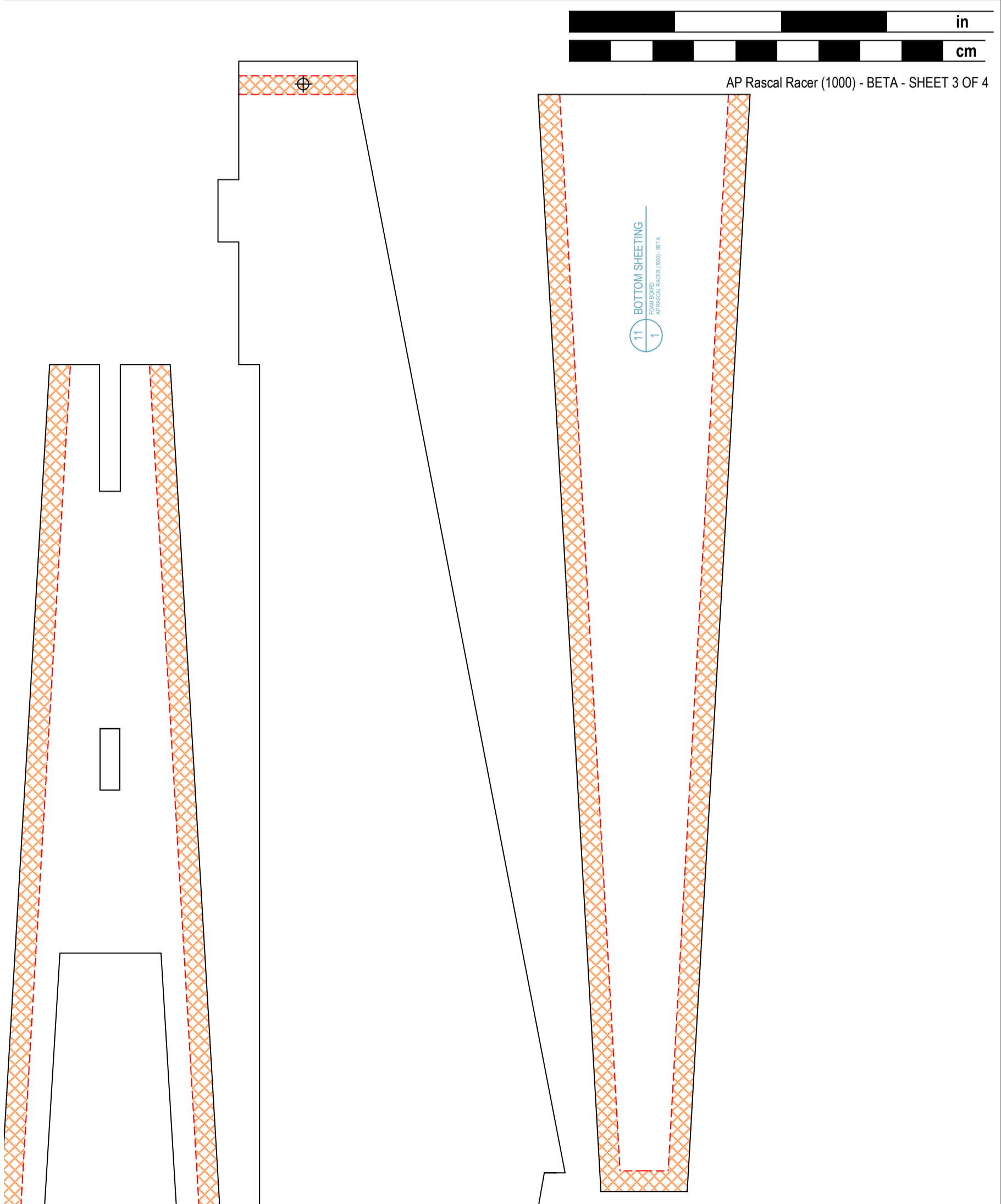
2 RIGHT WING
1 FOAM BOARD
AP RASCAL RACER (1000) - BETA



12 HORIZONTAL STABILIZER
1 FOAM BOARD
AP RASCAL RACER (1000) - BETA

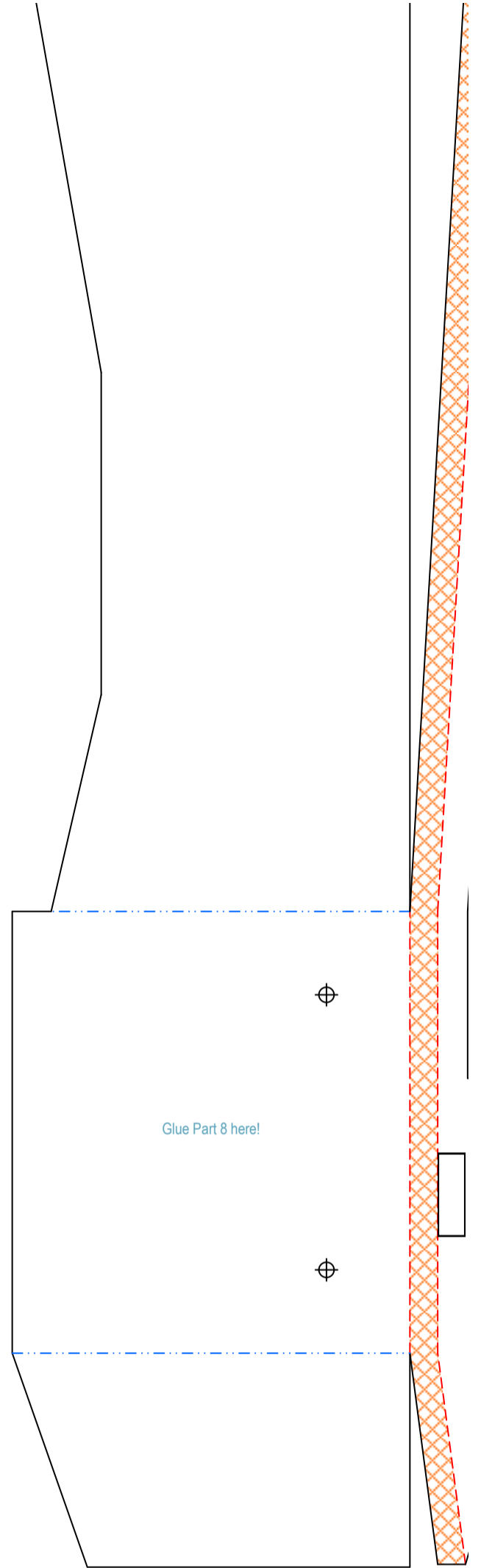
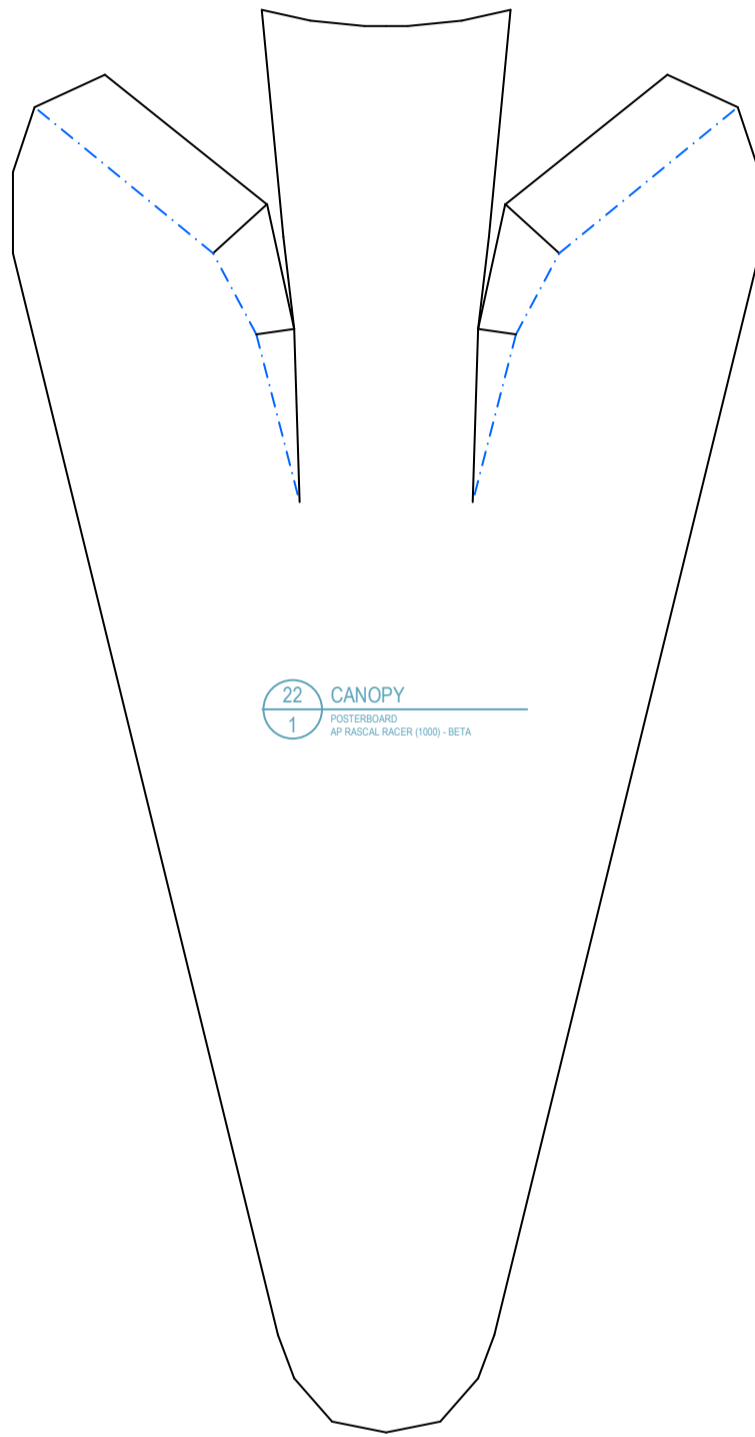
Copyright © 2016 Air Pirates. Plans provided free of charge. Copies allowed for personal use only. Not for commercial use.

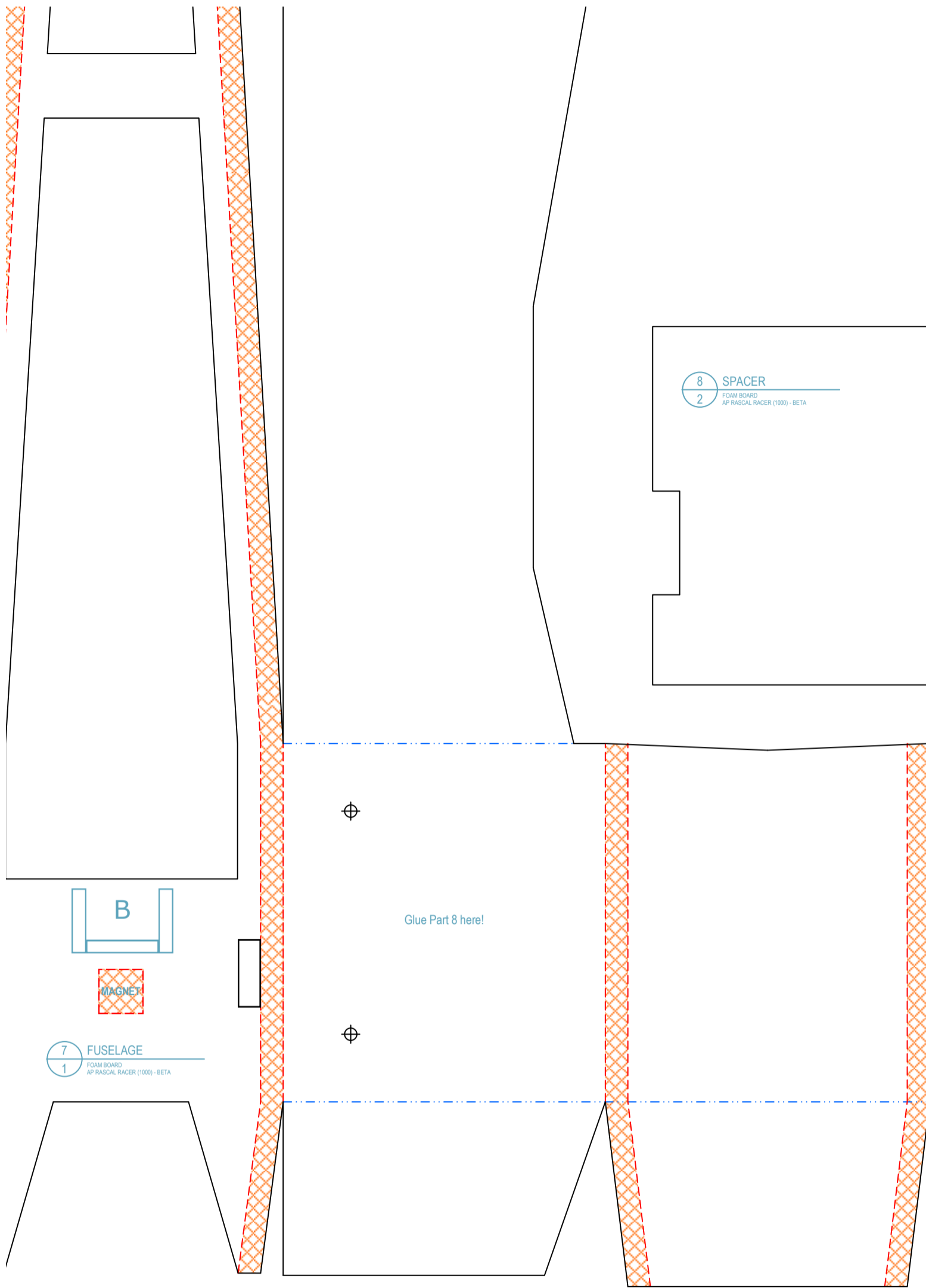




AP Rascal Racer (1000) - BETA - SHEET 3 OF 4

11 BOTTOM SHEETING
FOAM BOARD
AP RASCAL RACER (1000) - BETA





8 SPACER
 2 FOAM BOARD
 AP RASCAL RACER (1000) - BETA

7 FUSELAGE
 1 FOAM BOARD
 AP RASCAL RACER (1000) - BETA

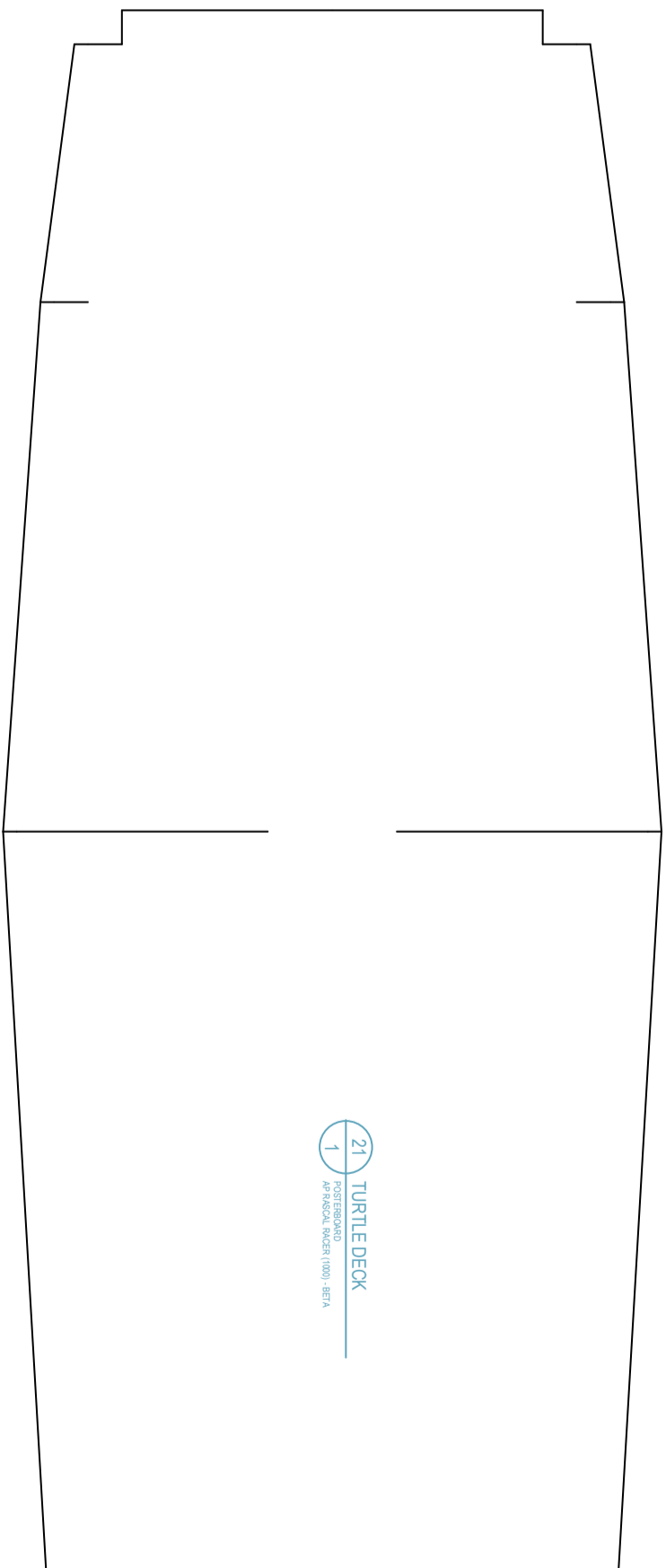
MAGNET

B

Glue Part 8 here!

Copyright © 2016 Air Pirates. Plans provided free of charge. Copies allowed for personal use only. Not for commercial use.

21 TURBLE DECK
POSTERBOARD
1 AP PASCAL RACER (1000) - BETA





AP Rascal Racer (1000) - BETA - SHEET 4 OF 4

