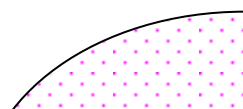
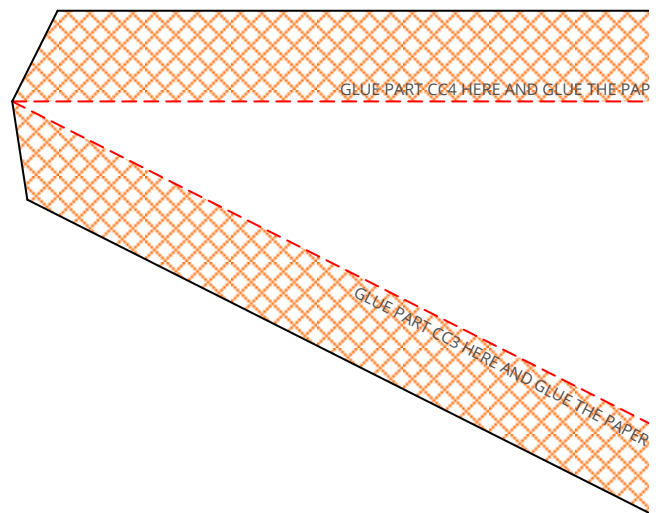
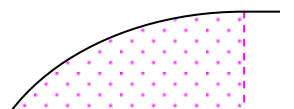
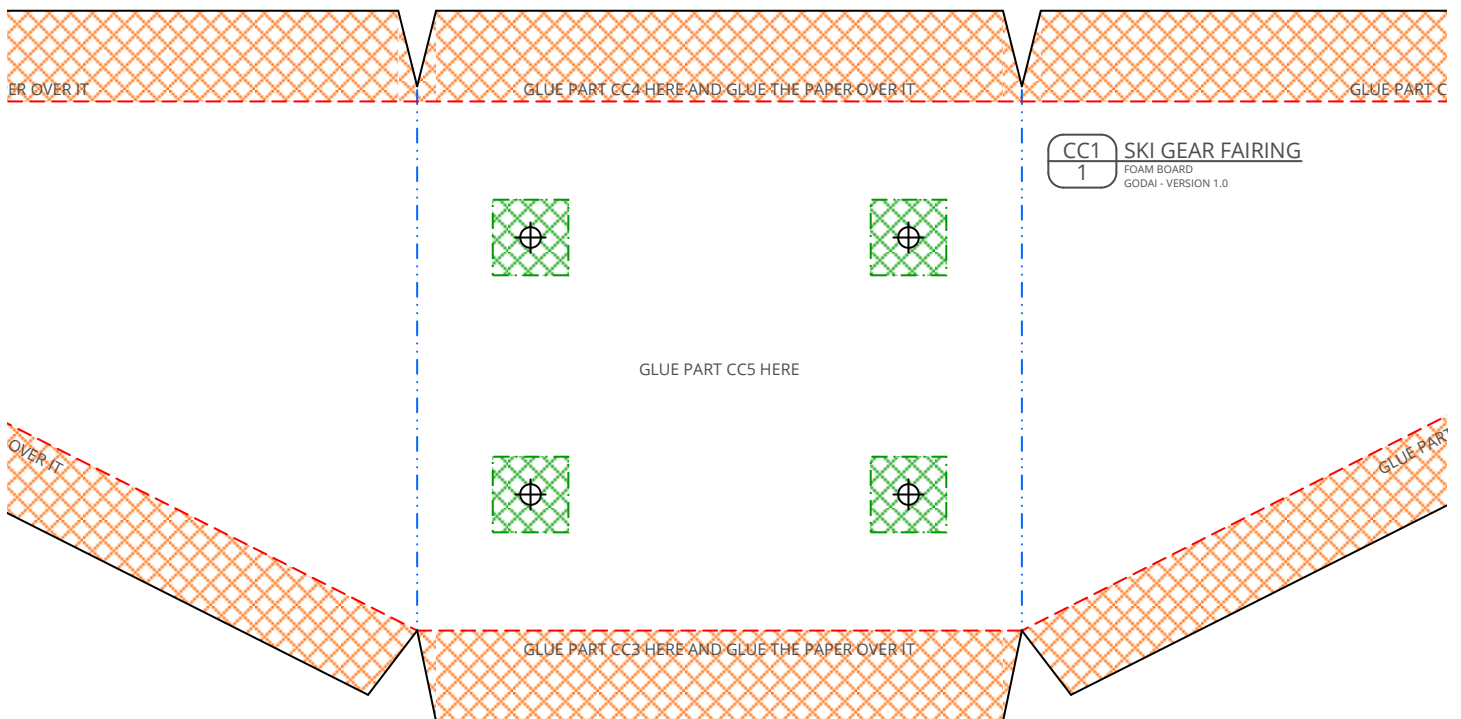


# AP Godai - SECTION

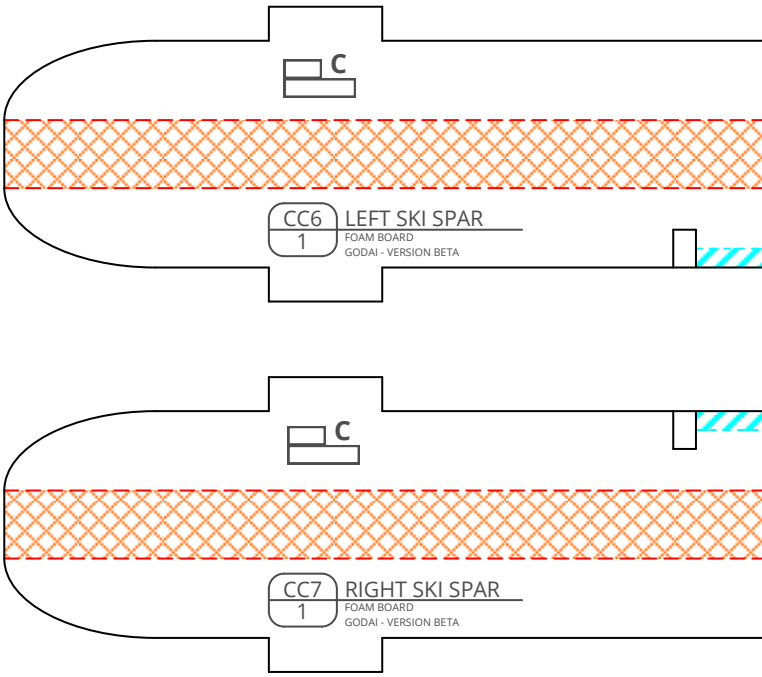
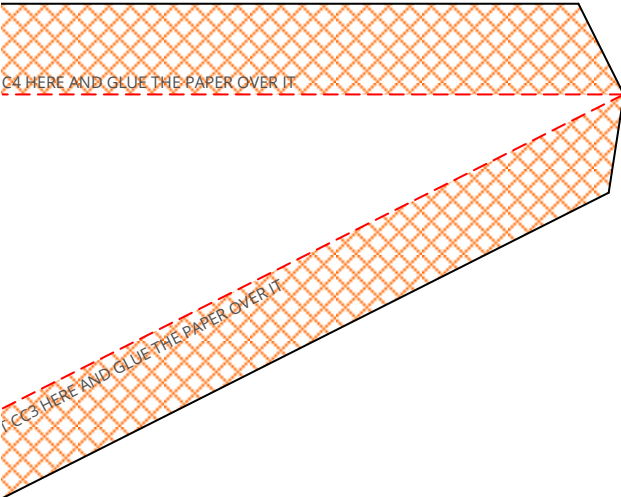
Design & Drawing by: Tony Roehling



# ON CC - UNDERCARRIAGE WITH

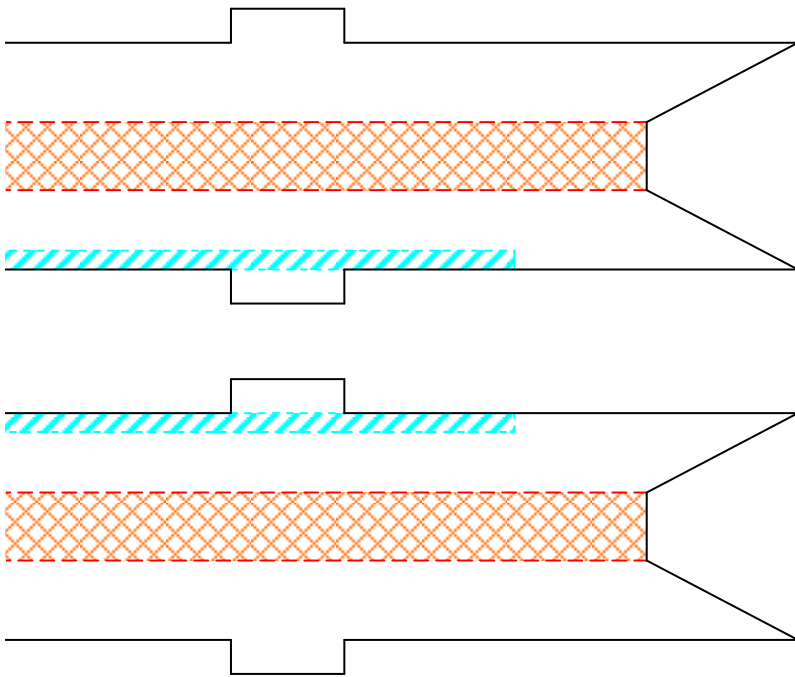


# SKIS - VERSION 1.0 (2017-08-18)

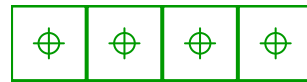


in

cm



## PARTS MADE OF PLYWOOD (n



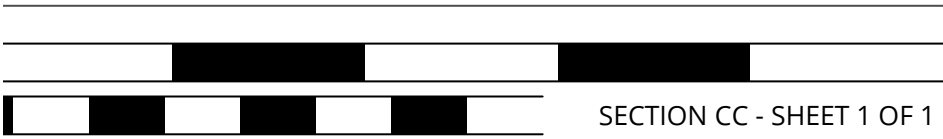
**CC2** SCREW SPACER (OPTIONAL)  
4 PLYWOOD max. 5mm | 0.19in  
AP.GODAI - VERSION BETA

## PARTS MADE OF BBQ SKEWER



**CC3** REINFORCEMENTS FOR PART CC1  
1 BBQ SKEWER  
GODAI - VERSION BETA

## PARTS MADE OF PLASTIC CAR



SECTION CC - SHEET 1 OF 1

max. 5mm | 0.19in)

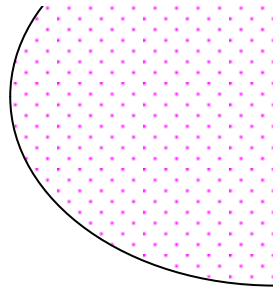


**S**



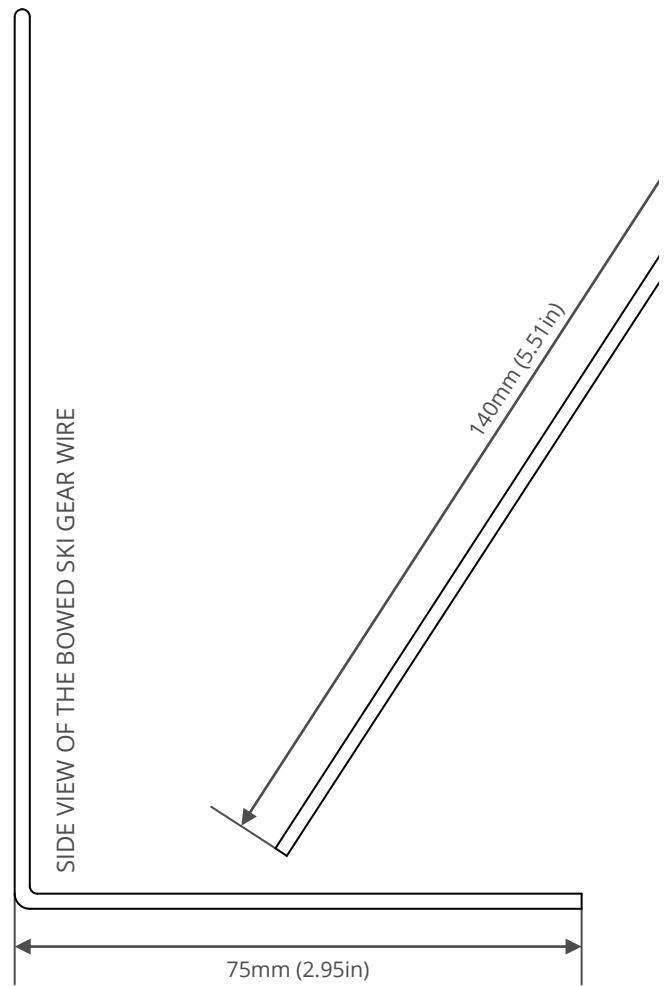
**D**



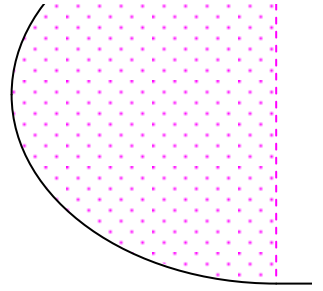


CC8  
2

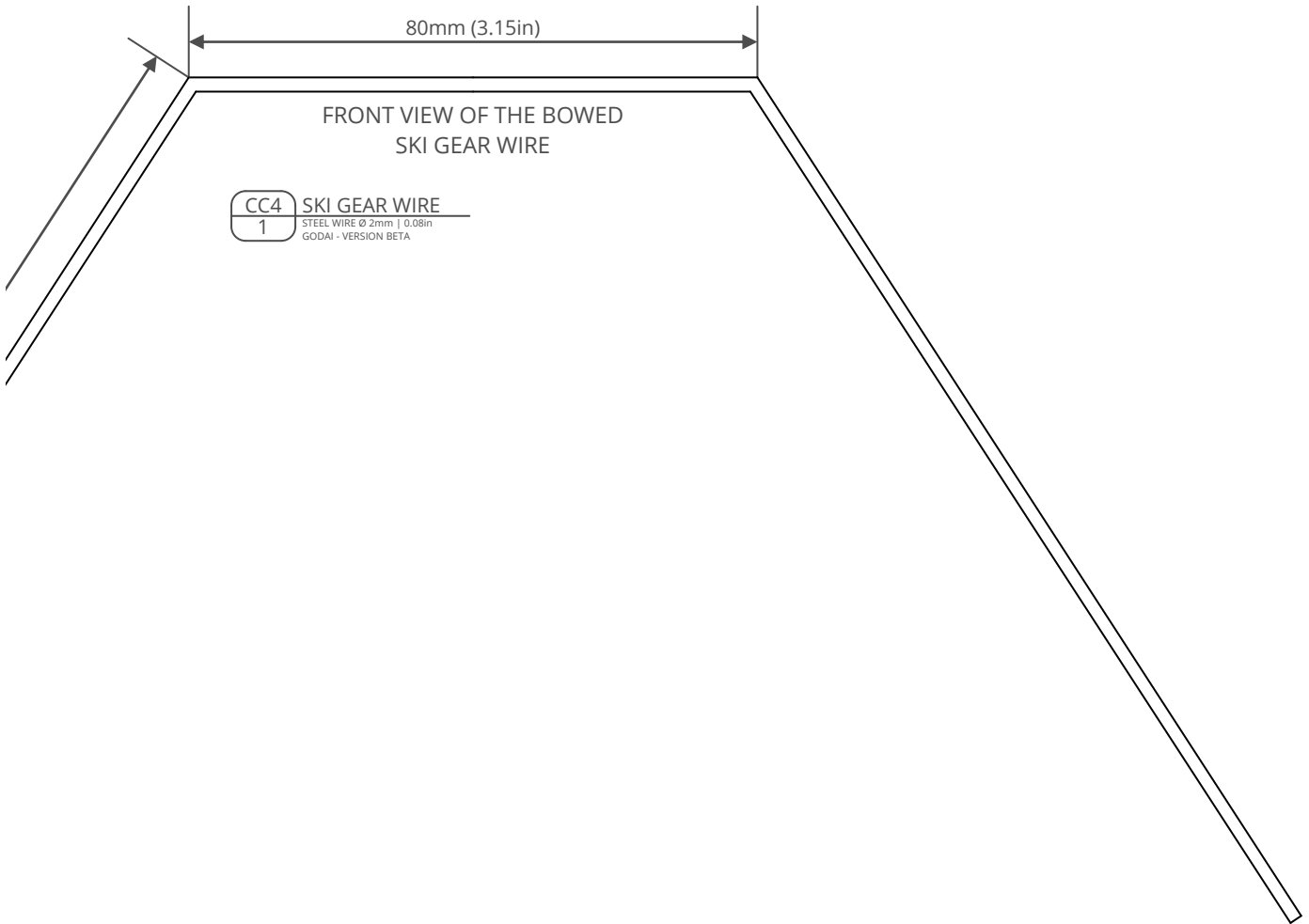
## PARTS MADE OF STEEL WIRE (min.)



SKI  
FOAM BOARD  
GODAI - VERSION BETA



Ø 2mm | 0.08in)





CC8 SKI  
2 FOAM BOARD  
GODAI - VERSION BETA



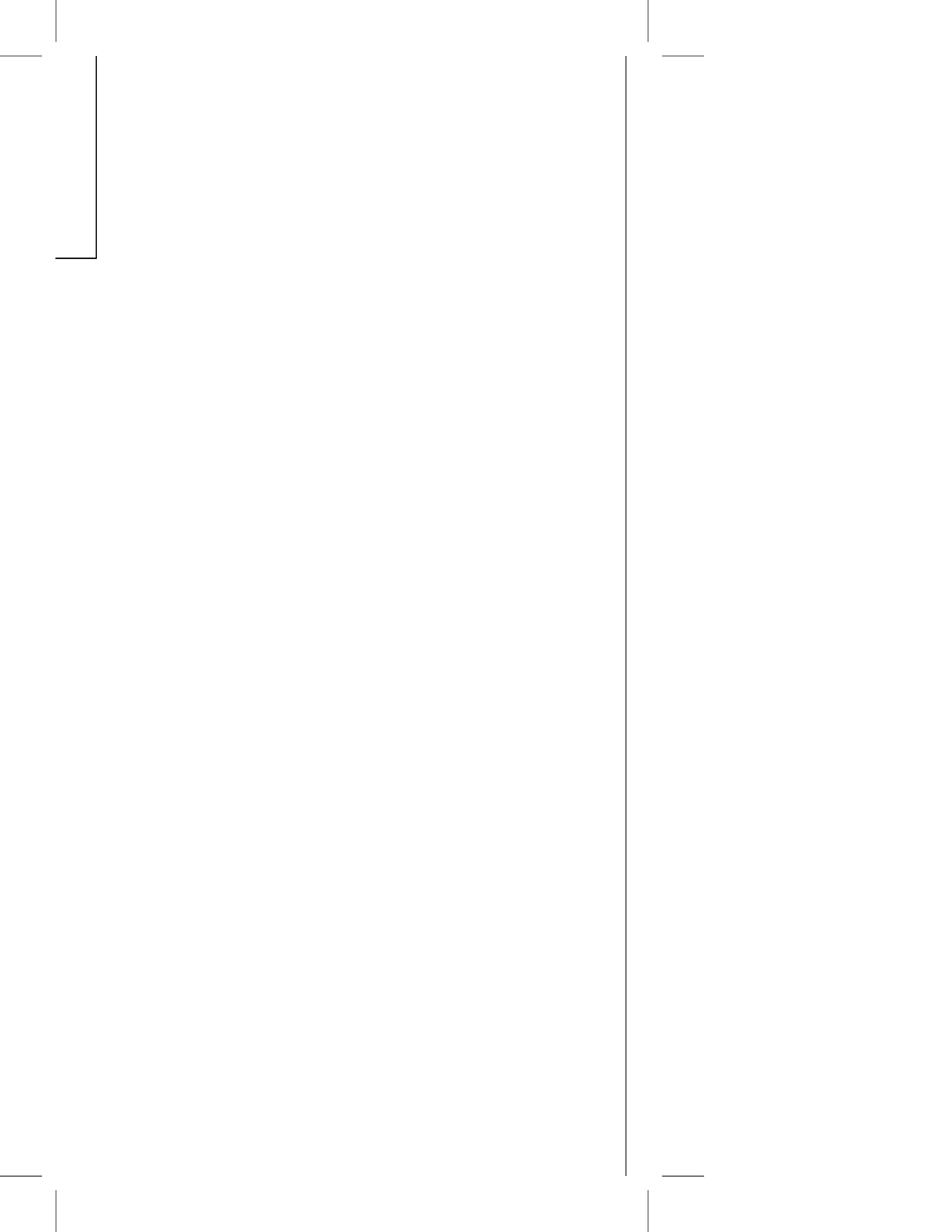




CC5  
1

OUTER GEAR MOUNT  
PLASTIC CARD  
GODAI - VERSION BETA







**[airc-pirates.com](http://airc-pirates.com)**







free of charge. Copies allowed for personal use only. Not for commercial use.