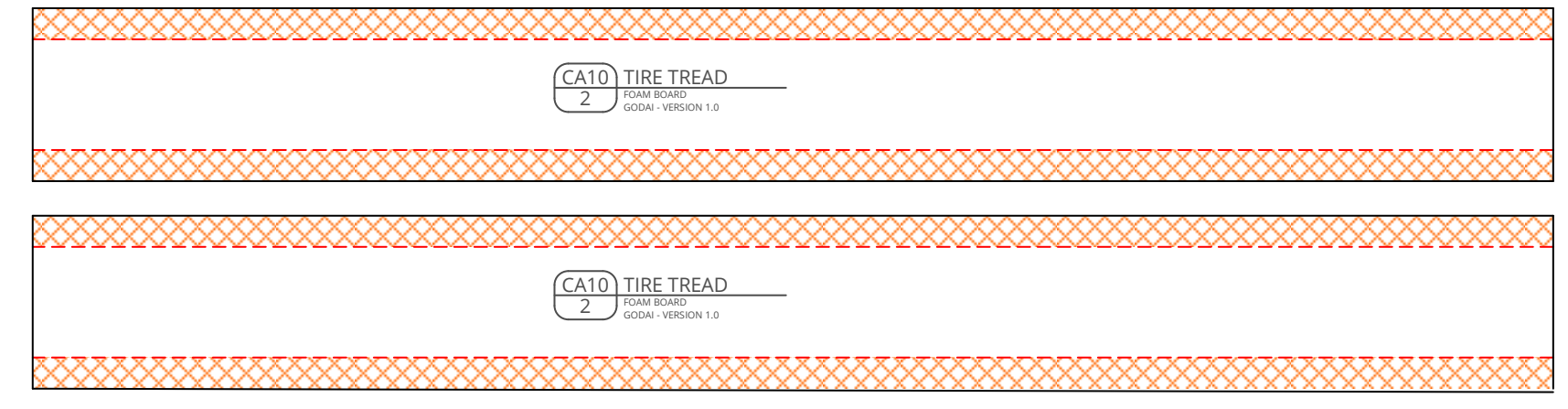
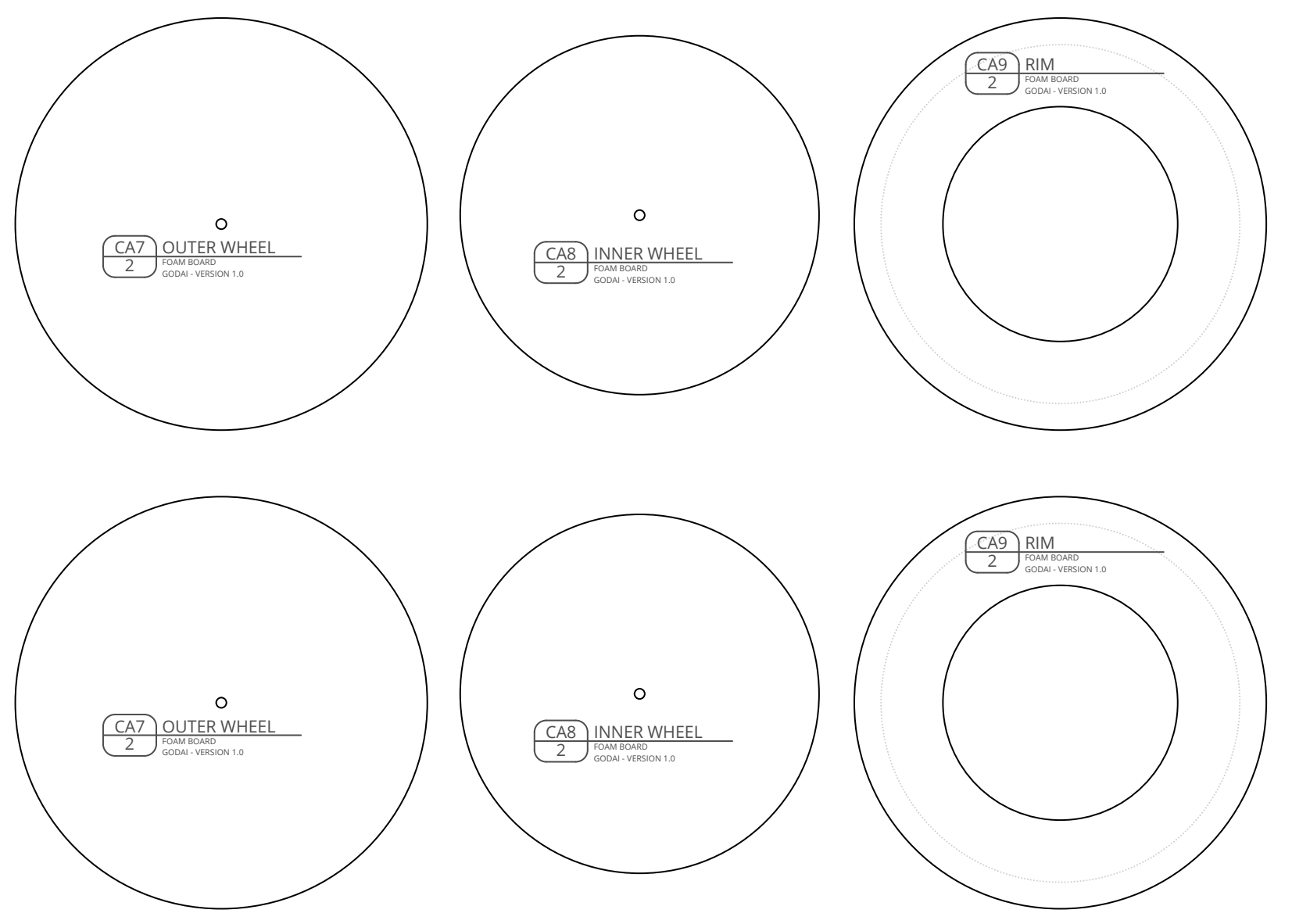
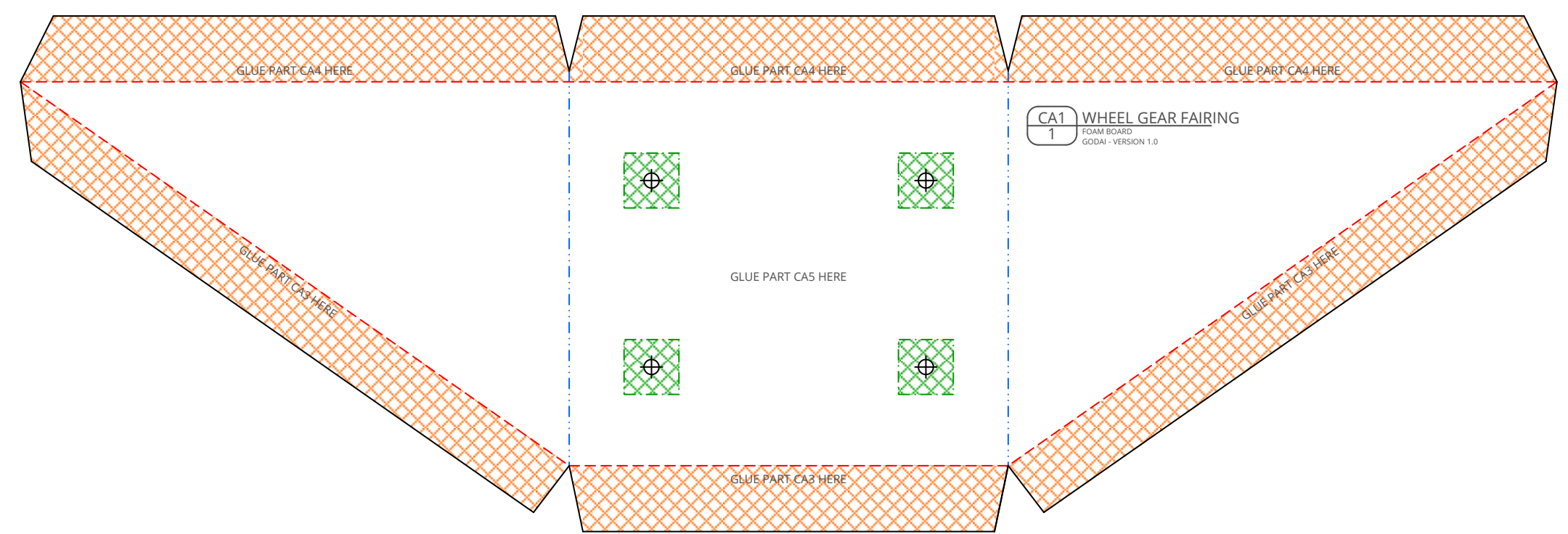
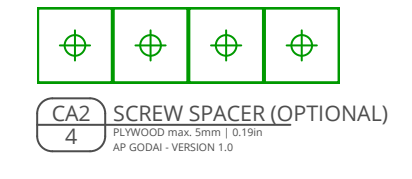


AP Godai - SECTION CA - UNDERCARRIAGE WITH WHEELS - VERSION 1.0 (2017-08-18)

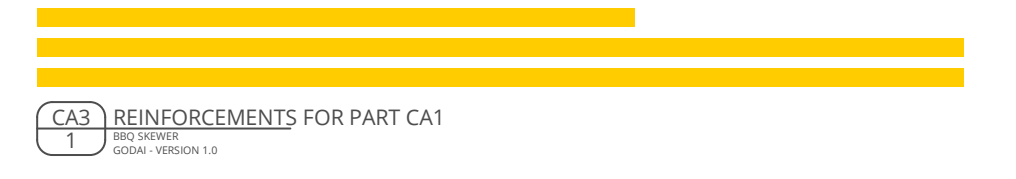
Design & Drawing by: Tony Roehling



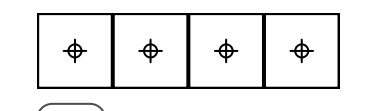
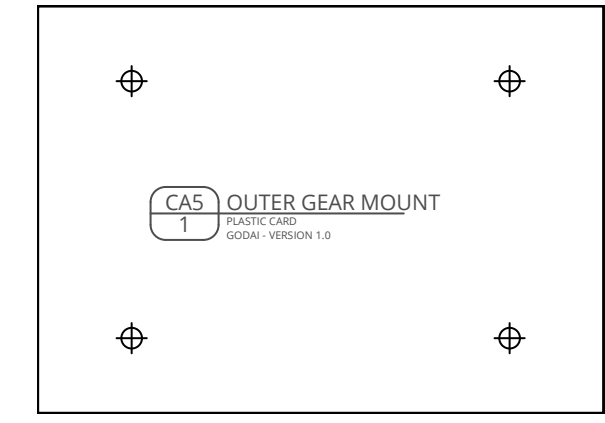
PARTS MADE OF PLYWOOD (max. 5mm | 0.19in)



PARTS MADE OF BBQ SKEWERS



PARTS MADE OF PLASTIC CARD



PARTS MADE OF STEEL WIRE (min. Ø 2mm | 0.08in)

