

Sea

**Airc Pirates - the sky is our ocean!**

DESIGNED & DRAWING BY: TONY ROEHLING

**LINE TYPE / COLOR:**

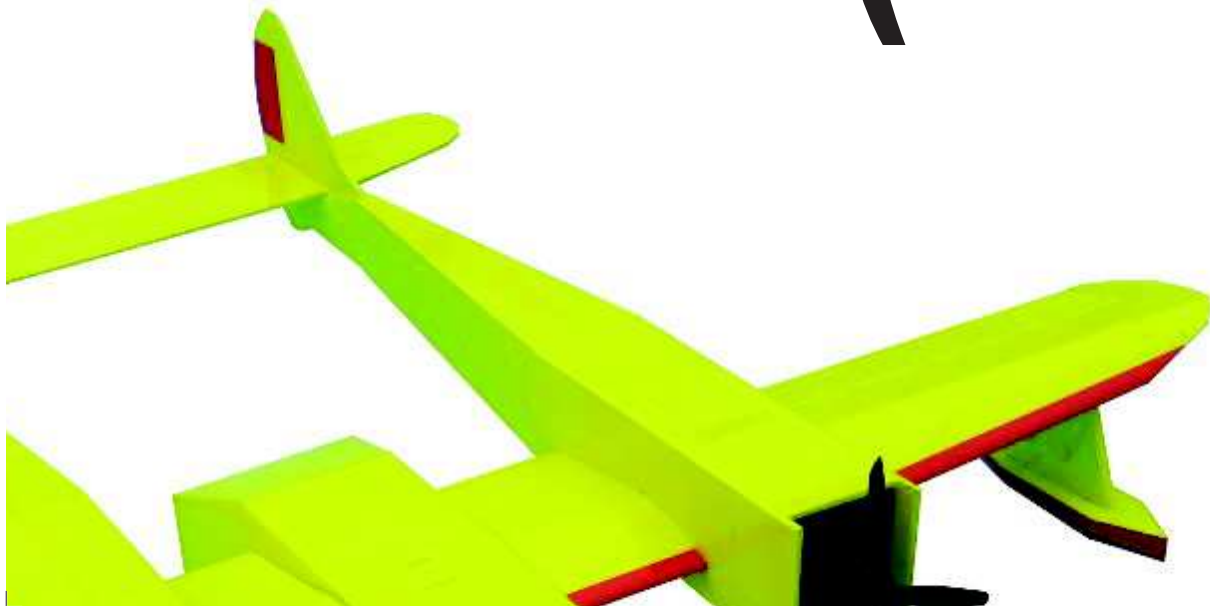
—— CUT      

—— SCORE CUT      

—— BEVEL 45°      



# a Duck (Conwing L.



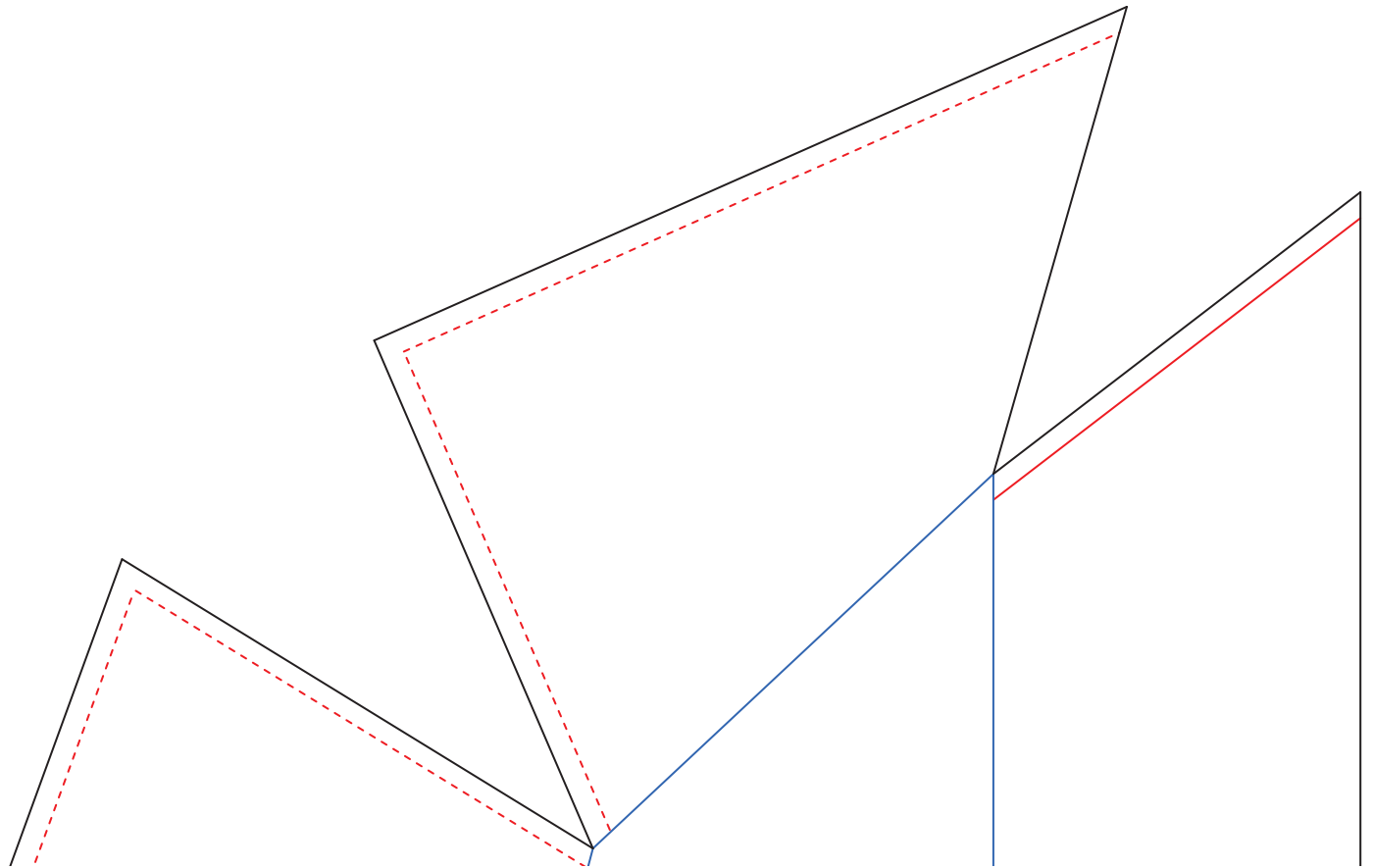
## **AIRCRAFT SPECIFICATIONS:**

LENGTH: 795 mm | 31.30 in  
WING SPAN: 900 mm | 35.43 in  
CG: 22 mm | 0.87 in

## **RECOMMENDED EQUIPMENT:**

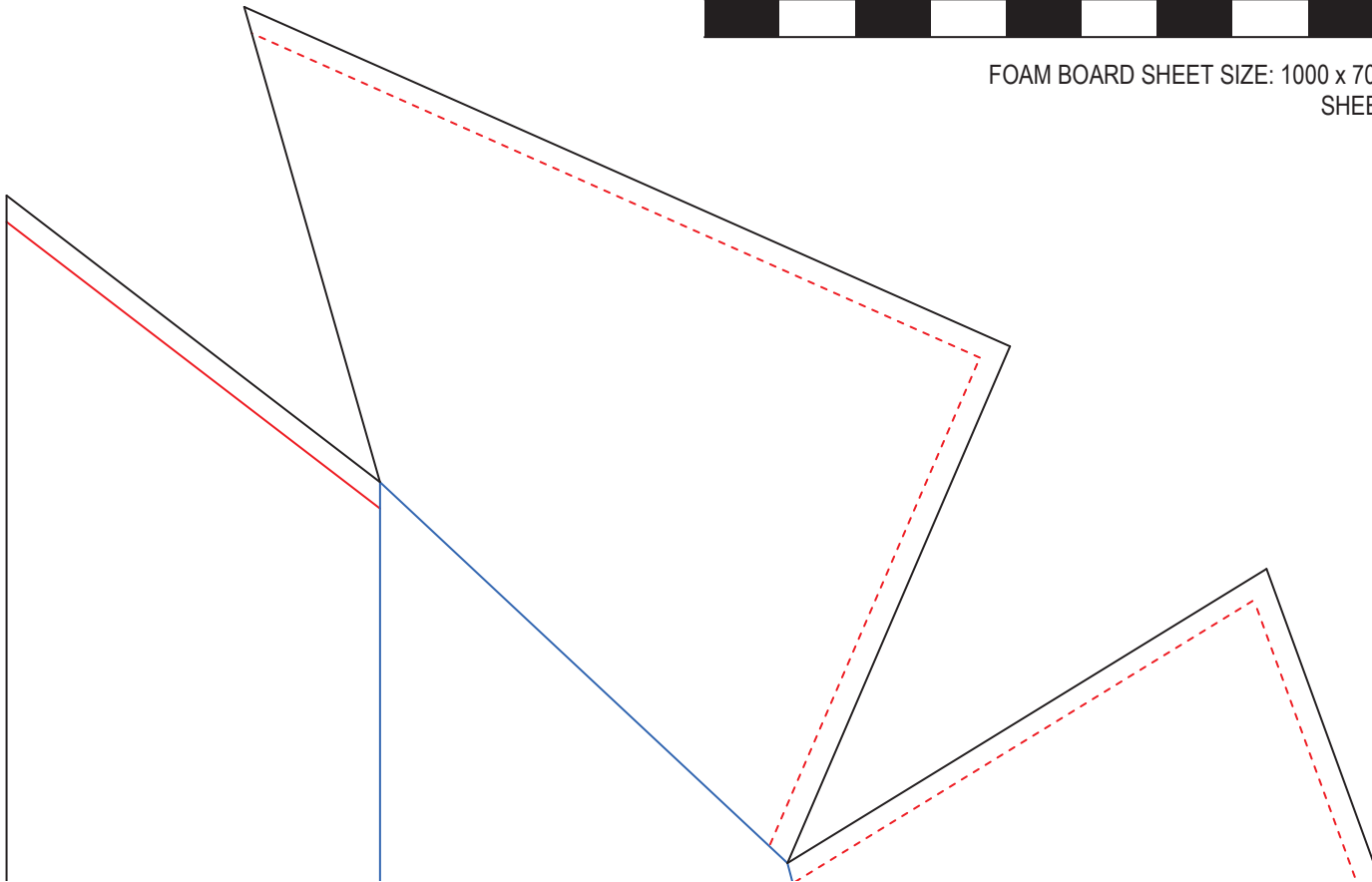
SERVO max. 6: 4.4 g (TGY-1440A)  
MOTOR x 2: DYS 1806, 2300 kv  
ESC x 2: 12 amp  
PROP x 2: 5 X 3 (5030) 1 x CW & 1 x CCW  
BATTERY: 1300 mAh 3s (min)

• 16)





FOAM BOARD SHEET SIZE: 1000 x 700 x 3 mm  
SHEET 1 OF 2

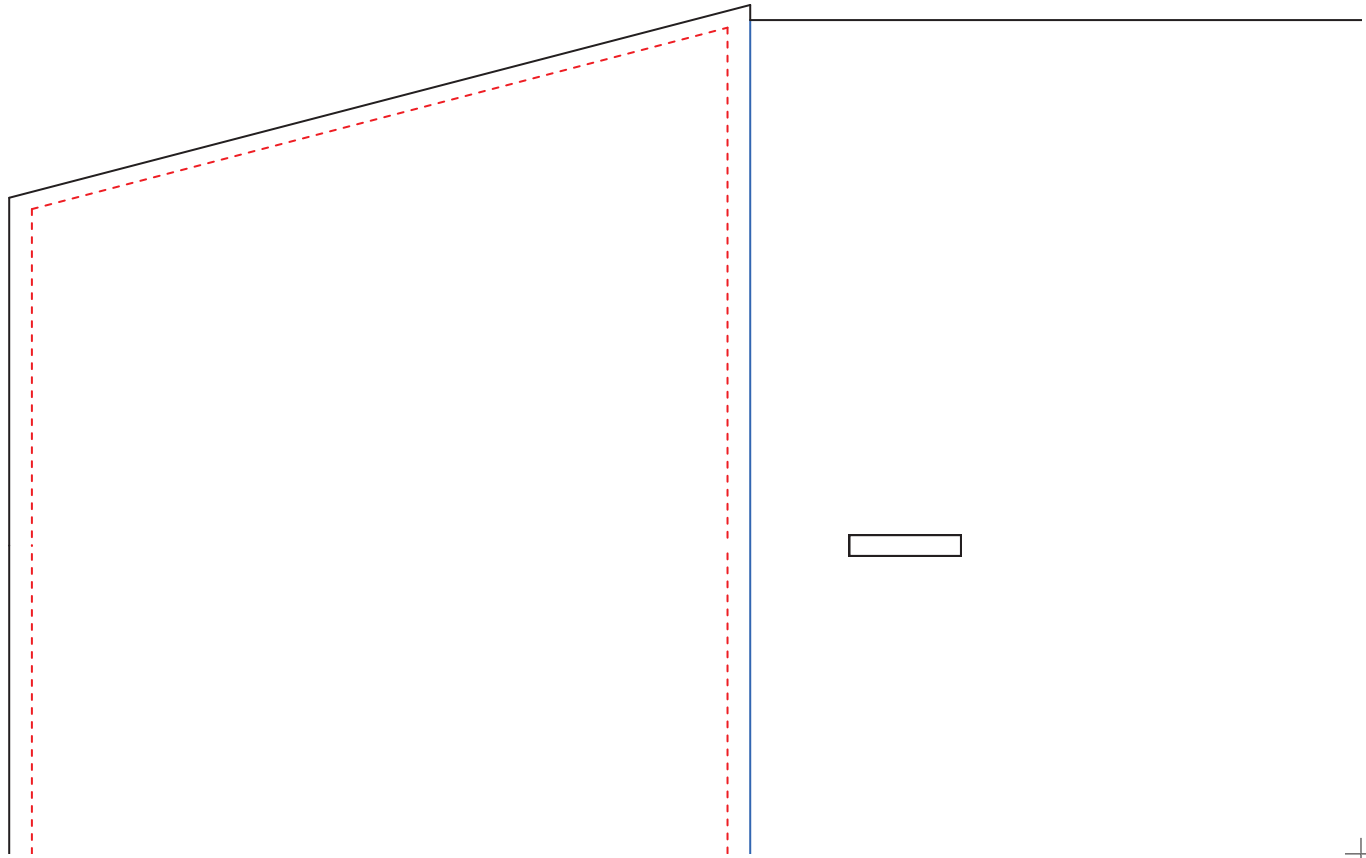


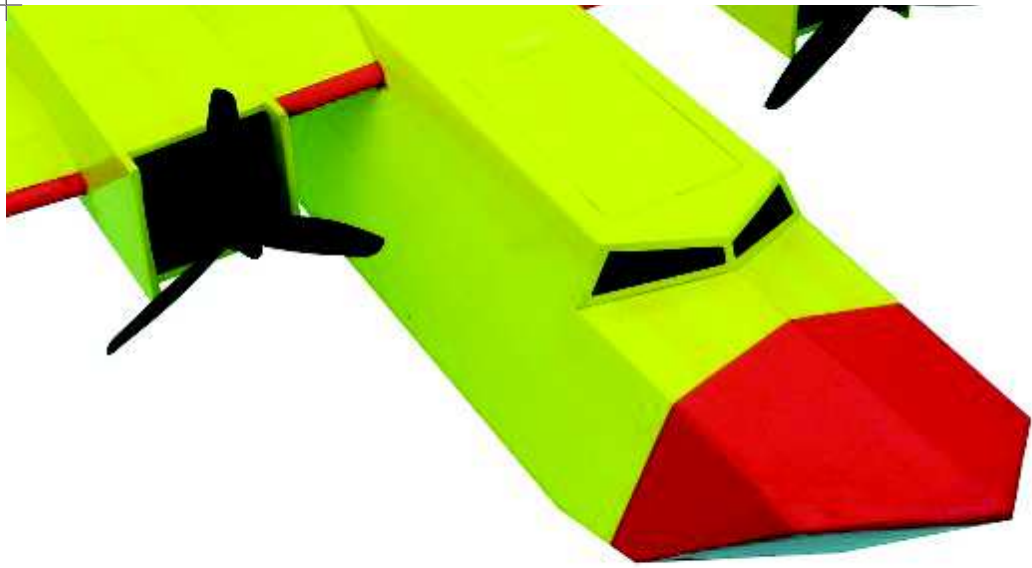
--- BEVEL 45 

— SCORE CUT & CREASE

PART NUMBER

DESCRIPTION





**WEIGHT W/O BATTERY:**

max. 600 g | 21.16 oz

**VARIANTS:**

AILERONS | 1 INSIDE ELEVATOR | NO RUDDER (SERVO x 3)  
AILERONS | 2 OUTSIDE ELEVATORS | NO RUDDER (SERVO x 4)  
AILERONS | 1 INSIDE ELEVATOR | 2 RUDDER (SERVO x 4)  
AILERONS | 2 OUTSIDE ELEVATORS | RUDDER (SERVO x 5)

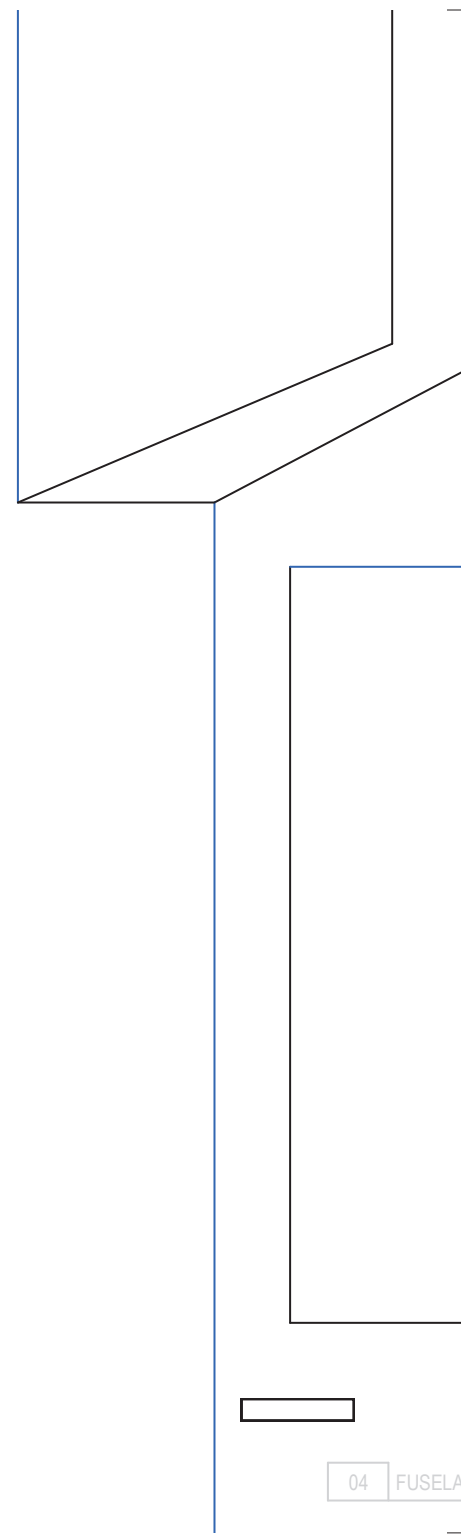
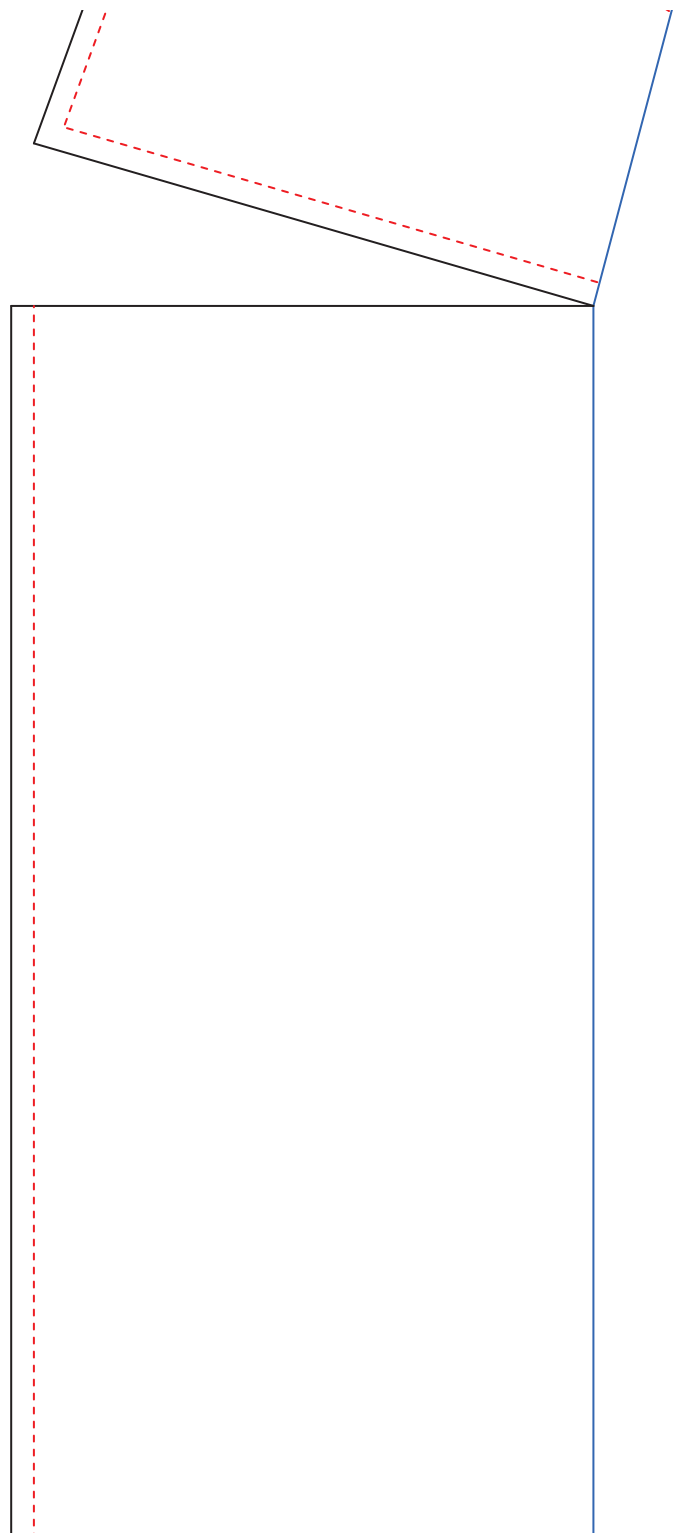
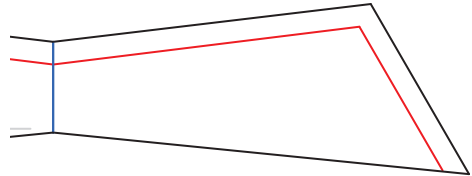
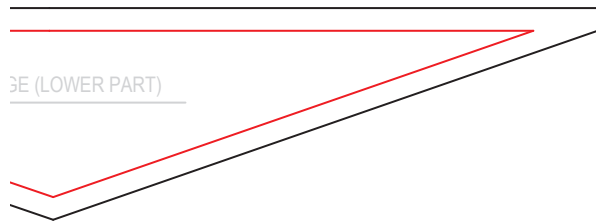
01 FUSELAGE (BATTERY / ELECTRONICS TRAY)

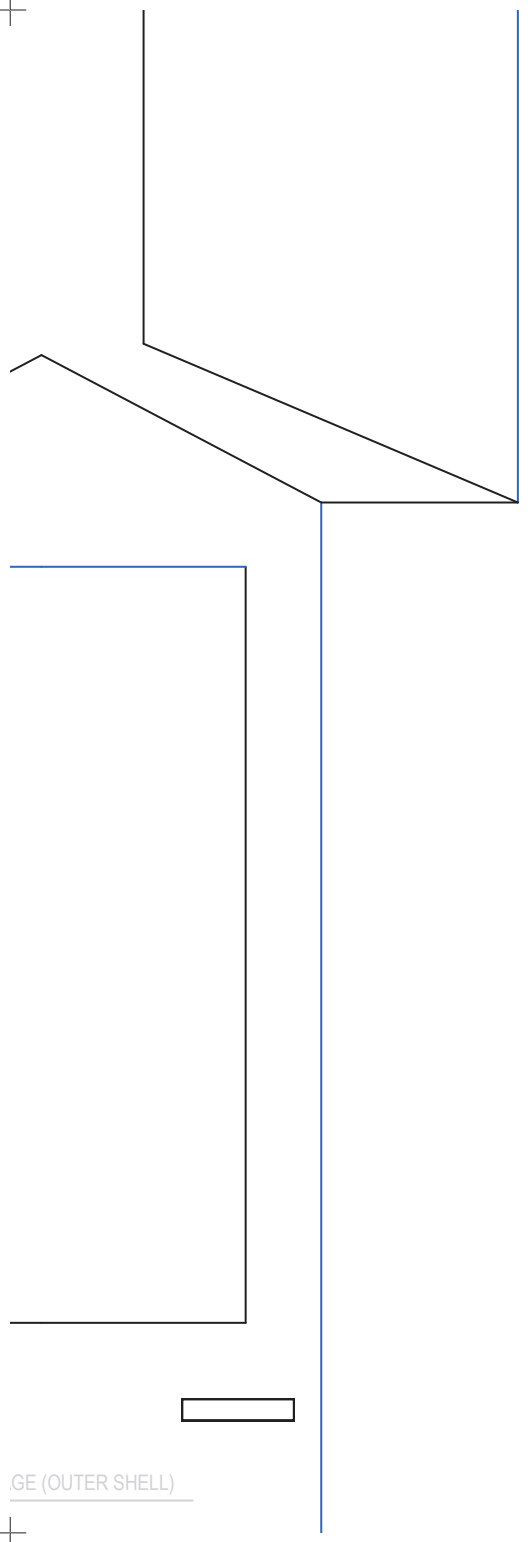
07 FUSELAGE (NOSE)

06 FUSELAGE (WINDOW)

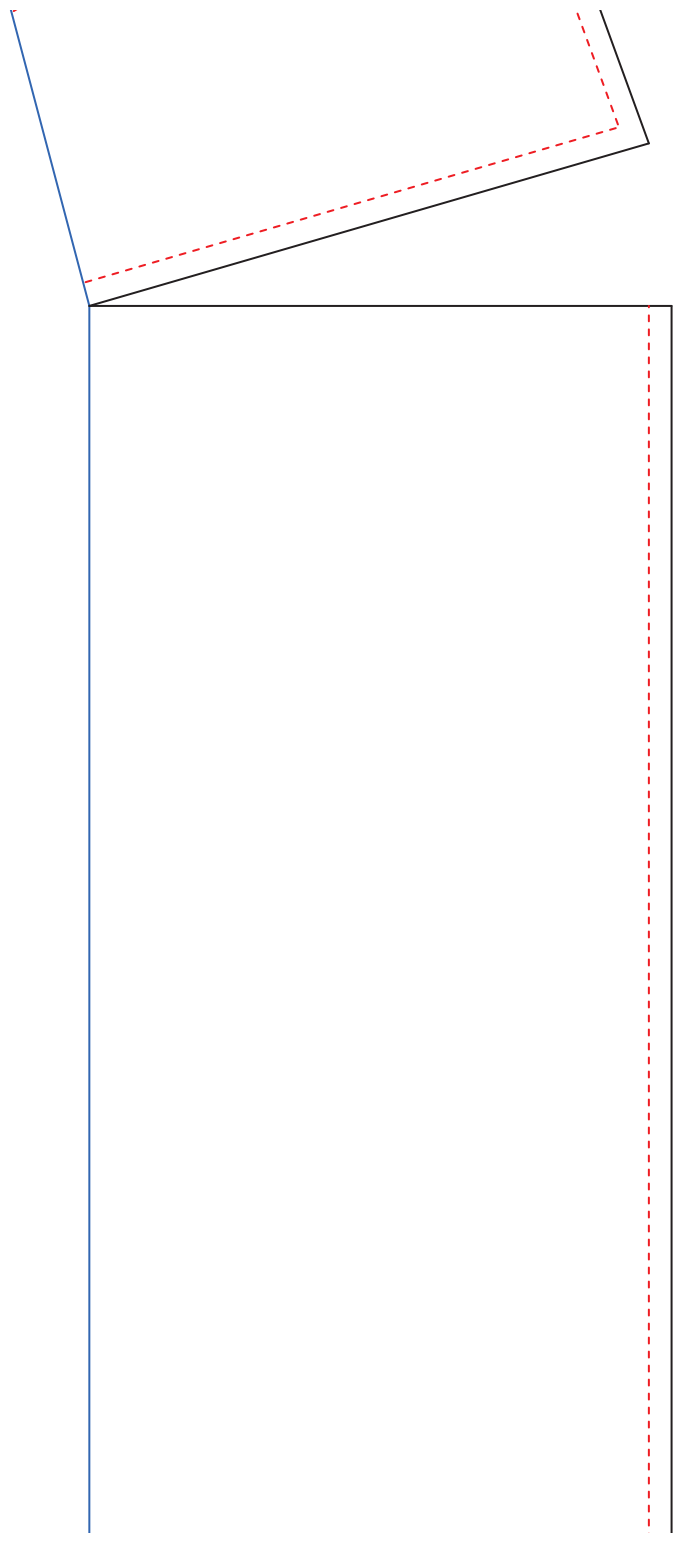
05 FUSELAGE (COVER STOPPER)

3)  
O x 4)  
OR 5)  
5 OR 6)

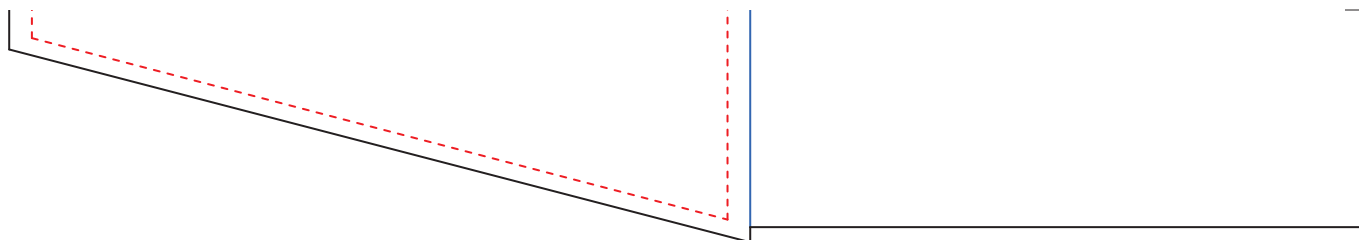




GE (OUTER SHELL)



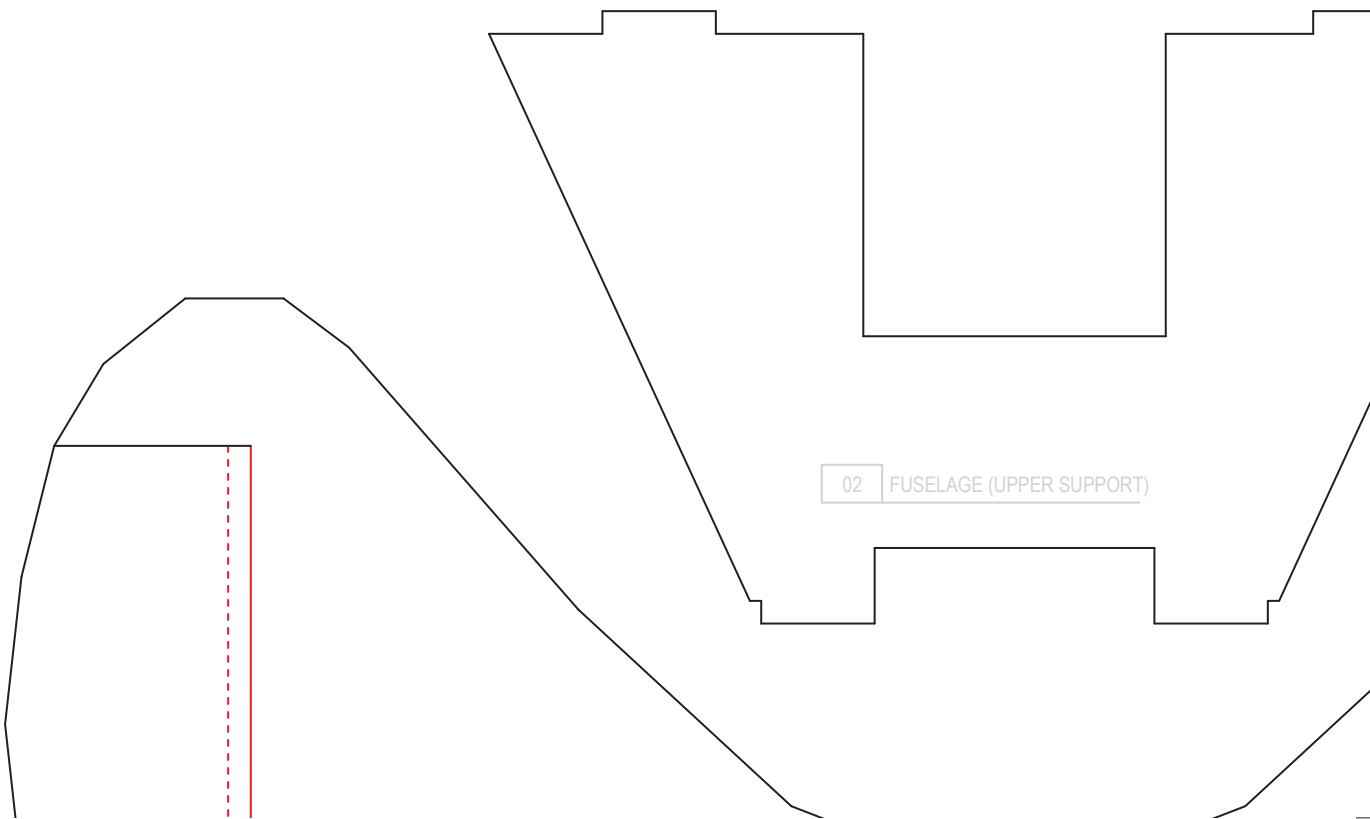
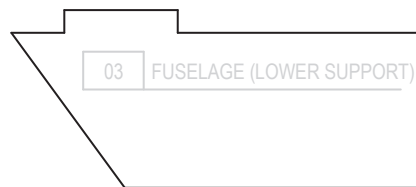




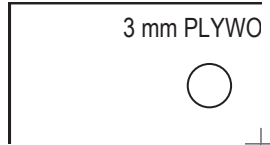
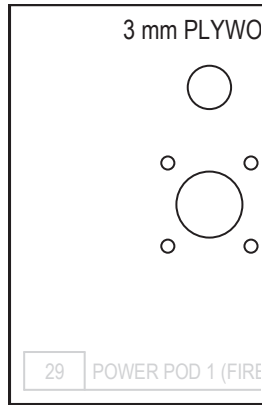
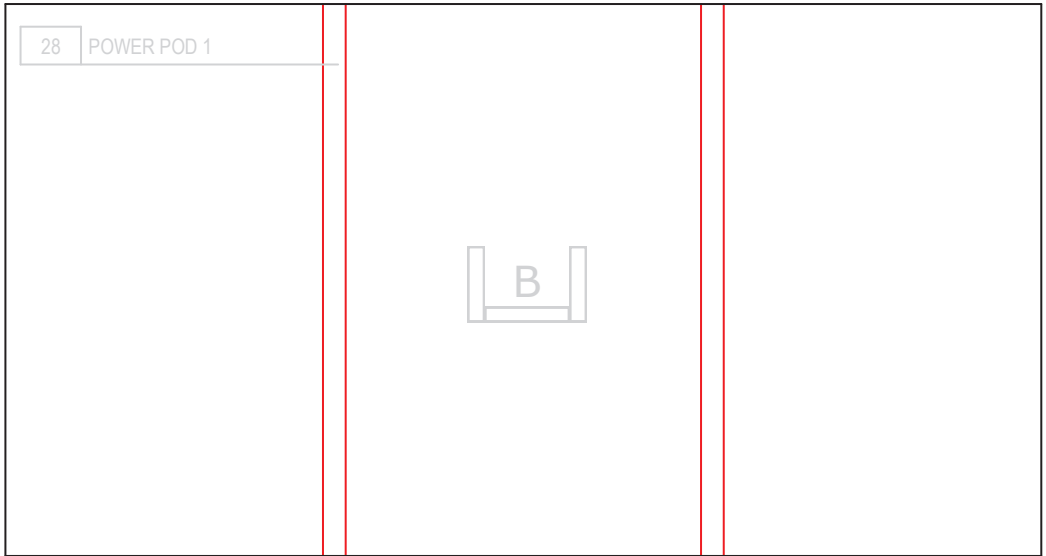
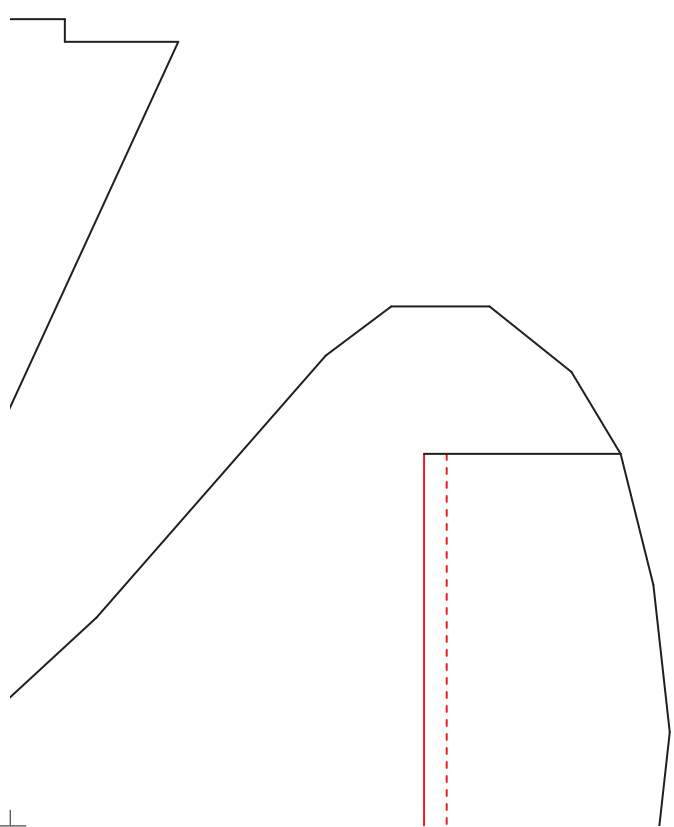
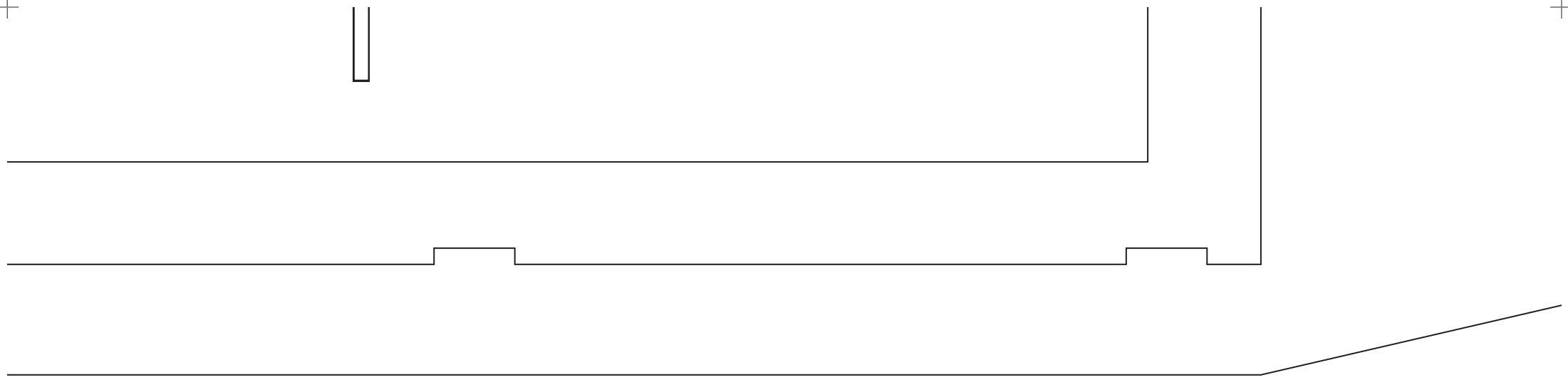
STICKER

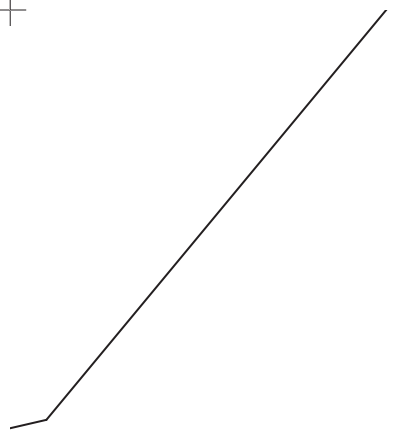
AIL-L	AIL-L	AIL-R	AIL-R
ESC-L	ESC-L	ESC-R	ESC-R
ELV-L	ELV-L	ELV-R	ELV-R
RUD-L	RUD-L	RUD-R	RUD-R

35 SERVO EXTENSION LABEL



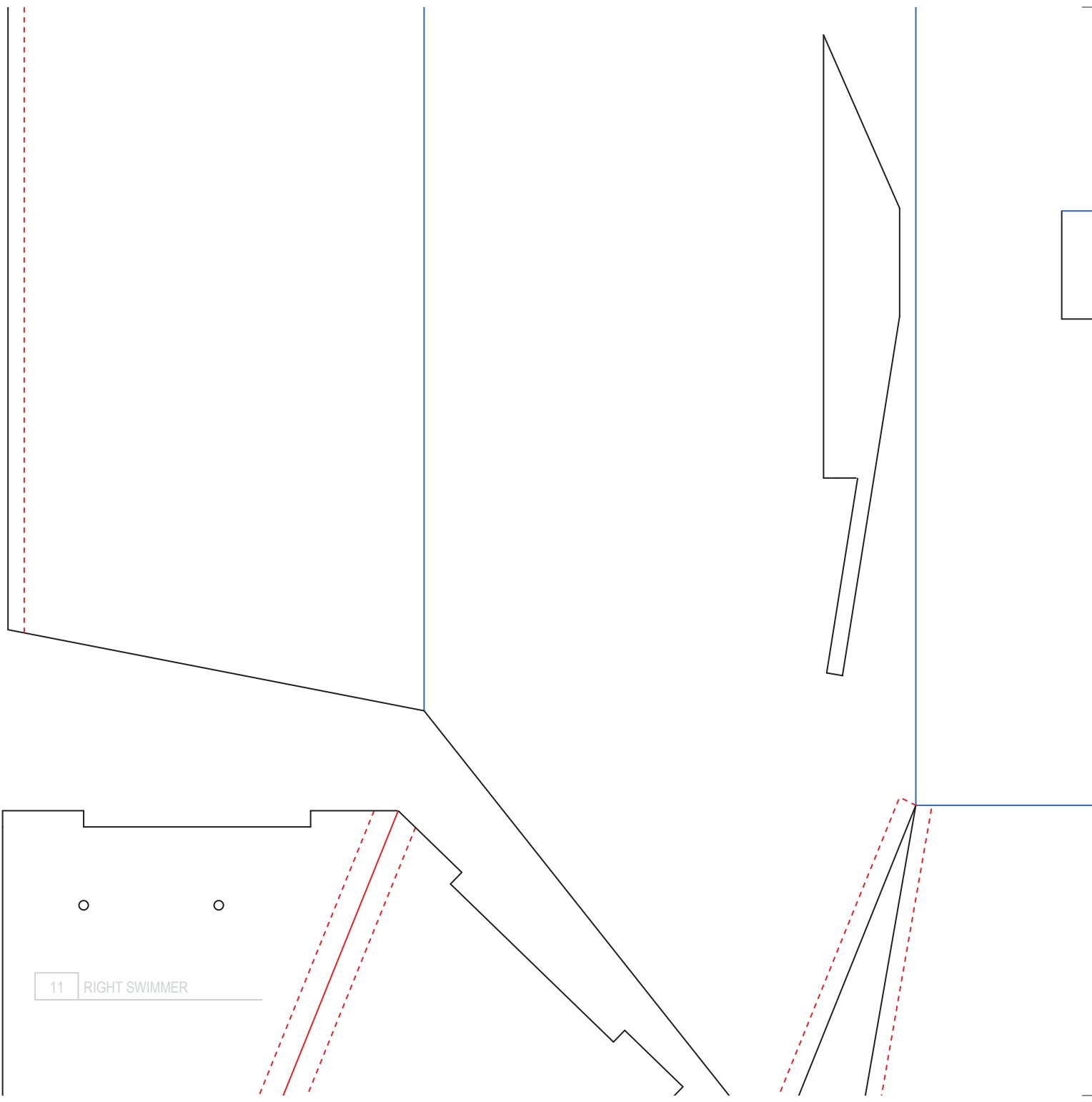
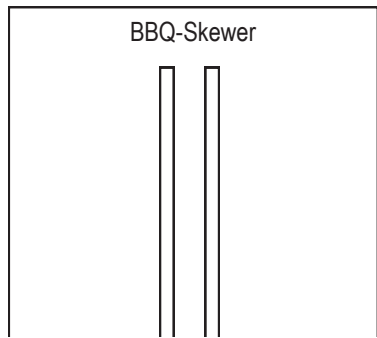
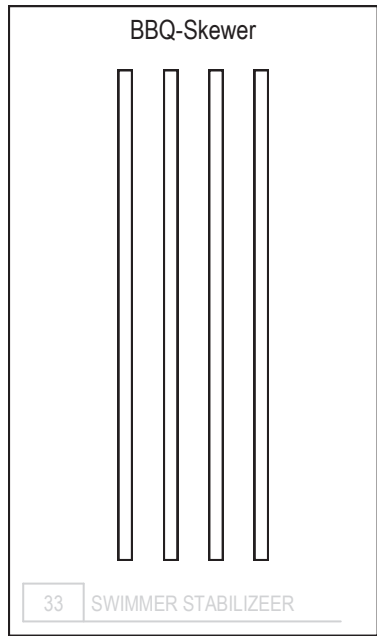
02 FUSELAGE (UPPER SUPPORT)



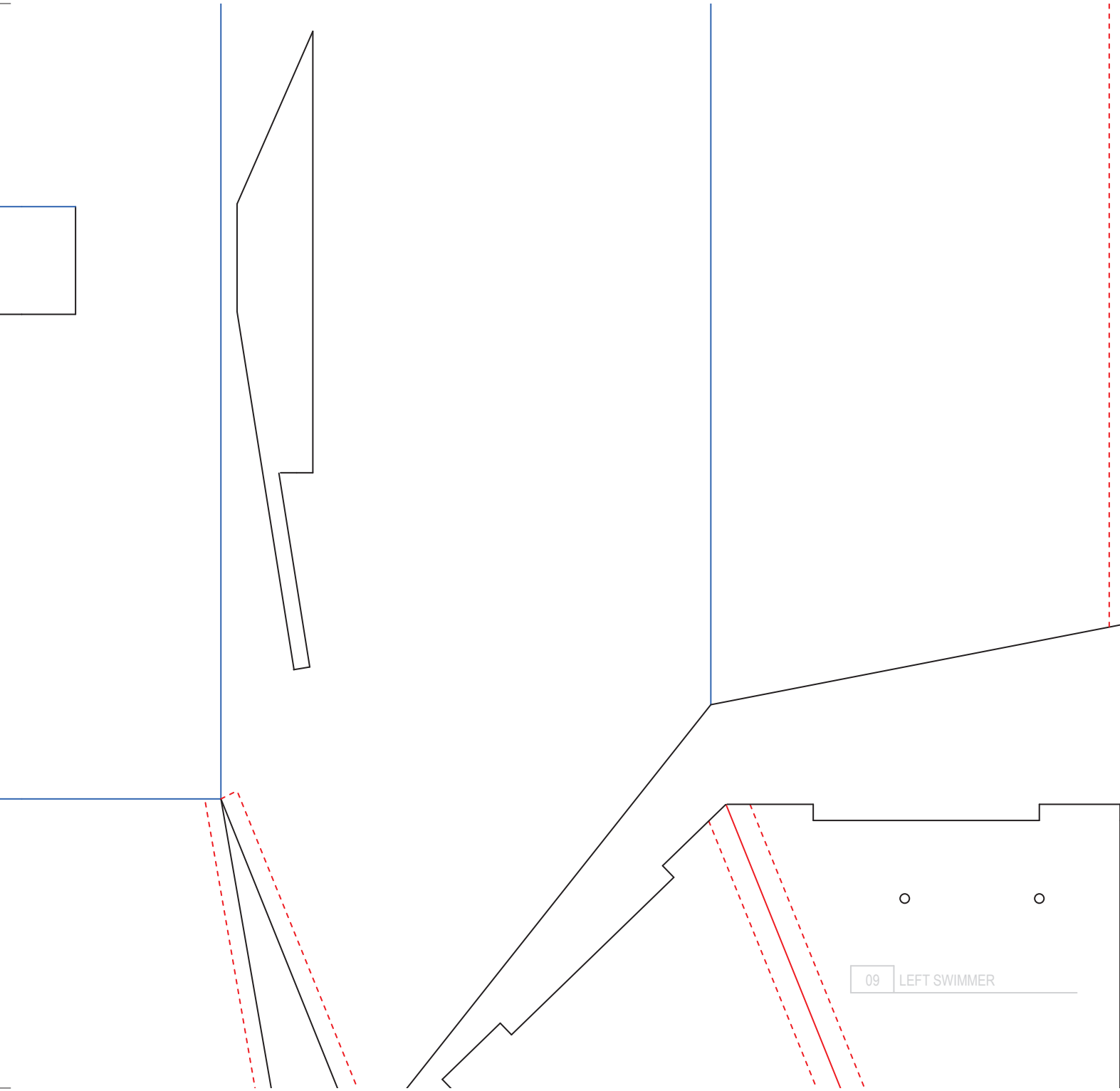


OD  
EWALL)

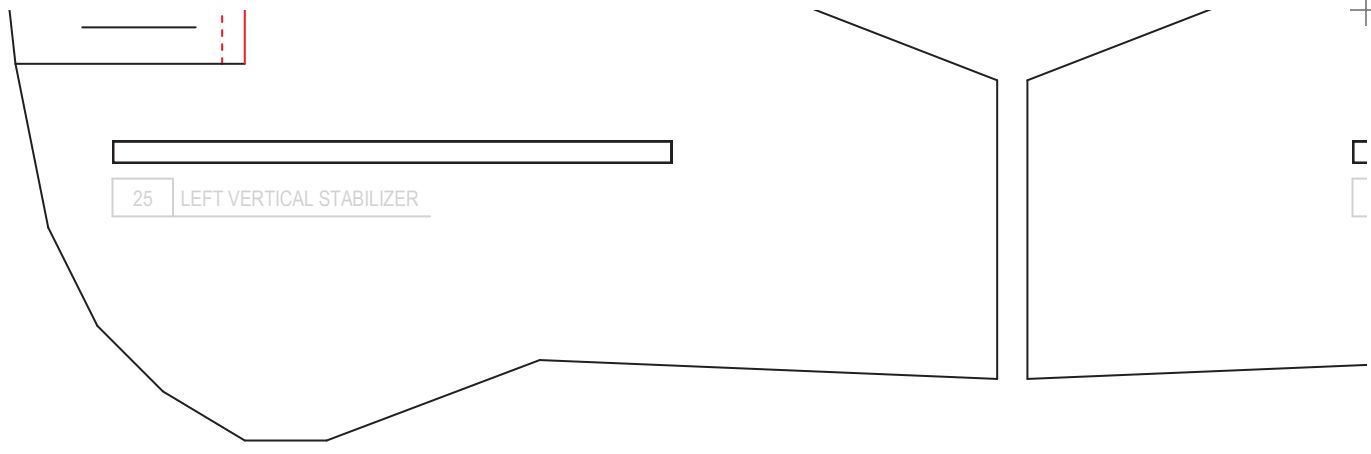
OD



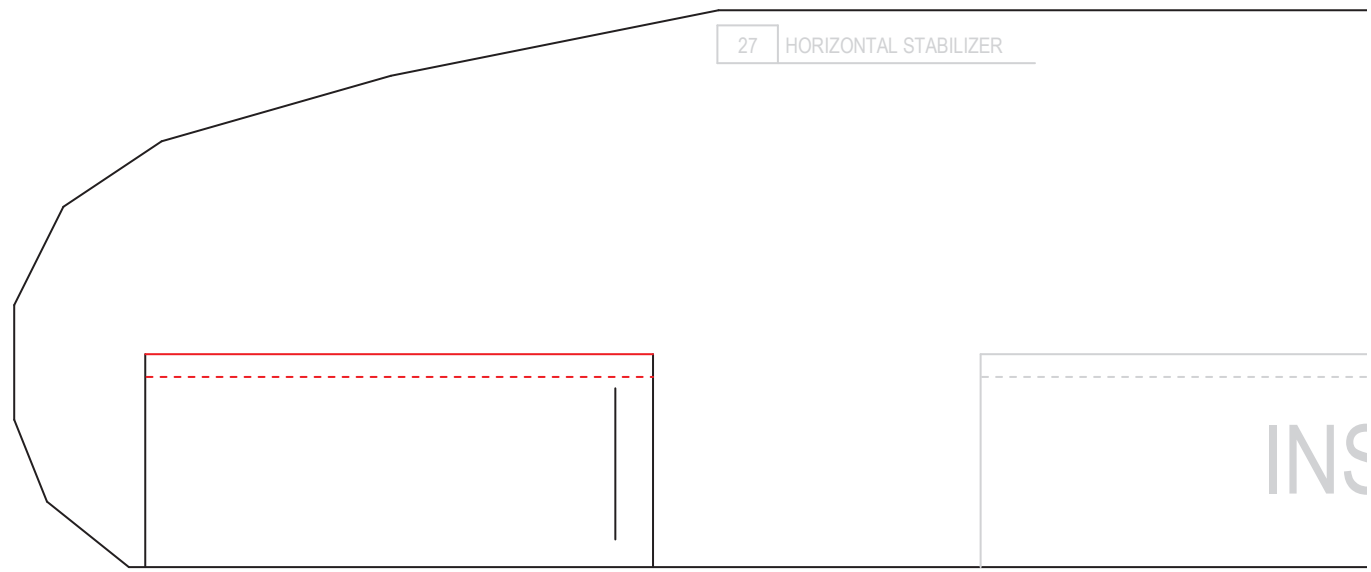
11 RIGHT SWIMMER



09 LEFT SWIMMER



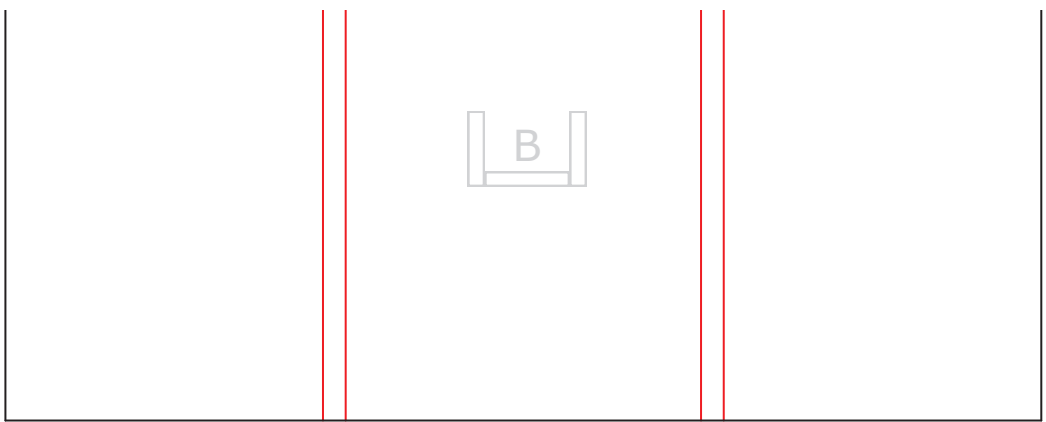
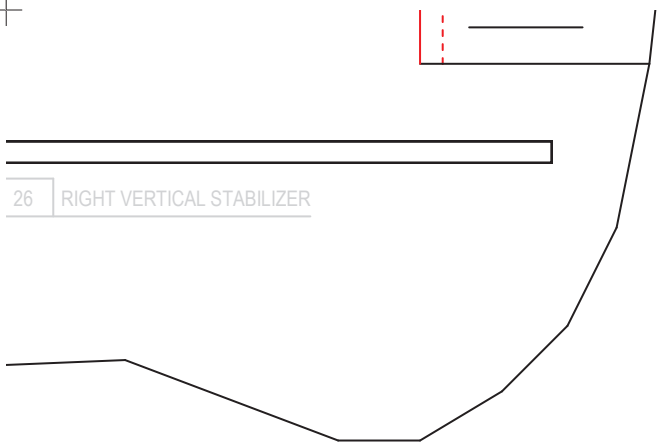
25 LEFT VERTICAL STABILIZER



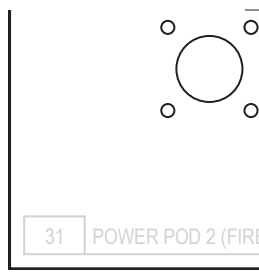
27 HORIZONTAL STABILIZER

INS

26 RIGHT VERTICAL STABILIZER



31 POWER POD 2 (FIRE

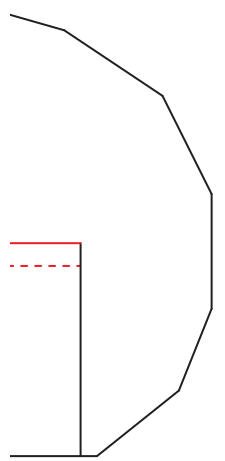


SIDE ELEVATOR (ALTERNATIV)

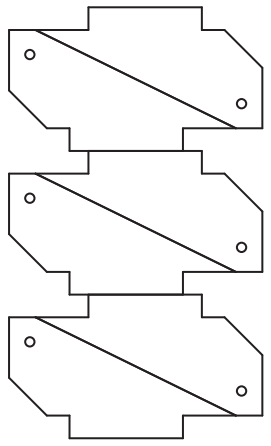


WALL)

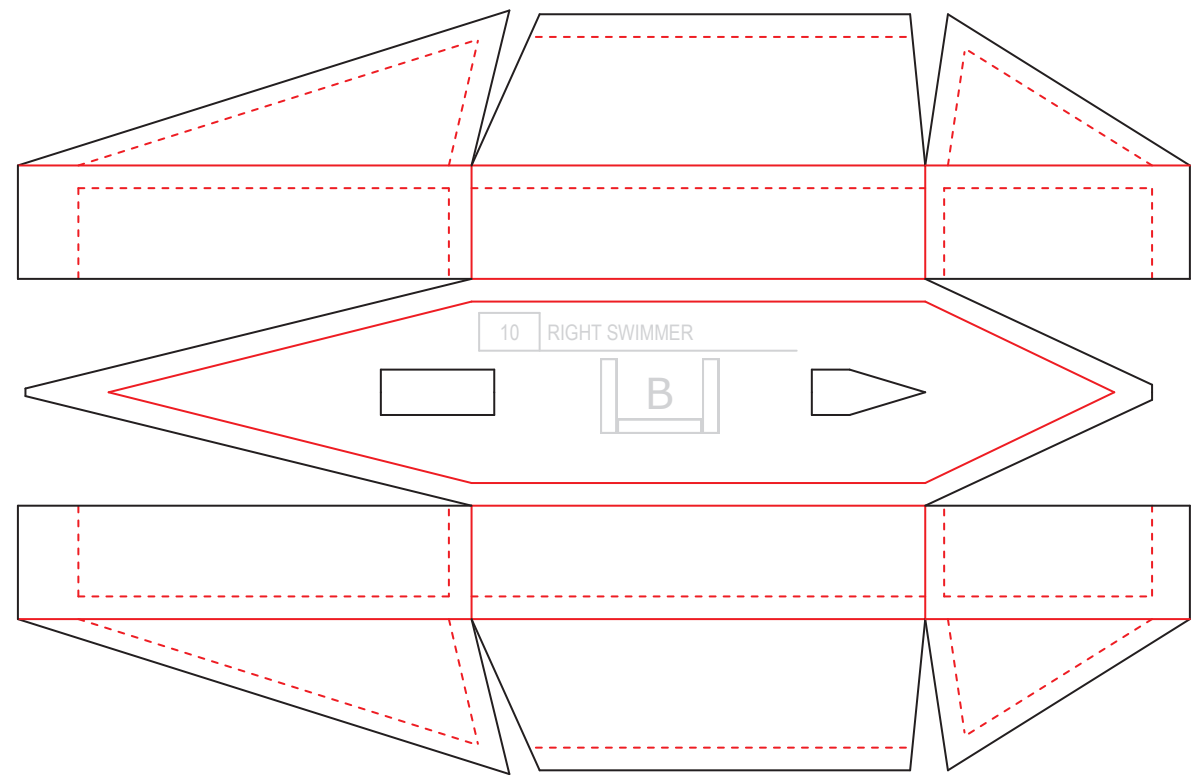
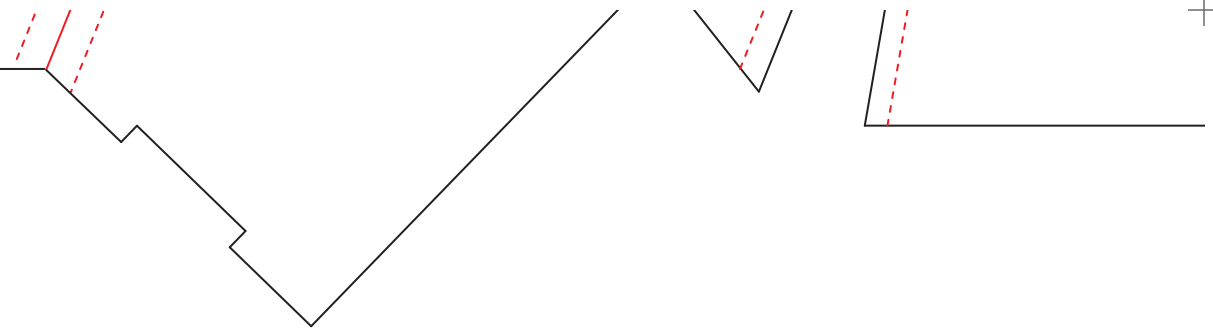
32 POWER POD PINS



SMALL PLASTIC CARD

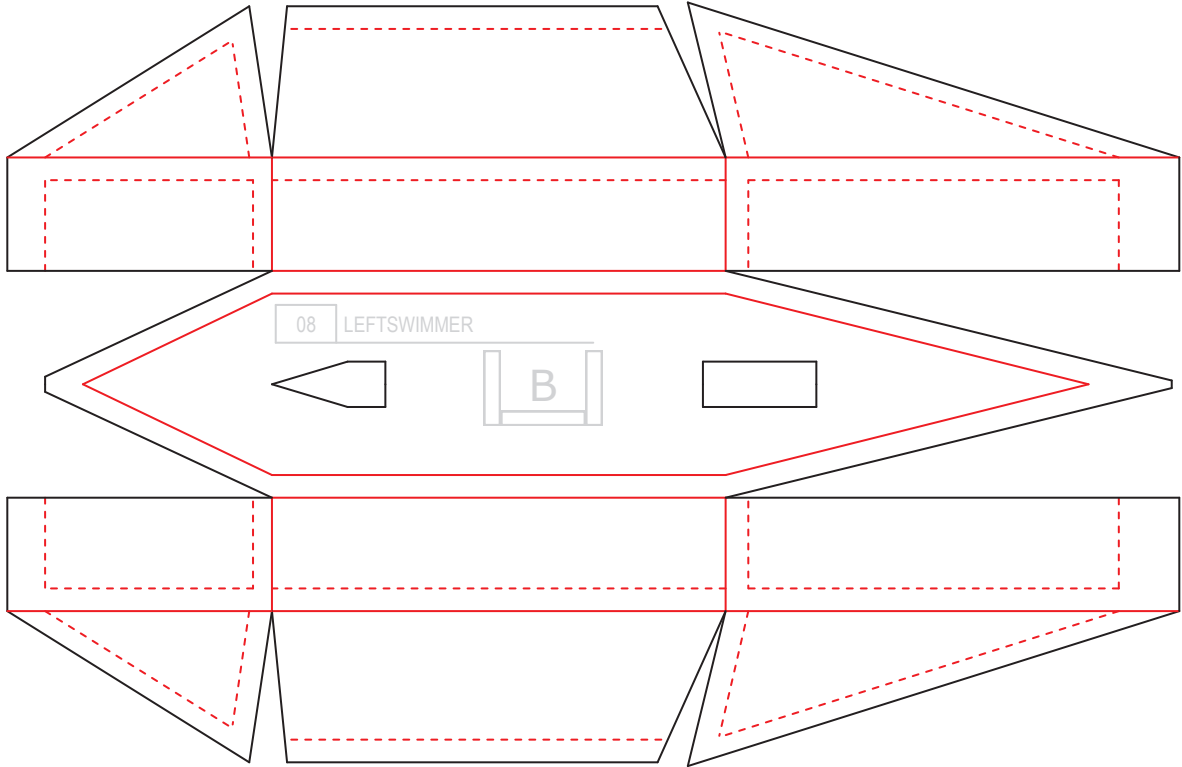
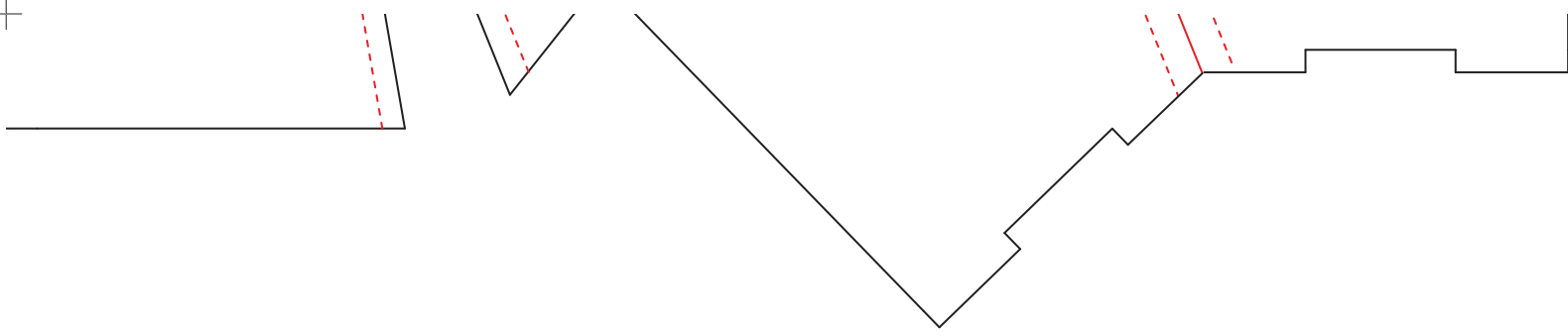


33 CONTROL HORNS



10 RIGHT SWIMMER

B

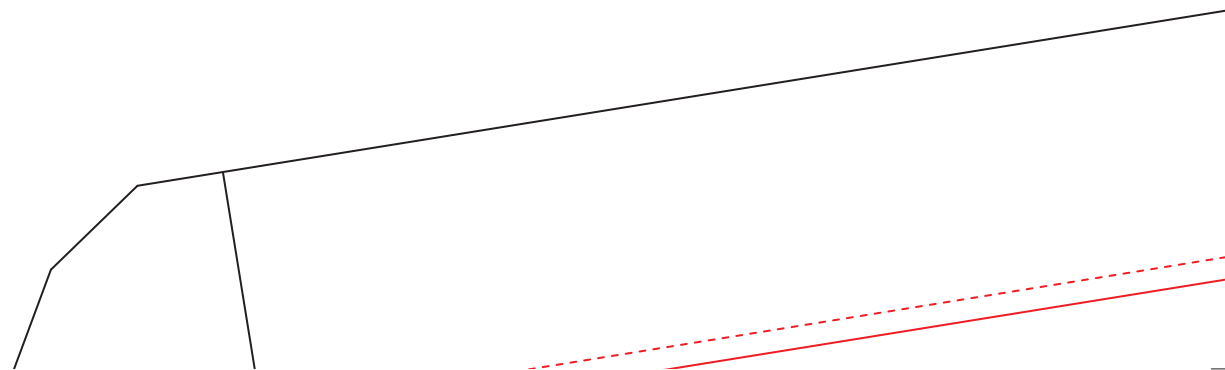




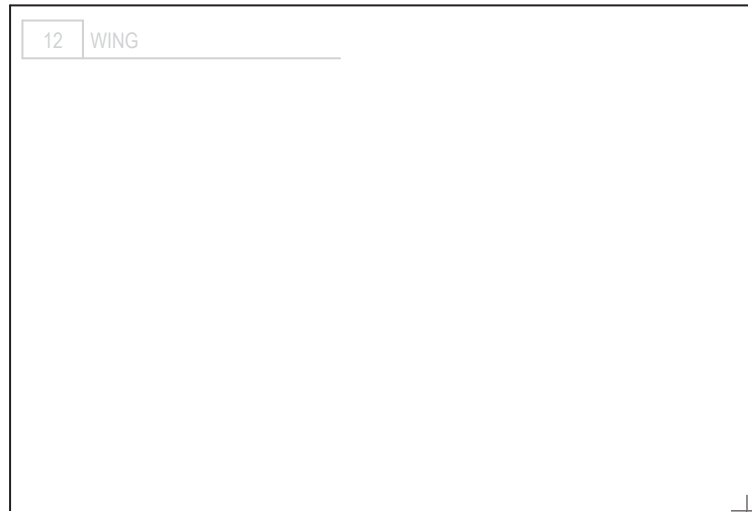
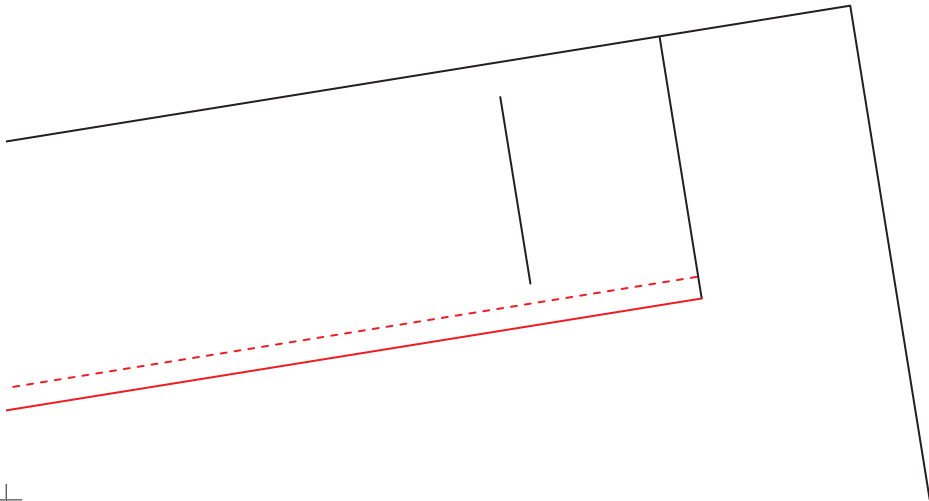


Sea

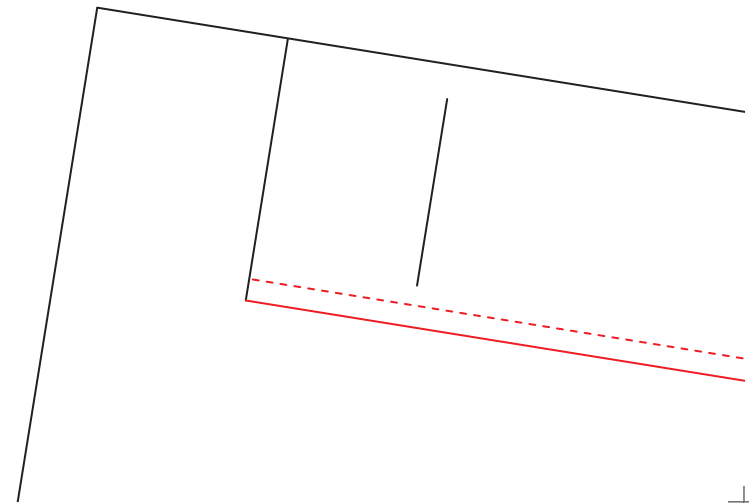
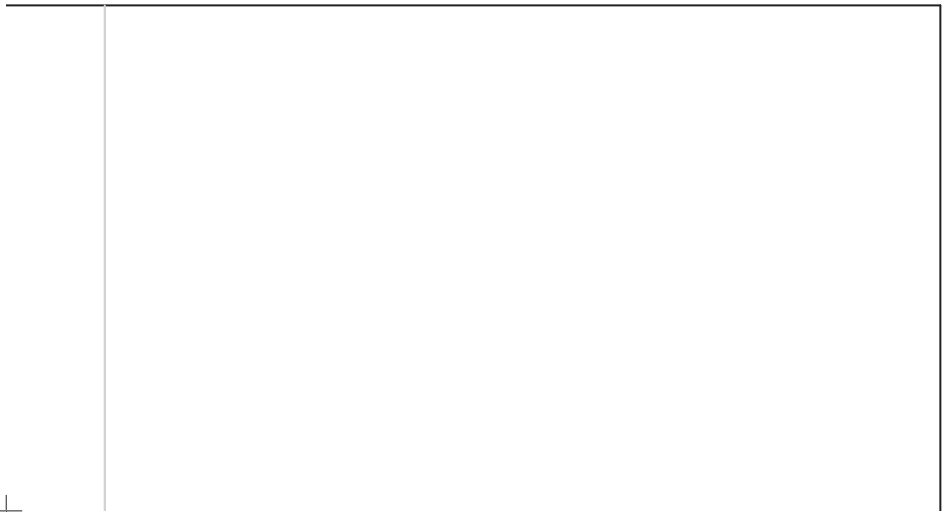
**Airc Pirates - the sky is our ocean!**



# a Duck (Conwing L.



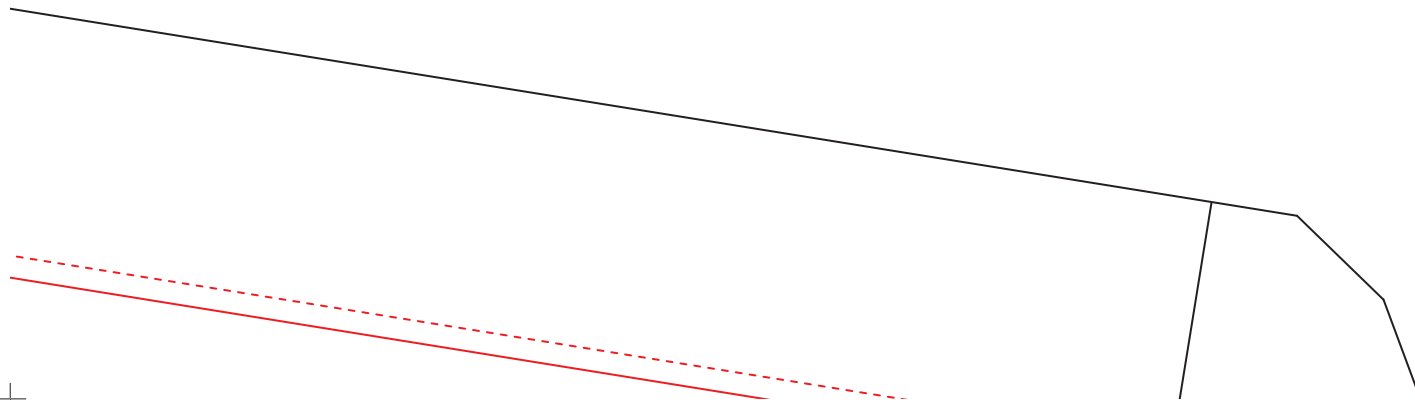
16)

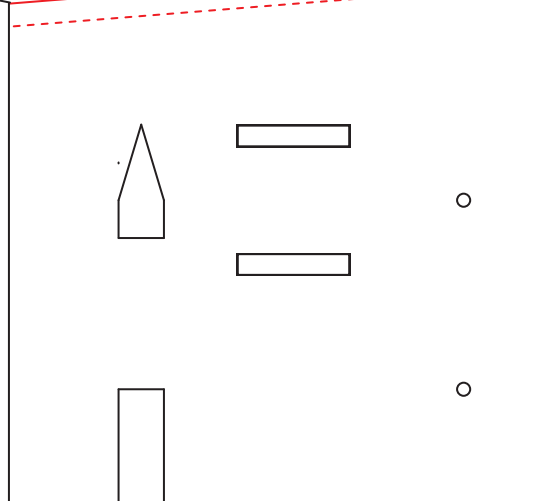
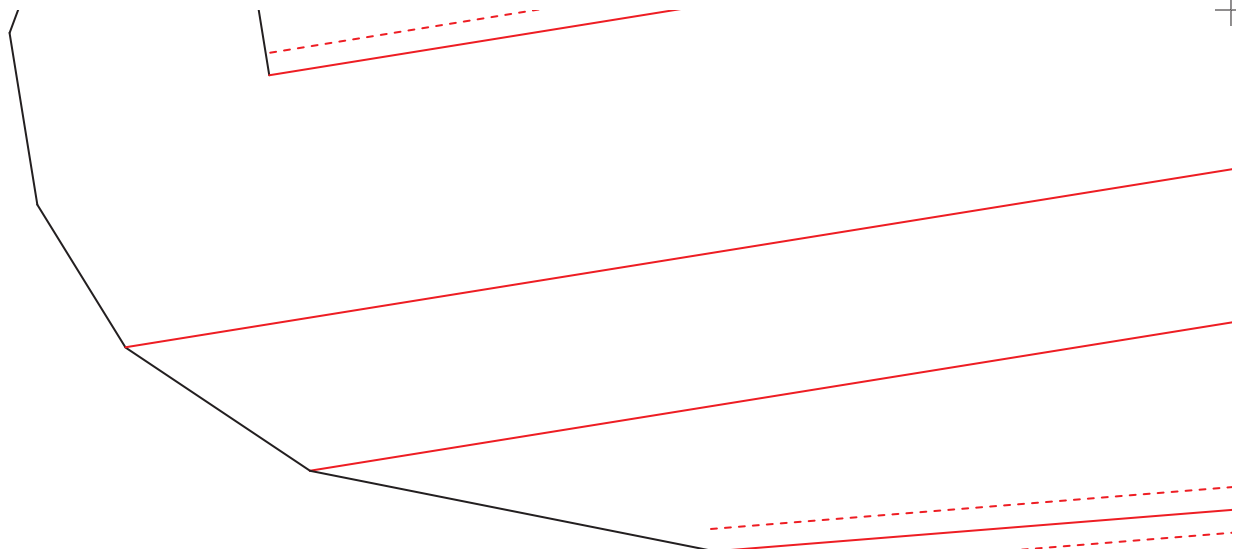




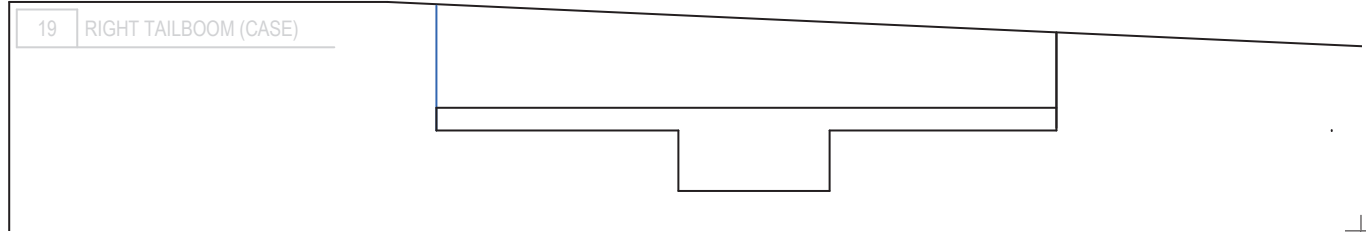
FOAM BOARD SHEET SIZE: 1000 x 700 x 3 mm  
SHEET 2 OF 2

SIDE VIEW OF THE WING

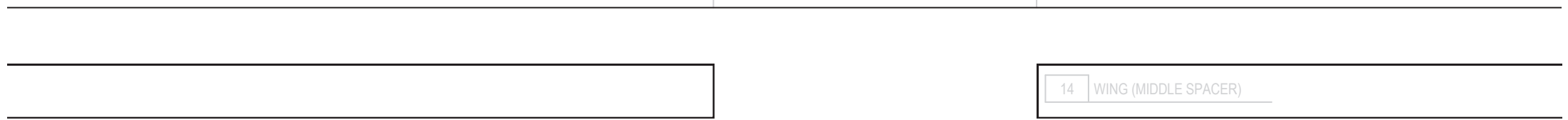
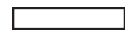
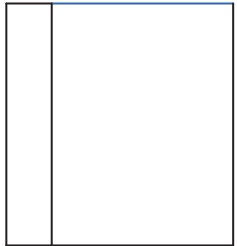
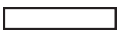
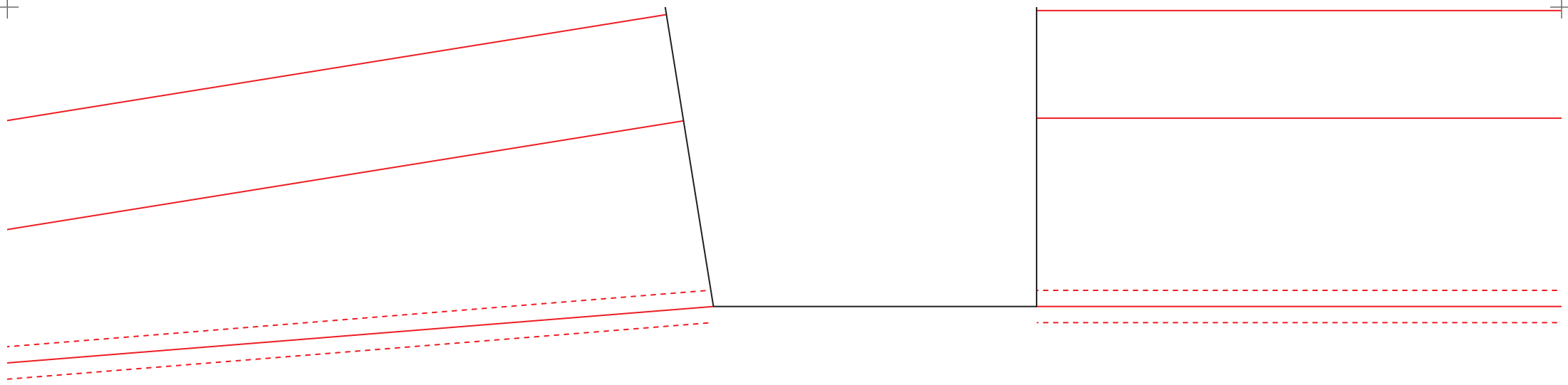




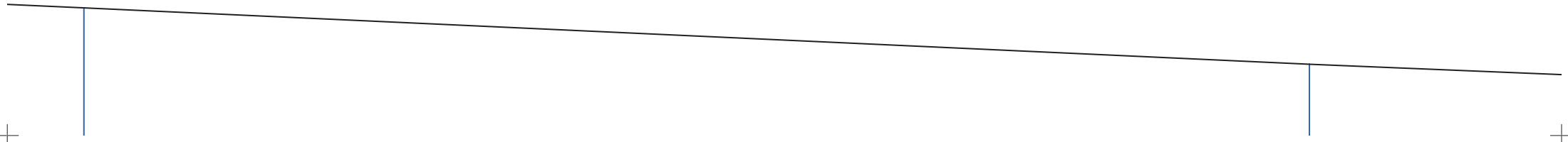
13 WING (LEFT SPACER)

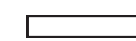
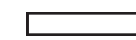
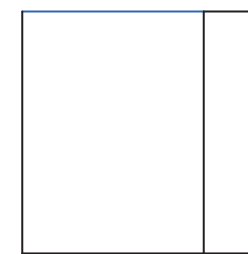
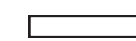
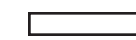
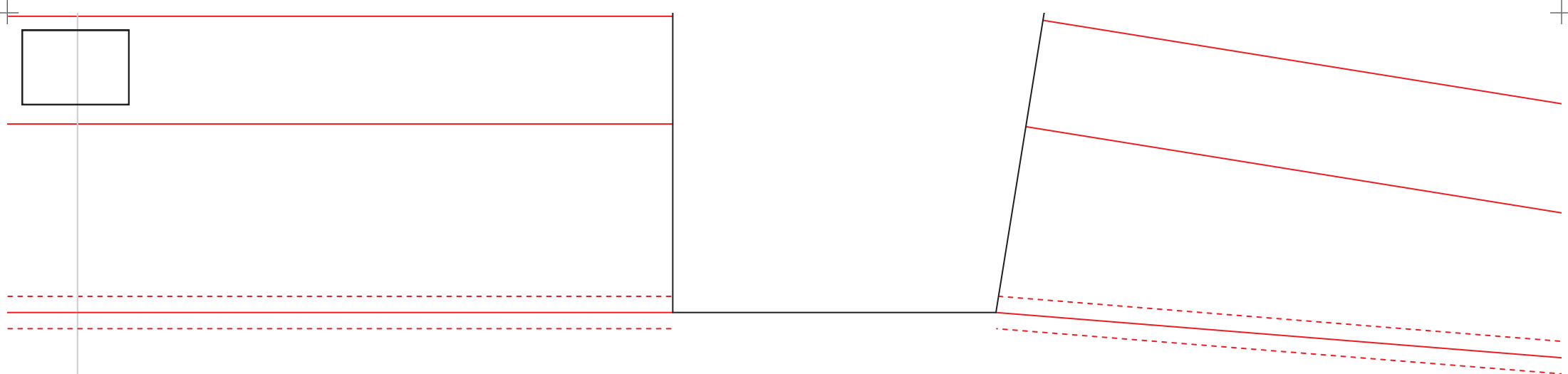


19 RIGHT TAILBOOM (CASE)

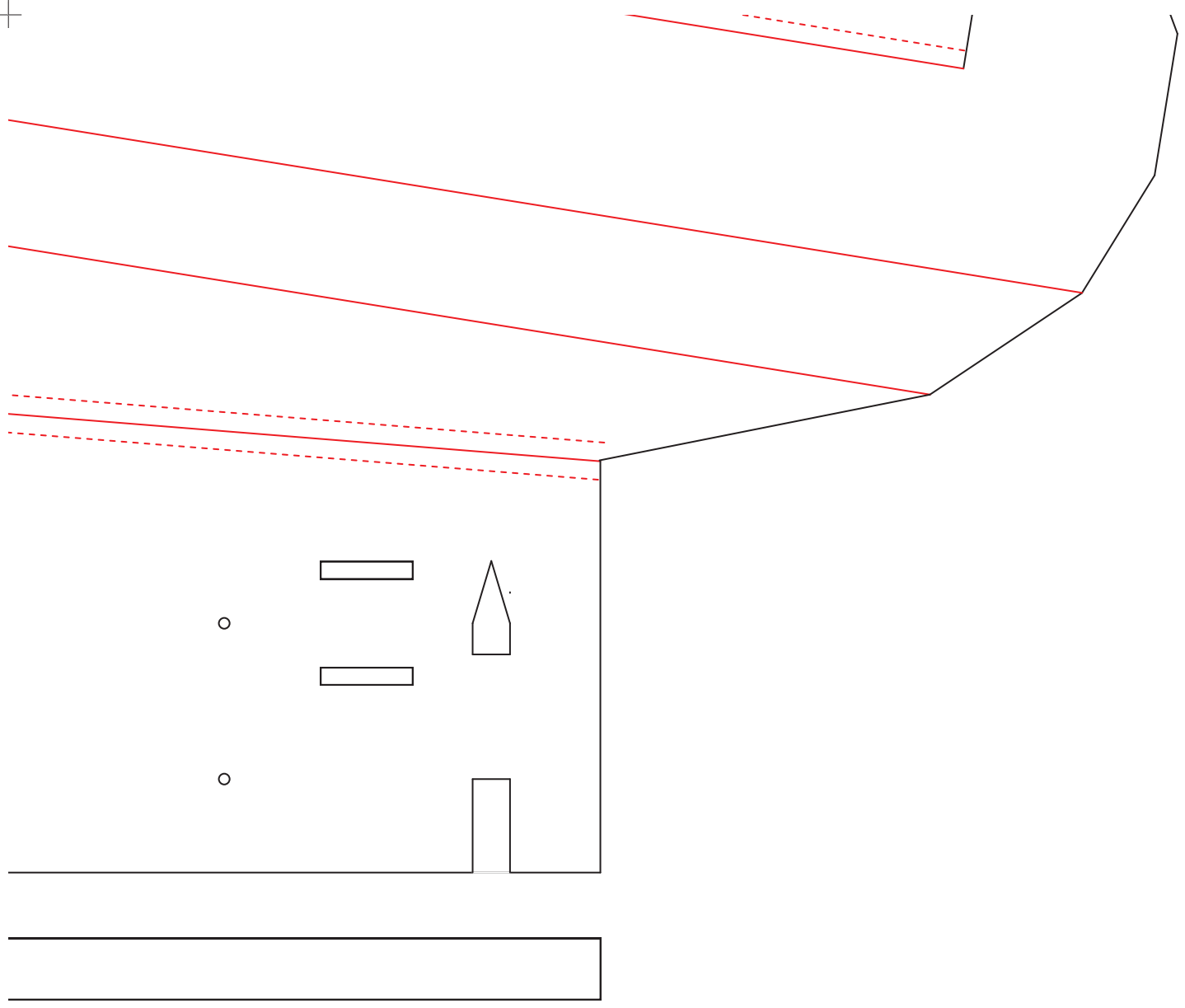


14 WING (MIDDLE SPACER)

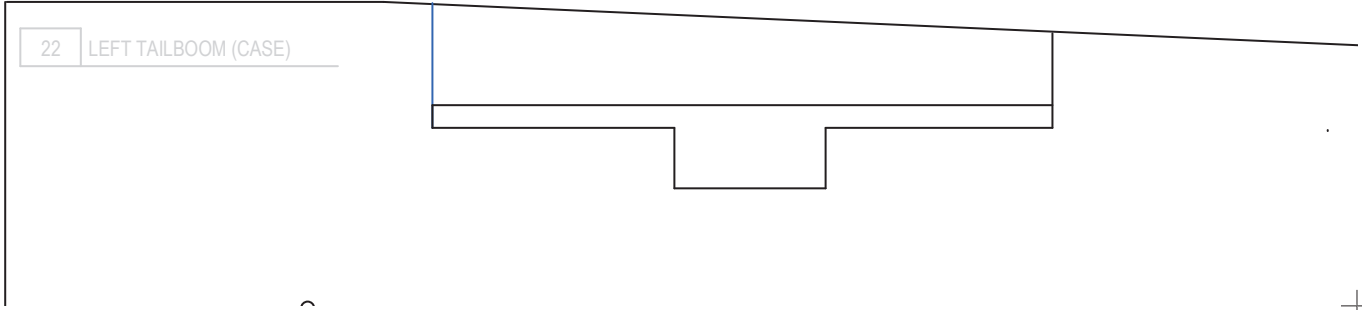
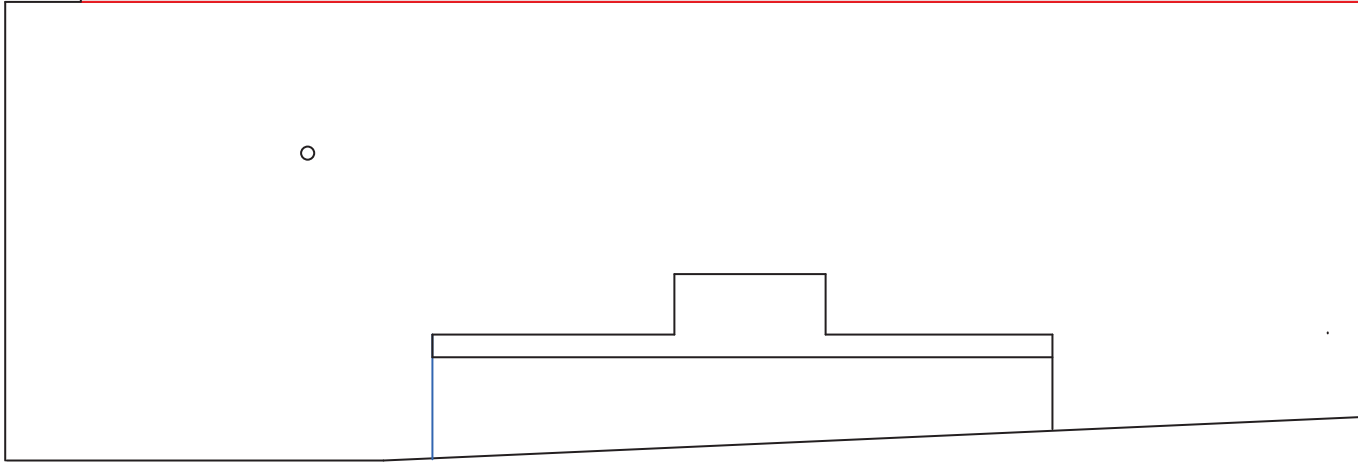
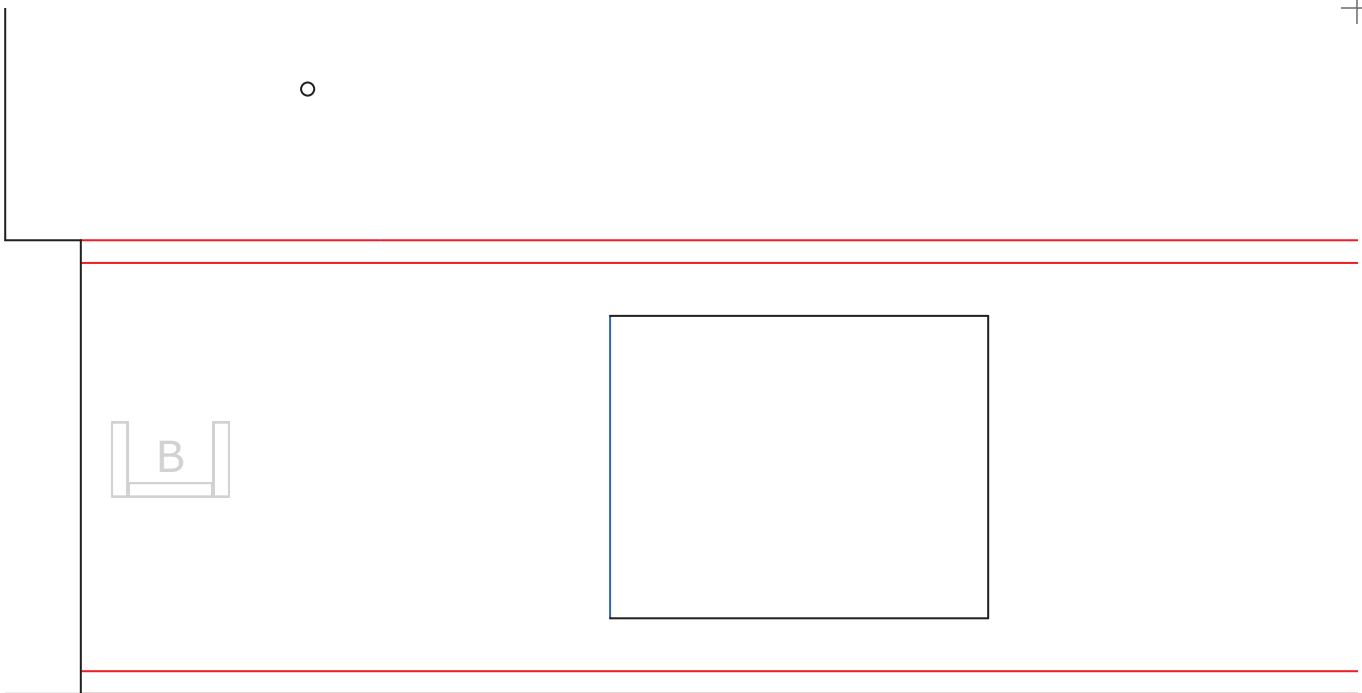




15 WING (RIGHT SPACER)







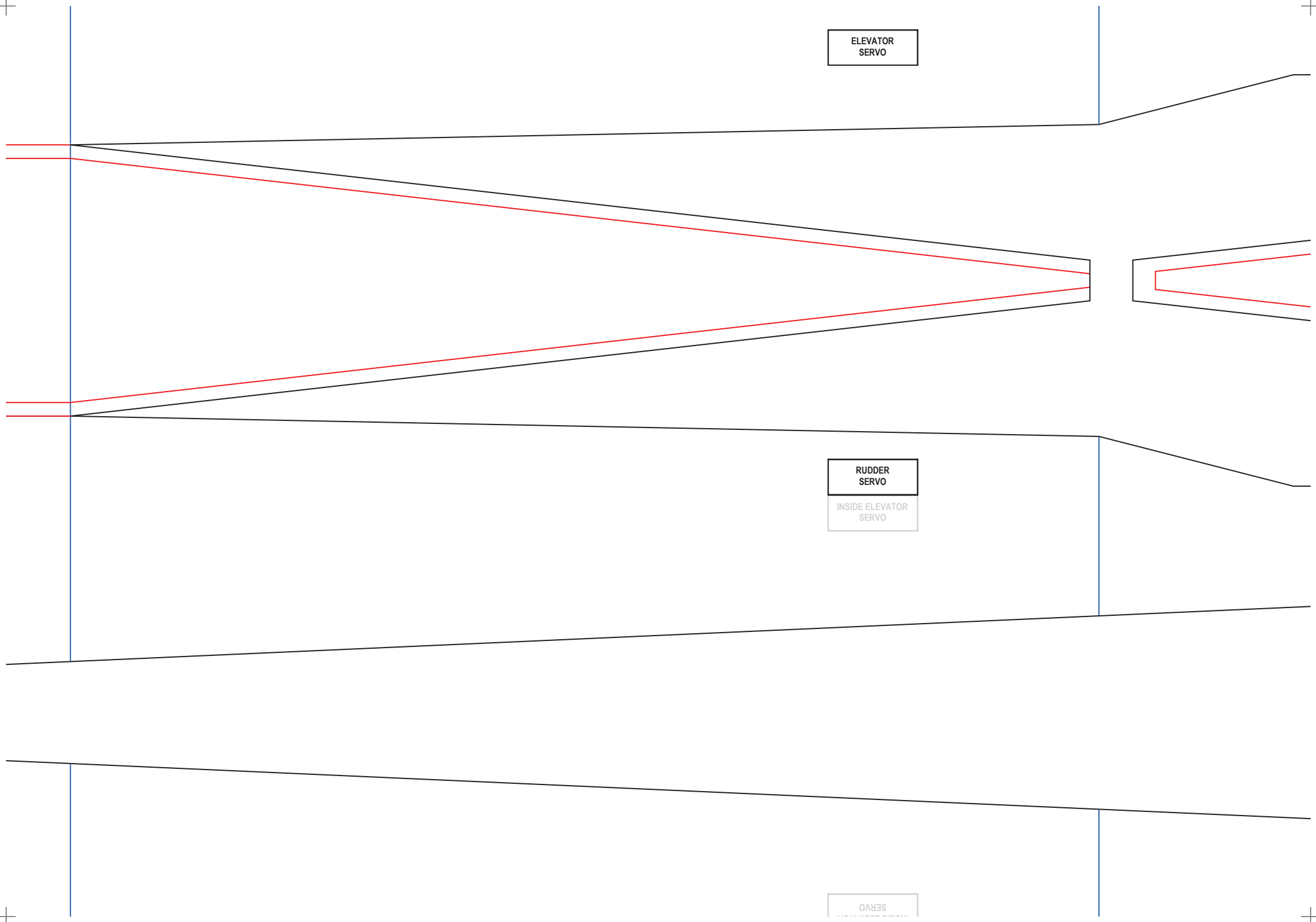
22 LEFT TAILBOOM (CASE)

ELEVATOR  
SERVO

RUDDER  
SERVO

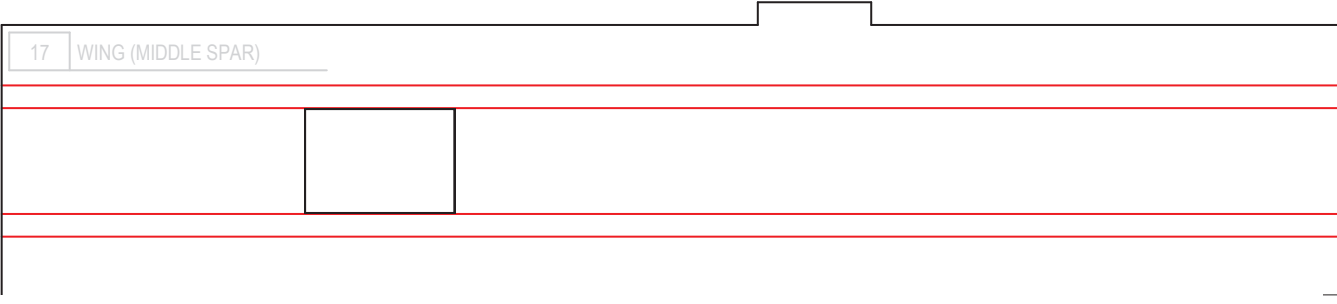
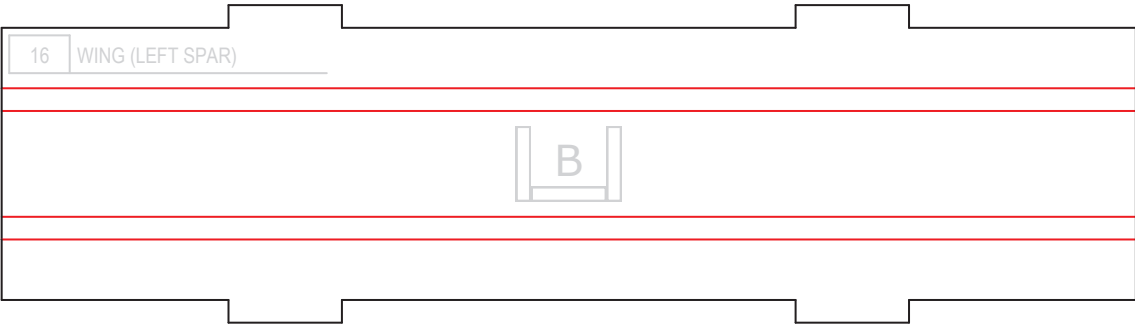
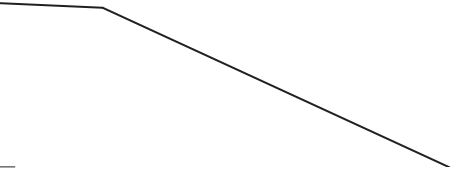
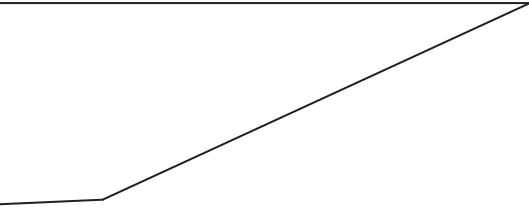
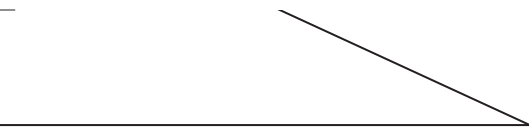
INSIDE ELEVATOR  
SERVO

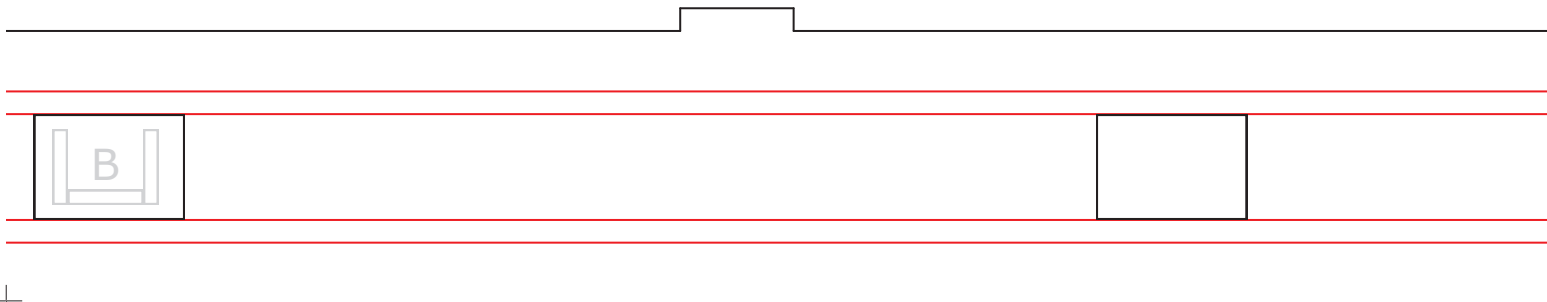
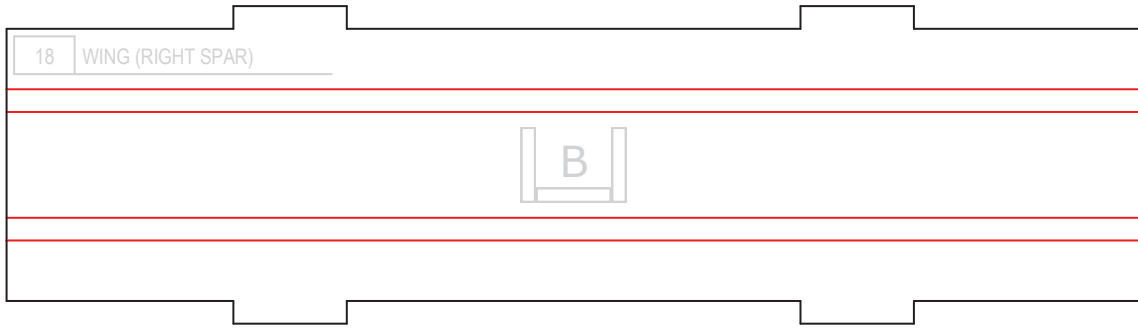
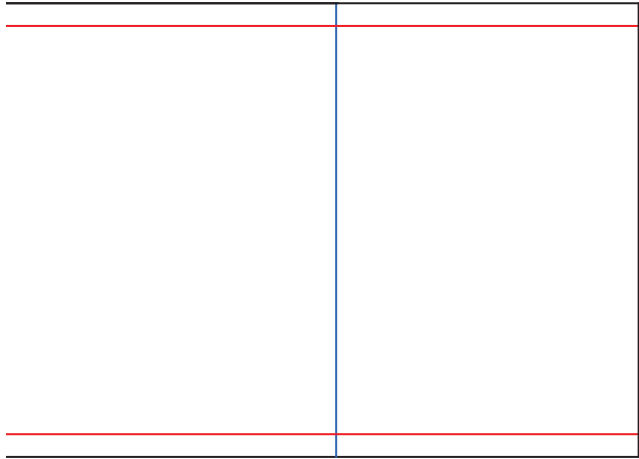
SERVO

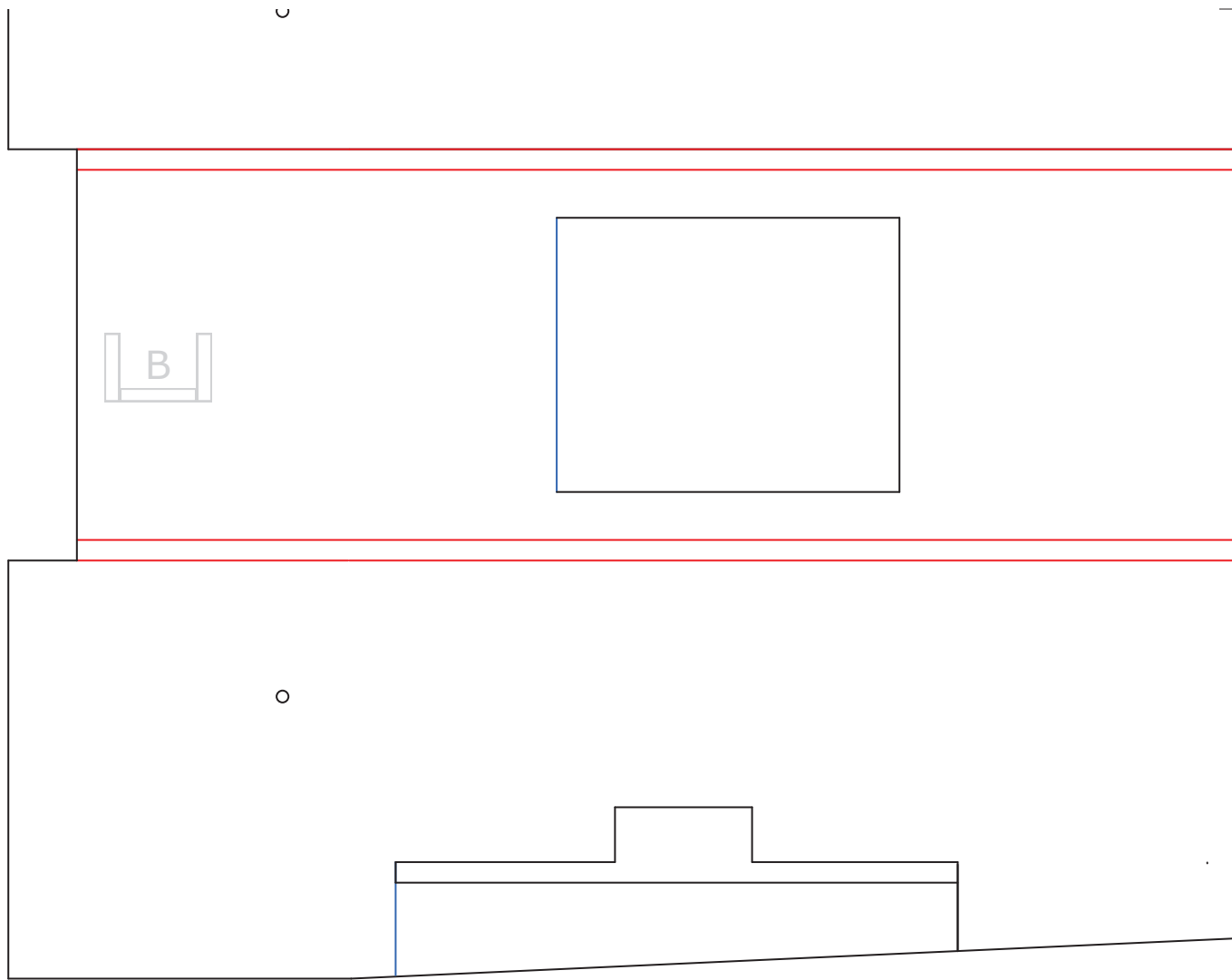


20 TAILBOOM (COVER STOPPER)

21 RIGHT TAILBOOM (LOWER COVER)



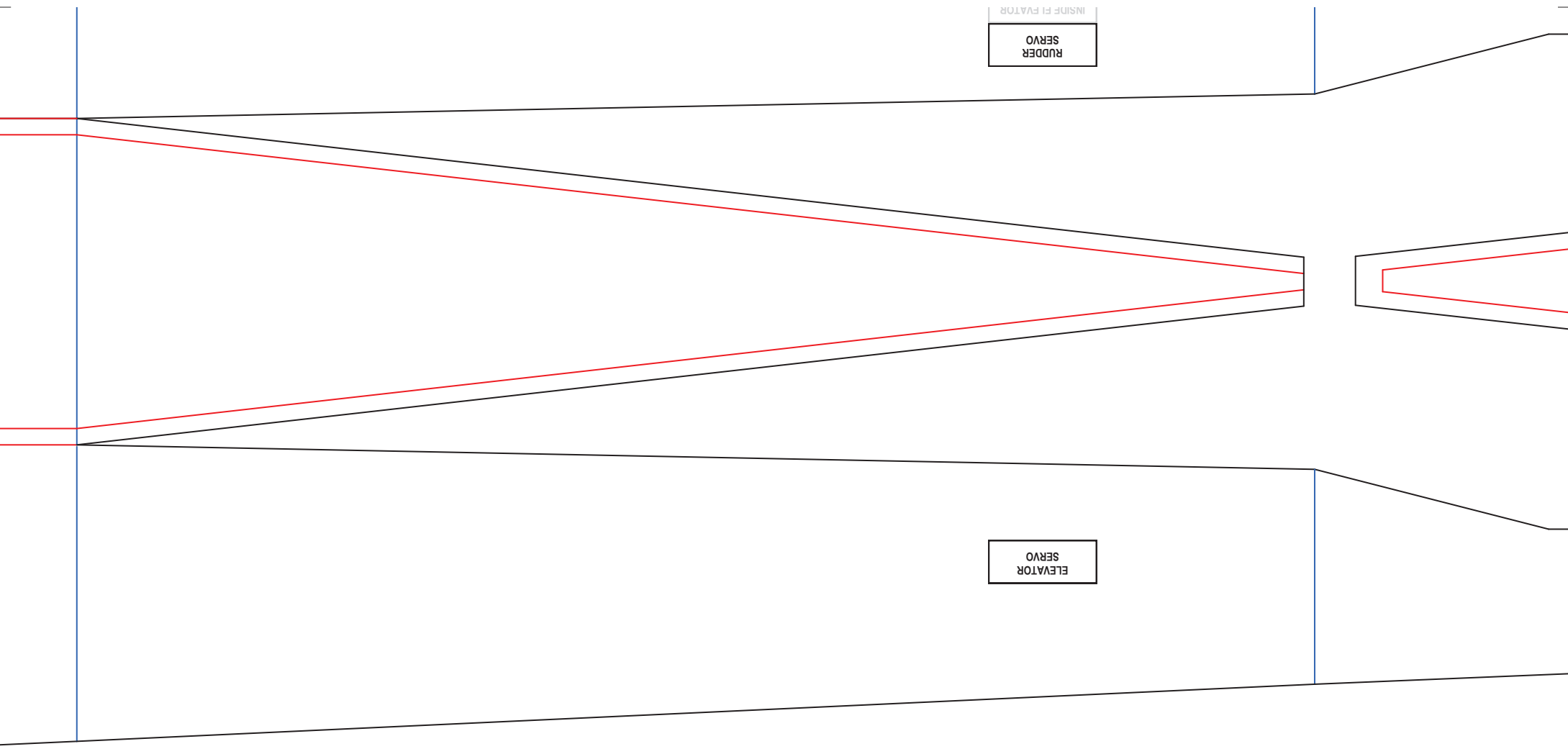




INSIDE ELEVATOR

RUDDER  
SERVO

ELEVATOR  
SERVO



23 TAILBOOM (COVER STOPPER)

24 LEFT TAILBOOM (LOWER COVER)

