



S

BUILD PL
CREATED

AircPirates - the sky is our ocean!

DESIGNED & DRAWING BY: TONY ROEHLING

LINE TYPE / COLOR:

—— CUT

—— SCORE CUT

- - - - BEVEL 45°

—— SCORE CUT & CREASE

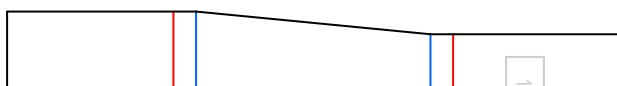


GLUE A MAGNET INTO THE FOAM

PART NUMBER

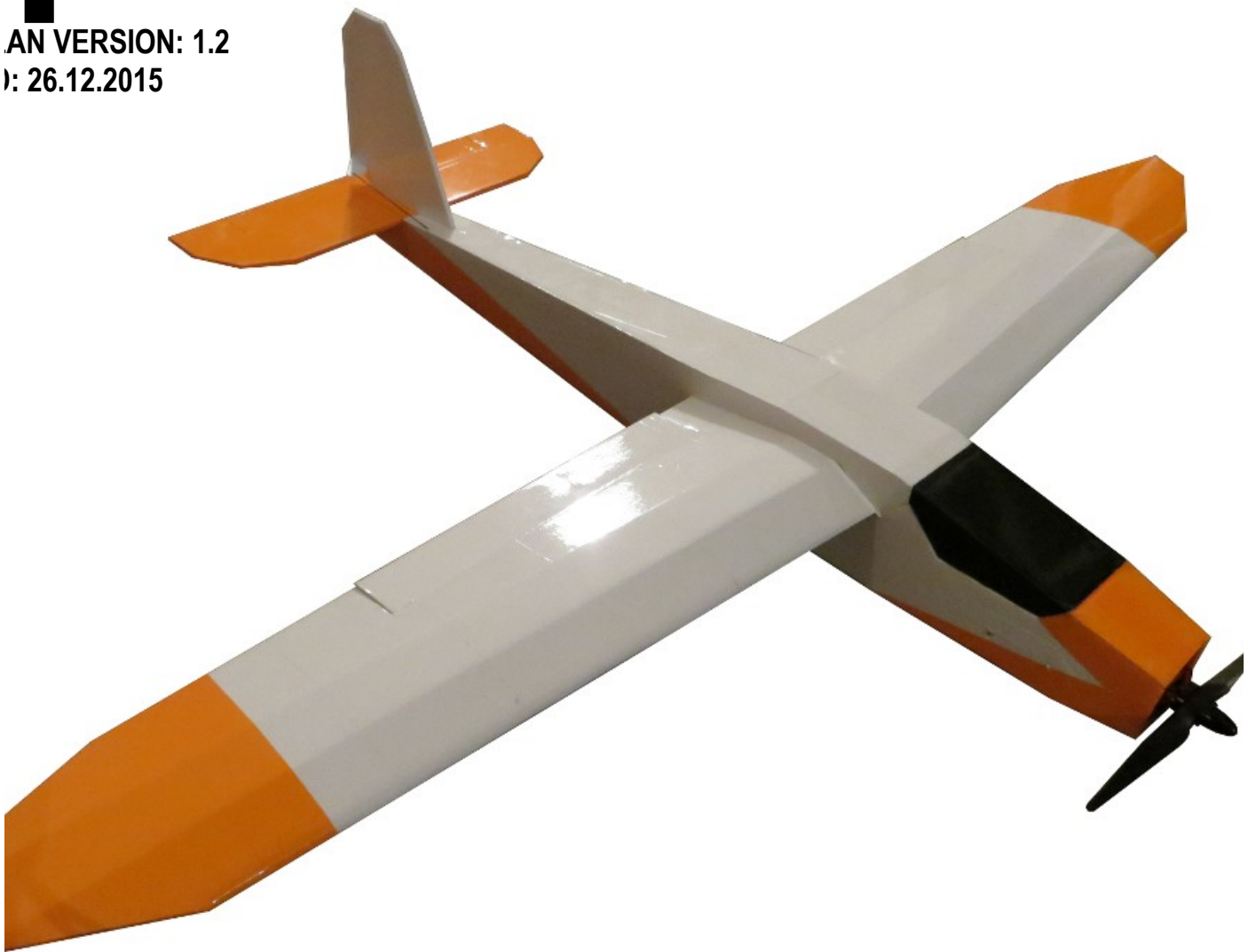


DESCRIPTION



perber Mini S

AN VERSION: 1.2
): 26.12.2015



Sport Glider

PRINT SEDCARD ON SELF ADHESIVE PAPER

RUDDER


Sperber Mini Sport Glider
- SEDCARD -

AIRCRAFT SPECIFICATIONS:
LENGTH: 575 mm | 22.64 in
WINGSPAN: 800 mm | 31.50 in
CG: 30 mm | 1.18 in

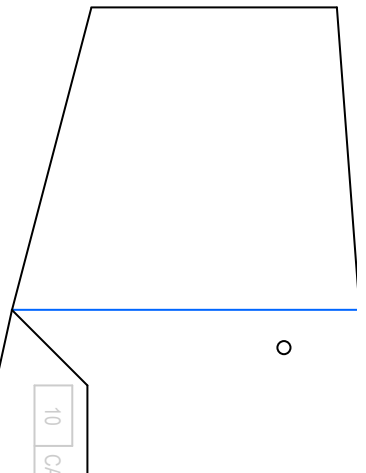
WEIGHT:
EMPTY 123 g | 4.34 oz (without packing tape)
W/O BATTERY 233 g | 8.22 oz (with packing tape)
TAKE-OFF 300 g | 10.58 oz (with 3S 950 mAh)

RECOMMENDED EQUIPMENT:
SERVO max. 4: 4.4 g (TGY-1440A)
MOTOR: DYS 1806, 2300 kv
ESC: 12 amp
PROP: 5 x 5 APC
BATTERY: 3S 950 mAh (nano-tech)

DEFLECTIONS **AILERON UP**

AILERON DOWN

ELEVATOR

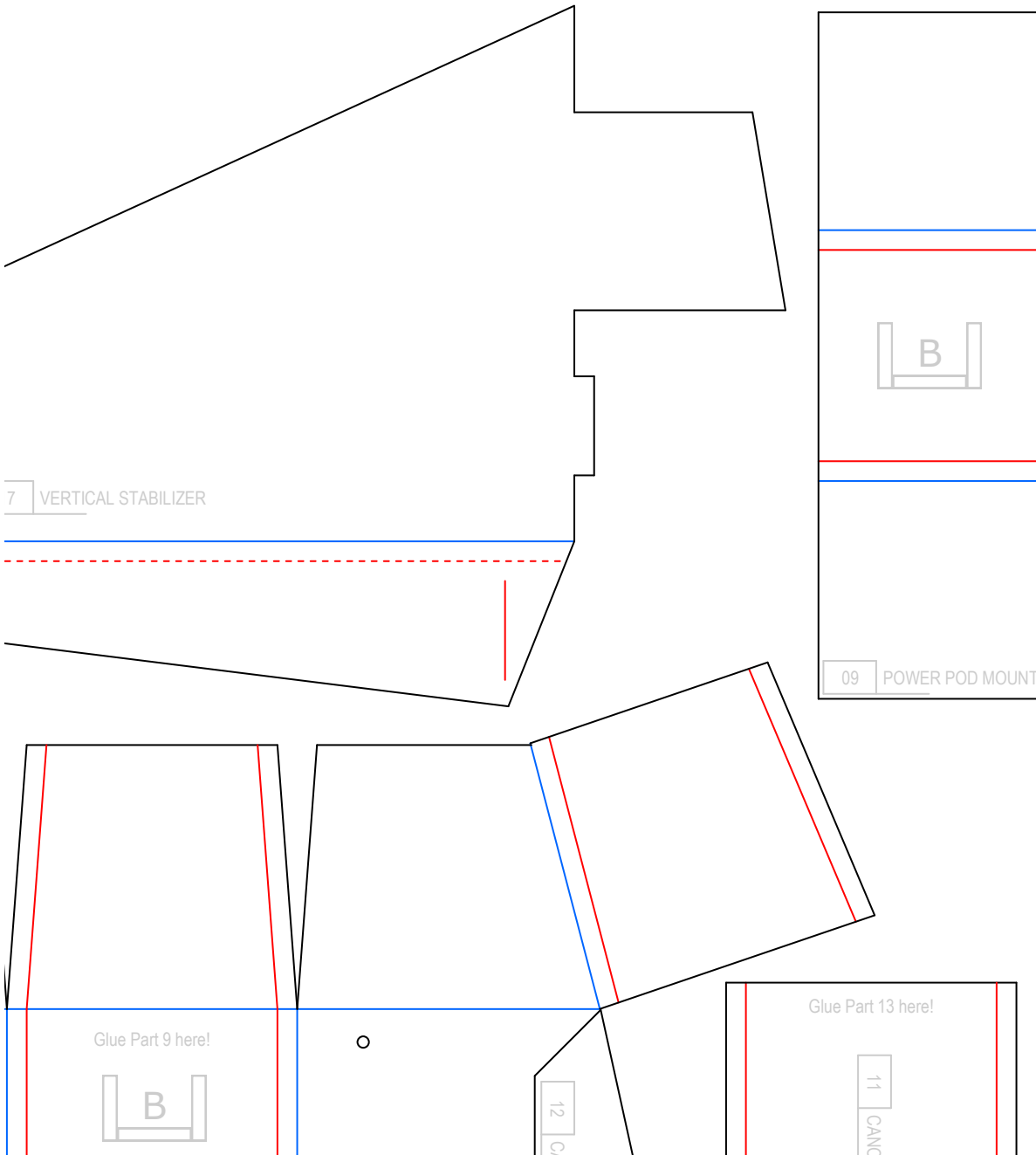


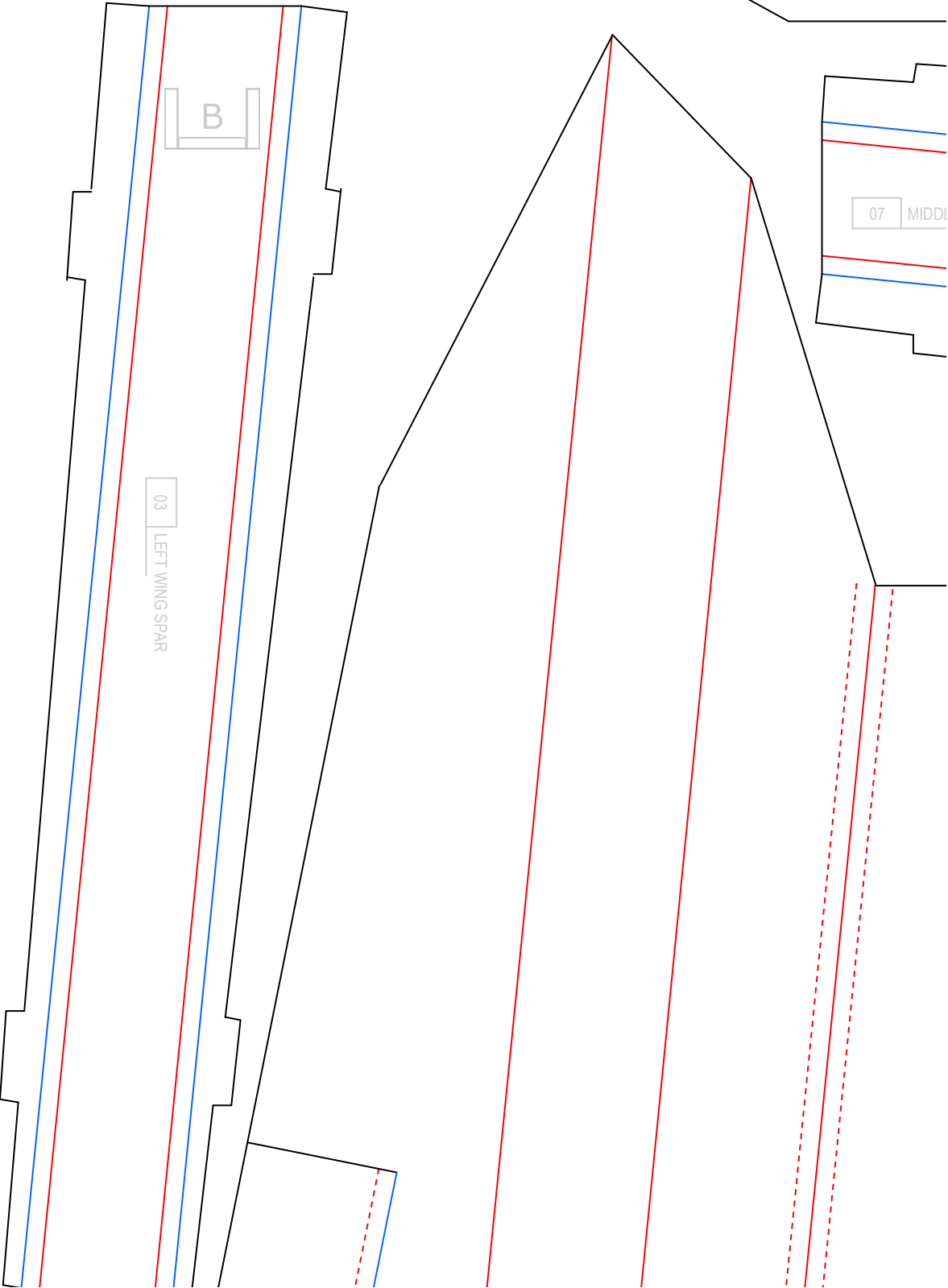
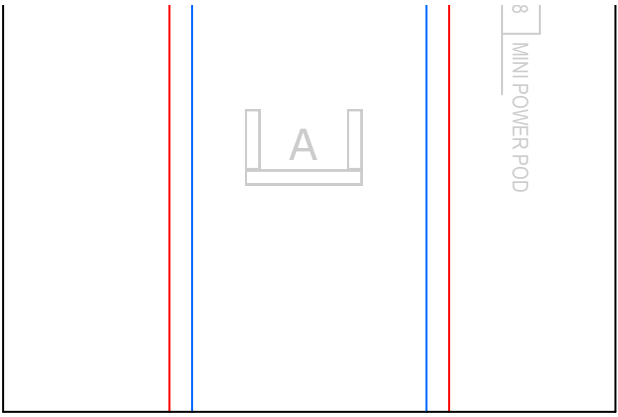
PLYWOOD

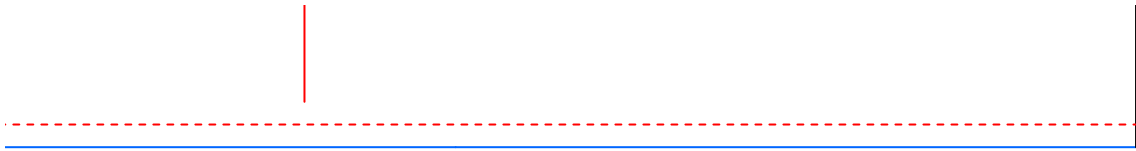
SMALL PLASTIC CARD



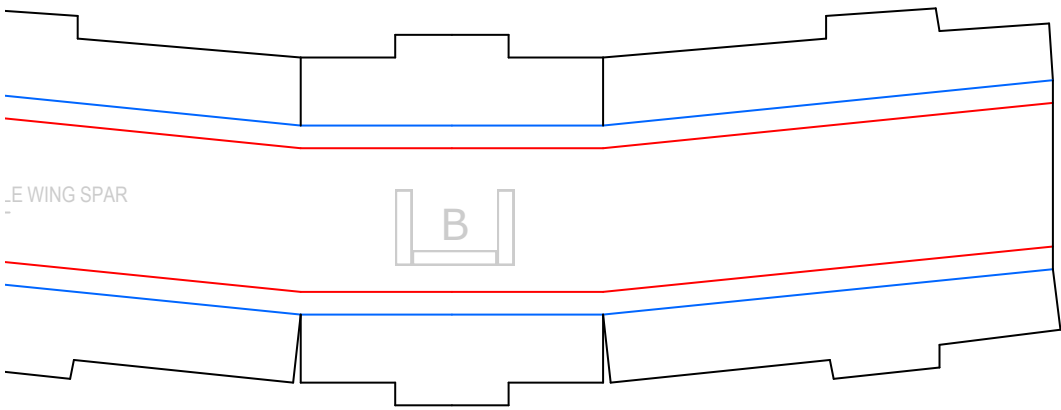
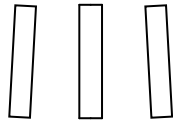
FOAM BOARD SHEET SIZE: 700 x 700 x 3 mm
SHEET 1 OF 1



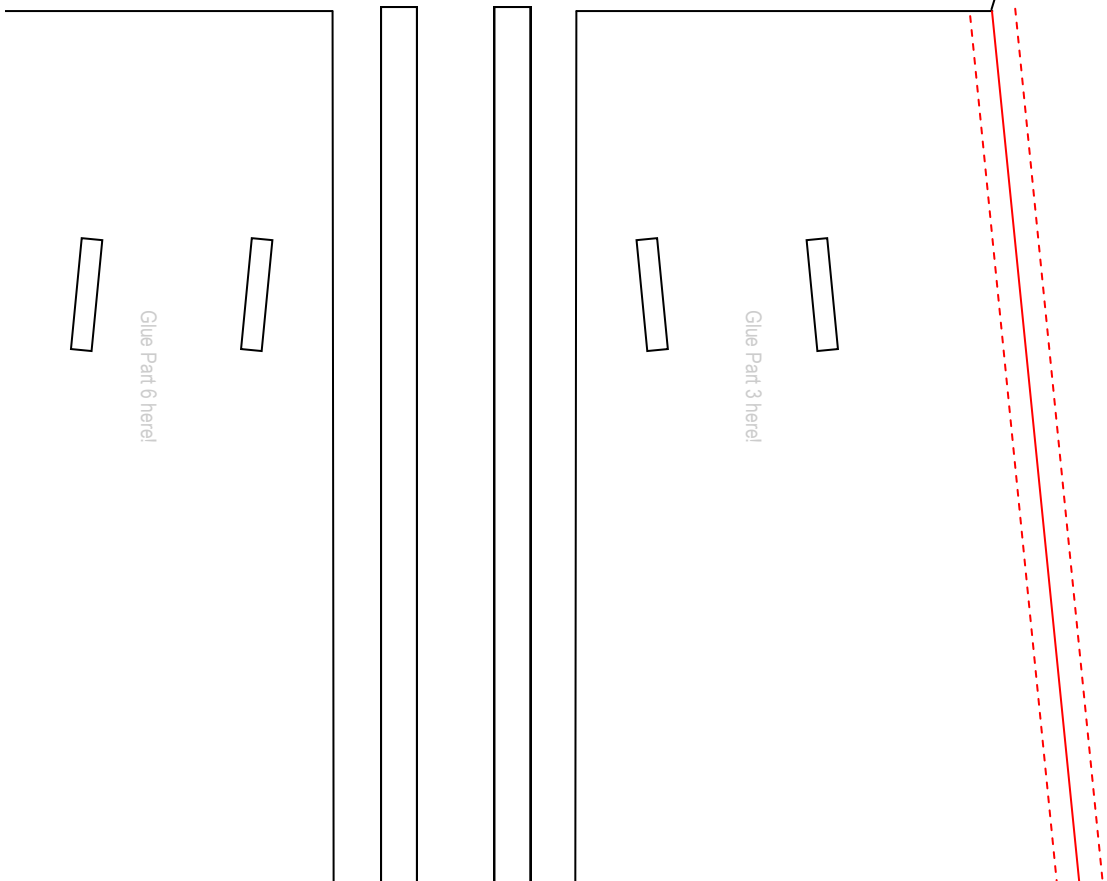




ILIZER

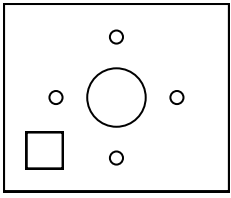


_E WING SPAR

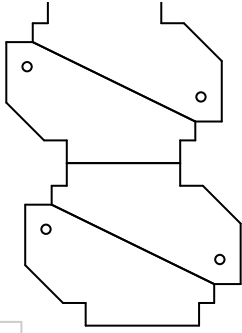


Glue Part 6 here!

Glue Part 3 here!



19 FIREWALL



20 CONTROL HORNS

NOPY (LEFT WINDOW)



B

06 RIGHT WING SPAR

Mount
Servo
here!

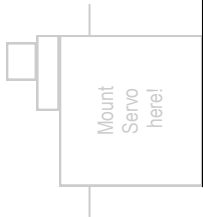
o

OPY (UPPER WINDOW)



Glue Part 14 here!

ANOPY (RIGHT WINDOW)



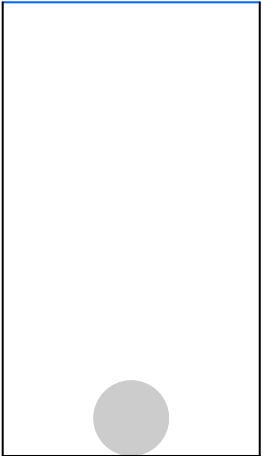
Mount
Servo
here!

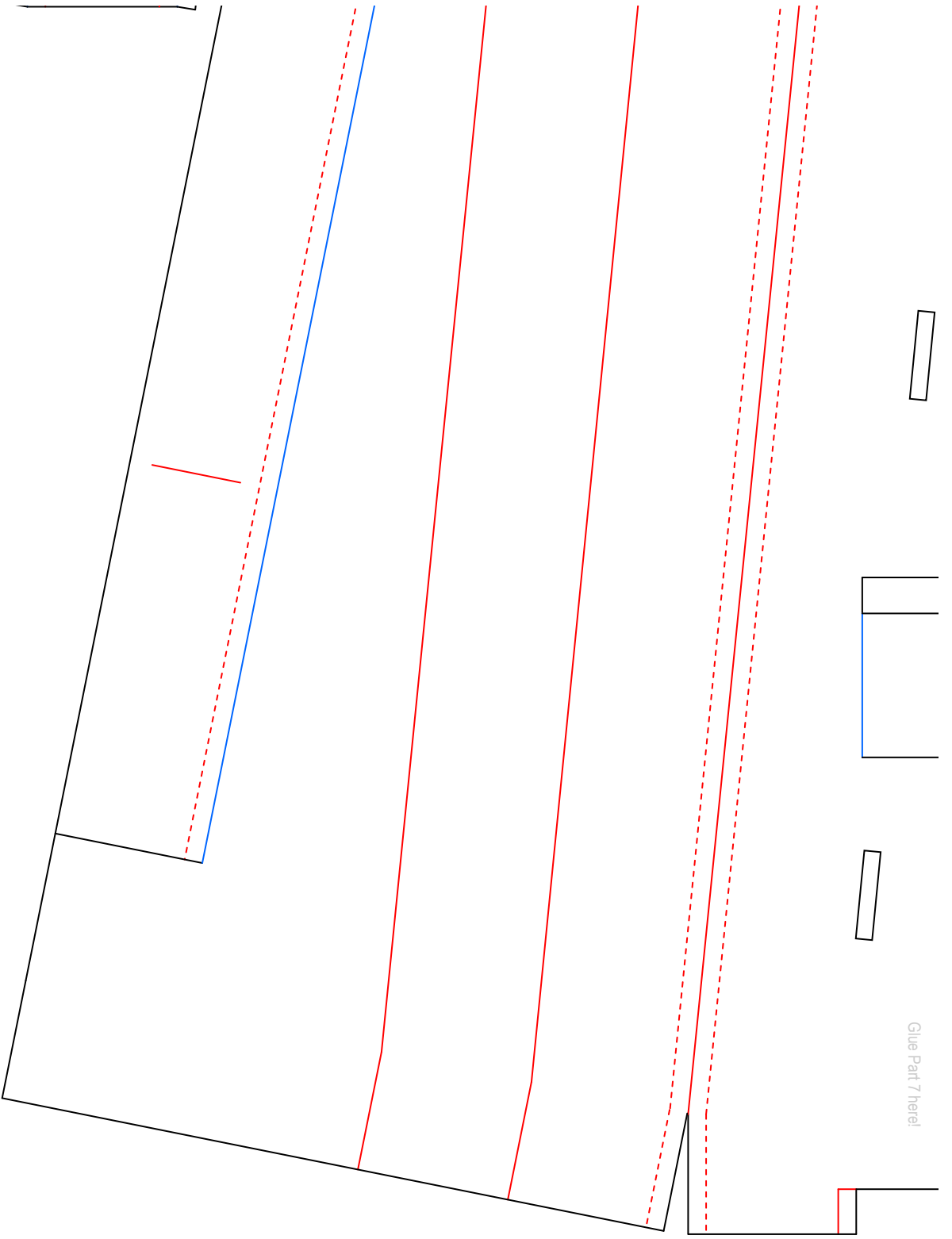
0

08 FUSELAGE



Glue Part 15 here!





Glue Part 7 here!

