



**BUILD  
CREAT**

# **AircPirates - the sky is our ocean!**

DESIGNED & DRAWING BY: TONY ROEHLING

## **LINE TYPE / COLOR:**

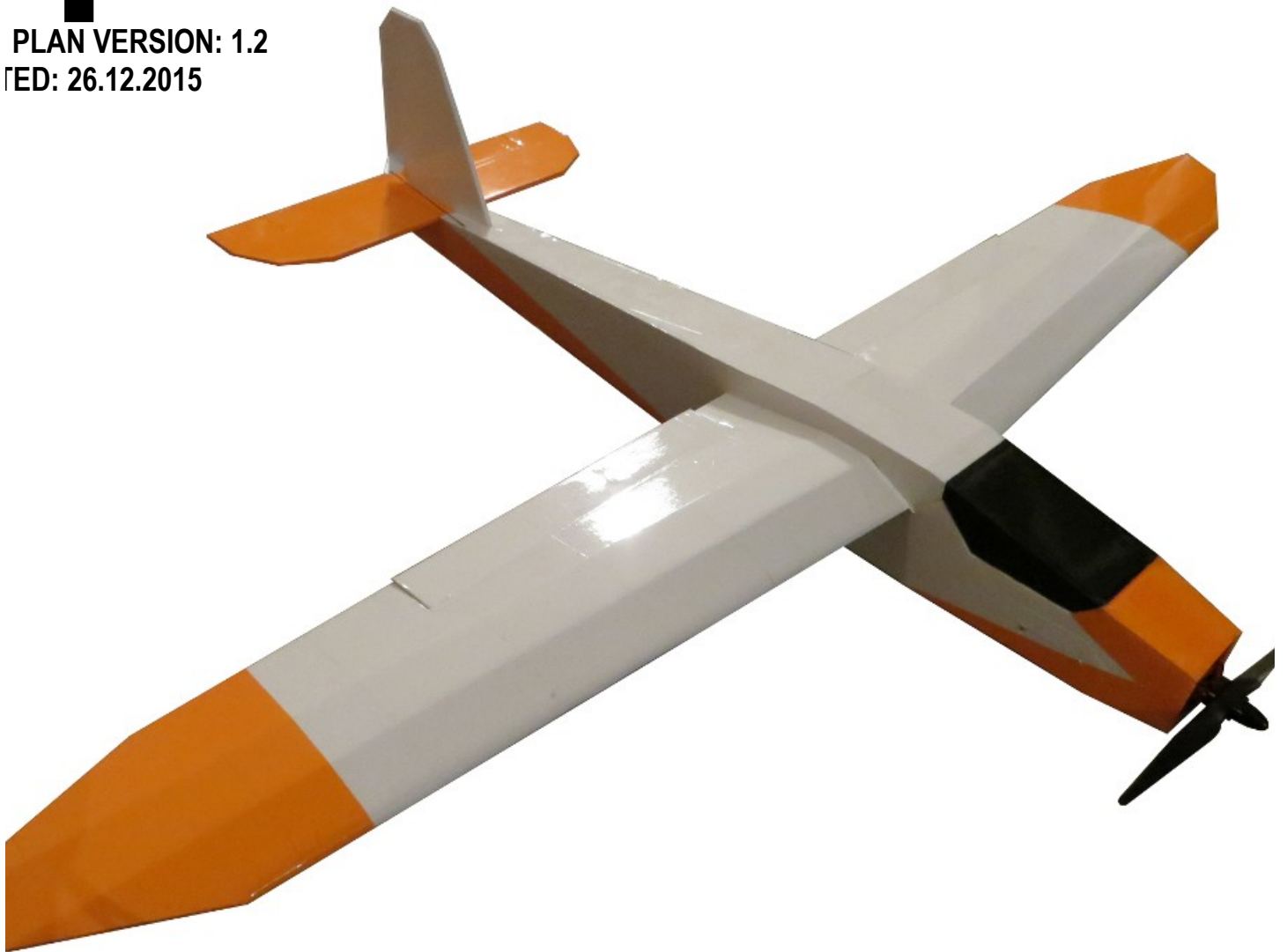
- CUT
- SCORE CUT
- - - BEVEL 45°
- SCORE CUT & CREASE
- GLUE A MAGNET INTO THE FOAM

## **PART NUMBER**



# Sperber Mini S

PLAN VERSION: 1.2  
ED: 26.12.2015



# Sport Glider

PRINT SEDCARD ON SELF ADHESIVE PAPER

**RUDDER**



**Sperber Mini Sport Glider**  
**- SEDCARD -**

AILERON DOWN



ELEVATOR

**AIRCRAFT SPECIFICATIONS:**  
 LENGTH: 575 mm | 22.64 in  
 WINGSPAN: 800 mm | 31.50 in  
 CG: 30 mm | 1.18 in

**WEIGHT:**  
 EMPTY 123 g | 4.34 oz (without packing tape)  
 W/O BATTERY 233 g | 8.22 oz (with packing tape)  
 TAKE-OFF 300 g | 10.58 oz (with 3S 950 mAh)

**RECOMMENDED EQUIPMENT:**  
 SERVO max. 4: 4.4 g (TGY-1440A)  
 MOTOR: DYS 1806, 2300 kv  
 ESC: 12 amp  
 PROP: 5 x 5 APC  
 BATTERY: 3S 950 mAh (nano-tech)

**DEFLECTIONS** **AILERON UP**

17

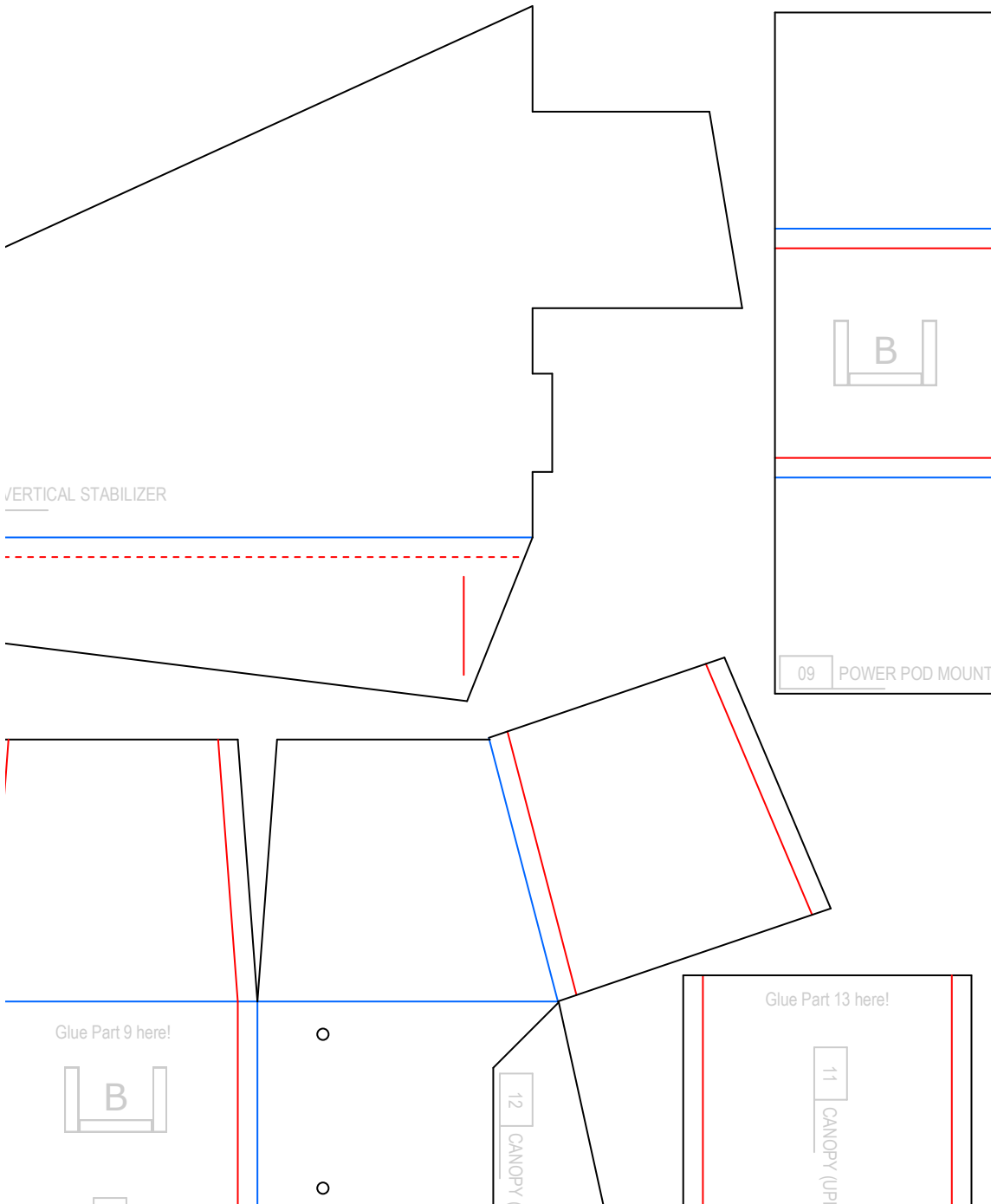
PLYWOOD

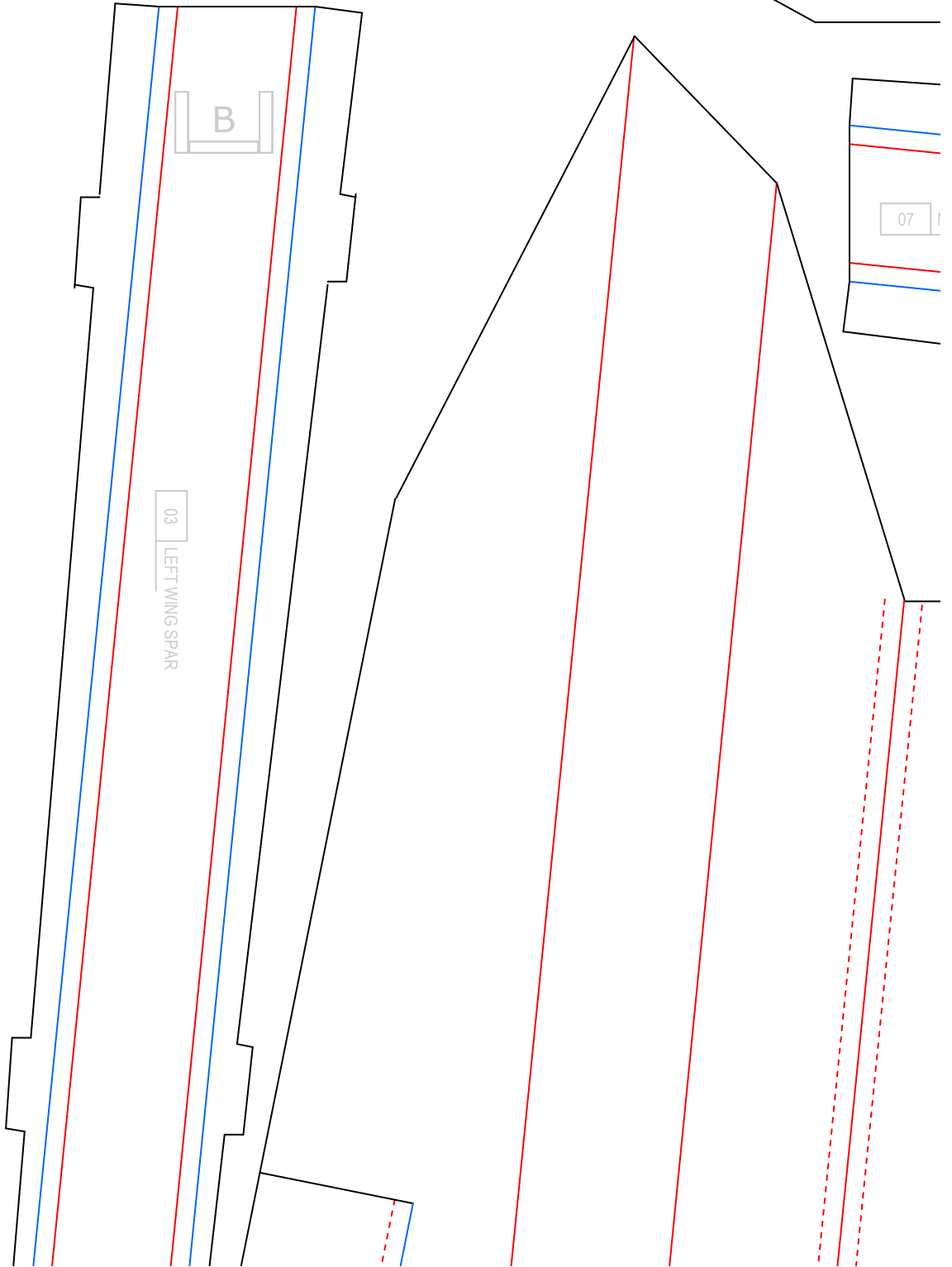
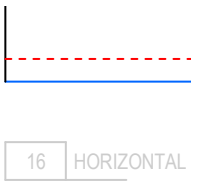
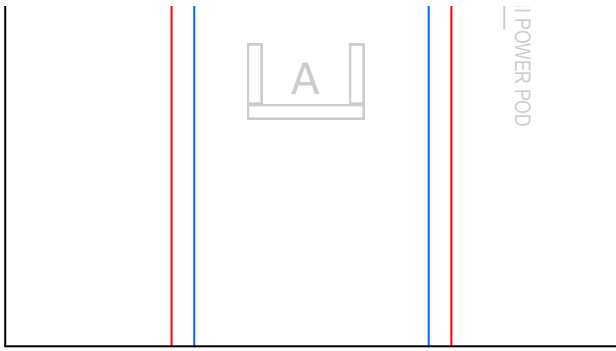
SMALL PLASTIC CARD

10 CANOPY (L)

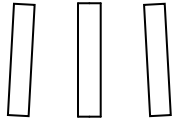


FOAM BOARD SHEET SIZE: 700 x 700 x 3 mm  
SHEET 1 OF 1





STABILIZER



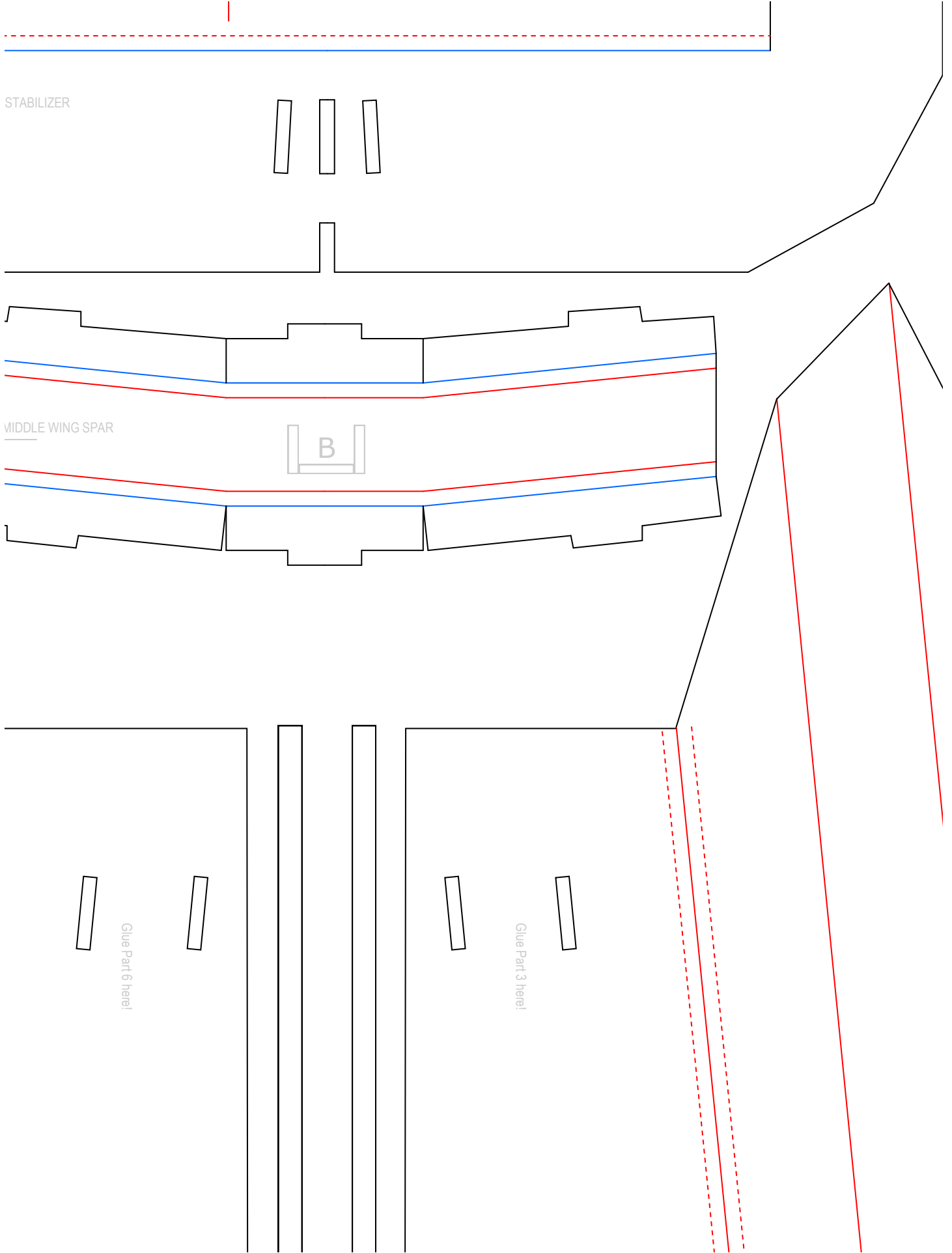
MIDDLE WING SPAR

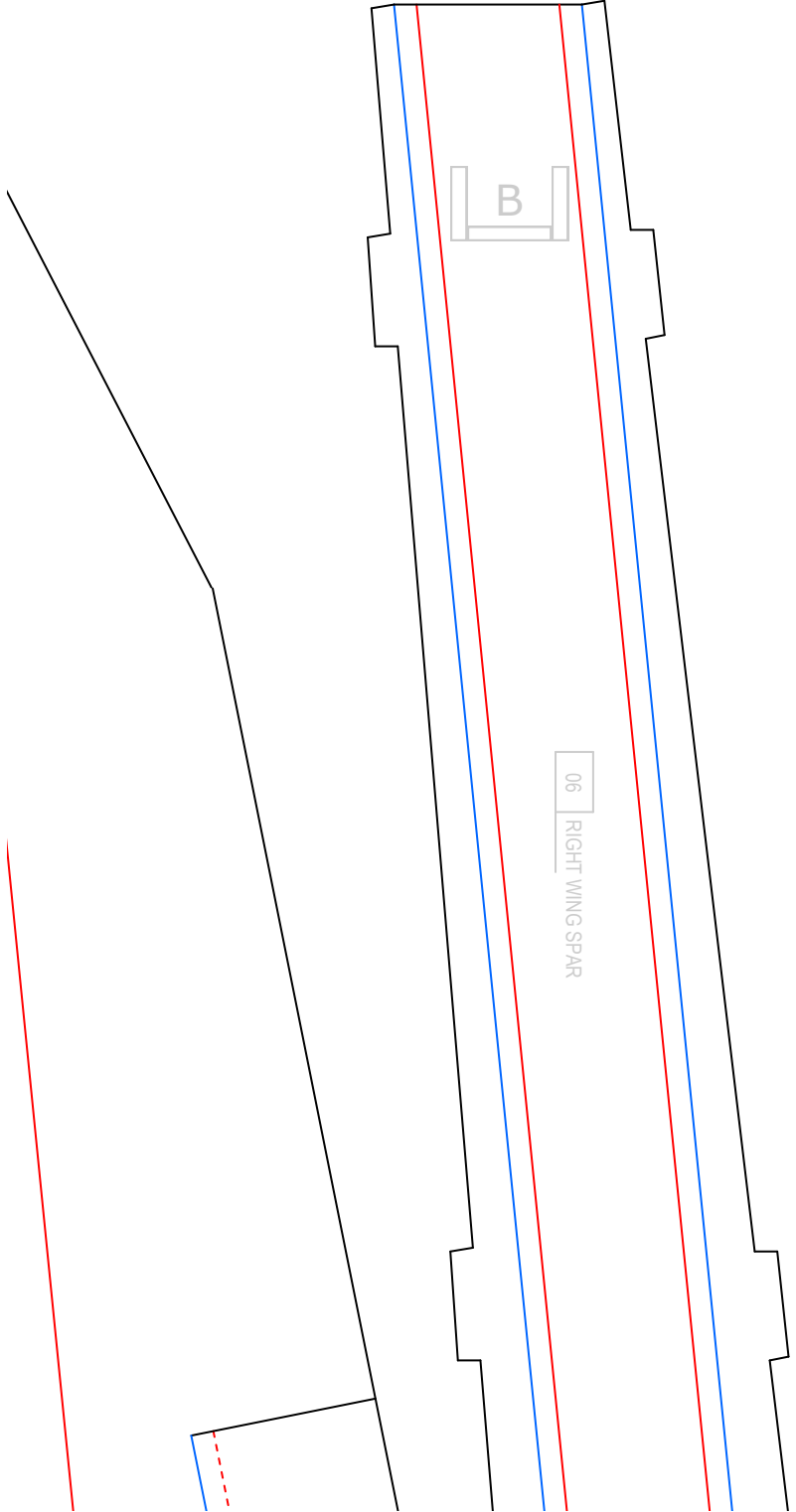
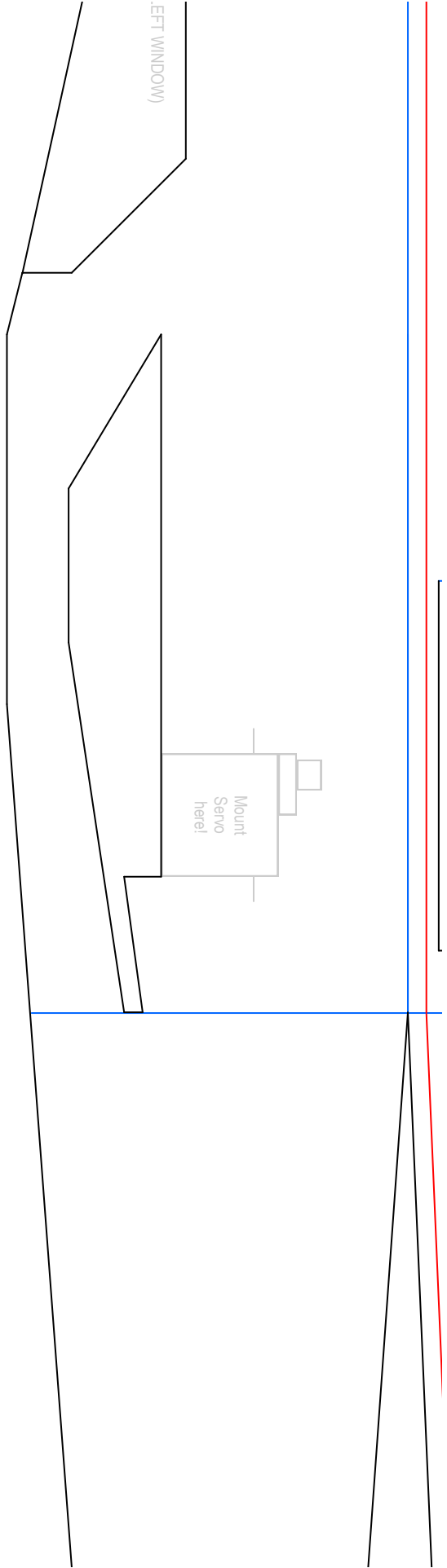
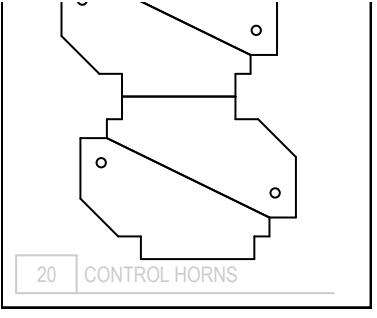
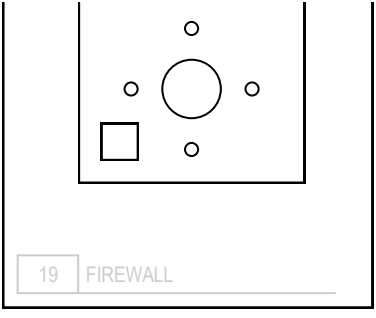


Glue Part 6 here!



Glue Part 3 here!



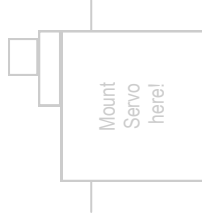


(PER WINDOW)



Glue Part 14 here!

(RIGHT WINDOW)



Mount Servo here!

Glue Part 15 here!





